



# Improved transport services and Electric Vehicle Charging Stations in the Republic of Serbia

**Jovana Đurović**  
**Head of Department for Strategic Planning,  
Studies and Development**

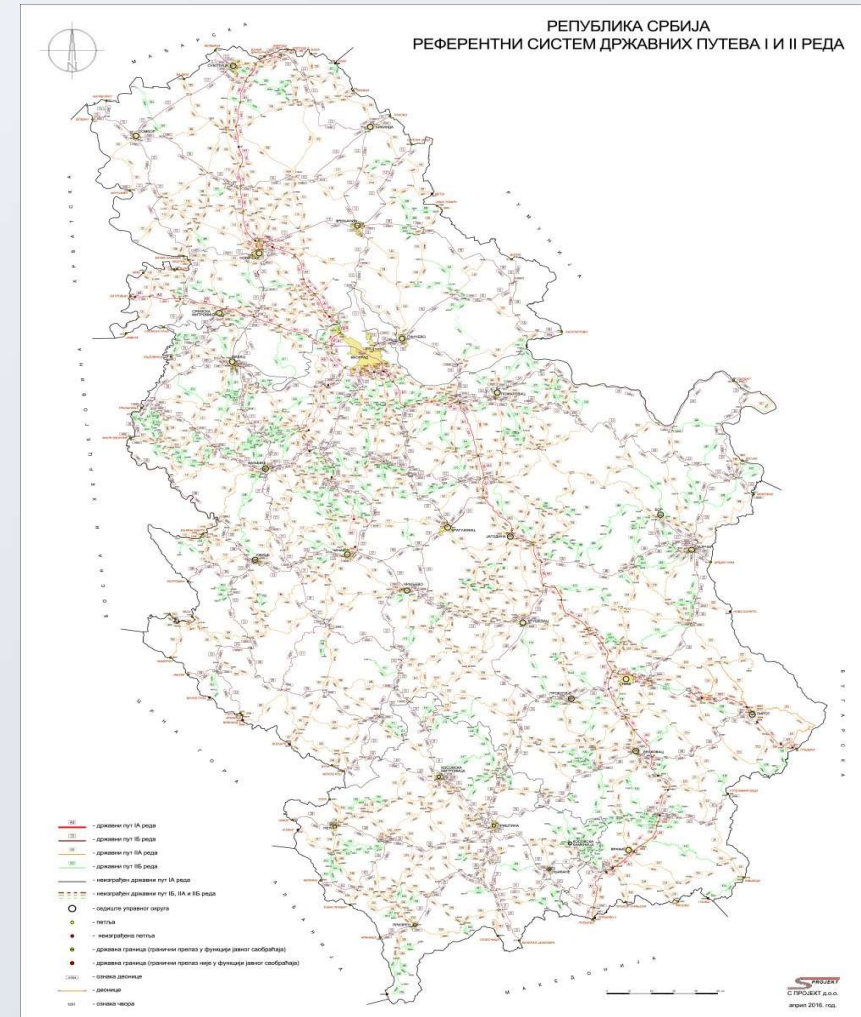
*Sector for strategy, designing and development*

# About PE "Roads of Serbia"

PE "Roads of Serbia" performs professional activities referring to maintenance and preservation, exploitation, construction, reconstruction, organization and control of toll collection, development and management of I and II category state roads in the Republic of Serbia.

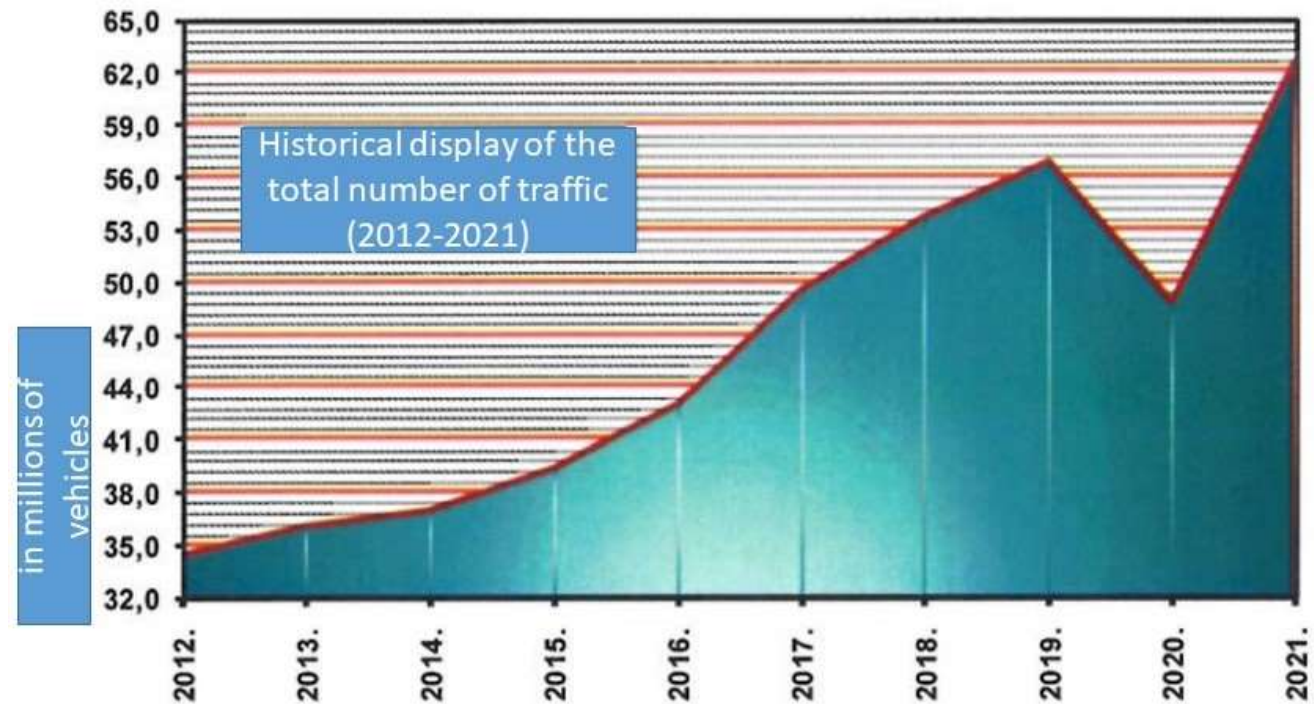
Road network in the Republic of Serbia is 16.380,954 km:

- I A category state roads (motorways) – 937,309 km
- I B category state roads – 4.486,928 km
- II A category state roads – 7.799,768 km
- II B category state roads – 3.156,949 km



# Traffic growth

- Each year, a smaller or larger trend of traffic growth on state roads was recorded.
- Compared to 2012 (about 34.4 million vehicles) the number of vehicles in 2021 is higher by **81.12%** (62.4 million vehicles).
- The highest traffic growth trend was recorded between 2021-2020 with 28%.
- The only decrease in traffic was recorded in 2019-2020 when the annual trend was 14.22%





# Current projects

In order to improve quality of transport service implementation of **12 projects** is underway with a total length of **447.7 km**, of which **244.3 km** are motorways:

- Sremska Rača – Kuzmin (motorways) - 18 km
- Bypass around Belgrade (sector B) motorways - 20.4 km
- Novi Beograd – Surčin (continuation of M.Veliki motorways) - 7.9 km
- Preljina – Požega (motorways) – 31 km
- Iverak – Lajkovac (expressway) – 18.3 km
- Bypass around Gornji Milanovac – 9.4 km
- Bypass around Užice – 5 km
- Novi Sad - Ruma (Fruškogorski Corridor) expressway - 47.7 km
- Ruma – Šabac – Loznica (motorways-22km/expressway-55km) – 77 km
- Pojate - Preljina (Moravian Corridor) motorways - 112 km
- Požarevac – Golubac (expressway) – 68 km
- Niš - Pločnik - Merdare (motorways) - 33 km



# Current projects

The design of **12 roads** with a total length of **1.076 km** is underway, of which **363 km** are motorways:

- Sombor – Kikinda (expressway) - 175 km
- Požega - Boljare (motorway) - 107 km
- Slepčević – Badovinci (expressway) – 15 km
- Paraćin – Zaječar – Negotin (expressway) – 140 km
- Kraljevo - Novi Pazar (expressway) - 90 km
- Ostružnica – Obrenovac (expressway) – 14 km
- Kragujevac - Mrčajevci (expressway) – 37 km
- Požega - Uzice - Kotorman (motorway) - 60 km
- Northern bypass around Kragujevac – 22 km
- Bypass around Požega
- Belgrade - Vršac (motorway) - 86 km
- Belgrade – Zrenjanin – Novi Sad (highway) – 110 km
- Vožd Karađorđe (expressway) – 220 km





# Electric vehicle subsidies

- The Republic of Serbia has adopted a Regulation for subsidizing the purchase of electric and hybrid vehicles.
- The amount of subsidies depends on the type of vehicle and the amounts range 250 – 5,000 euros.
- The right to subsidized purchase of vehicles belongs to legal persons, entrepreneurs and natural persons, except for taxi drivers who already received subsidies for the purchase of new taxi vehicles.
- PE "Roads of Serbia" launched an initiative to reduce toll prices for electric and other clean vehicles that use electronic toll collection system.



# Electric Chargers

The PE „Roads of Serbia“ has installed 8 chargers for electric cars at key points on major motorways

Electric chargers providing power at 22-50kW are located as follows:

- on plateau of toll station „Preševo“ (from direction of BC with Macedonia towards Niš),
- on plateau of toll station „Šid“ (from direction of BC with Croatia towards Belgrade),
- on plateau of toll station „Dimitrovgrad“ (from direction of BC with Bulgaria towards Niš),
- on plateau of toll station „Subotica“ (from direction of BC with Hungary towards Belgrade),
- in the rest area „Boljkovci“, on the motorway Miloš Veliki (direction Belgrade-Čačak), near toll station „Ljig“



# Electric Chargers

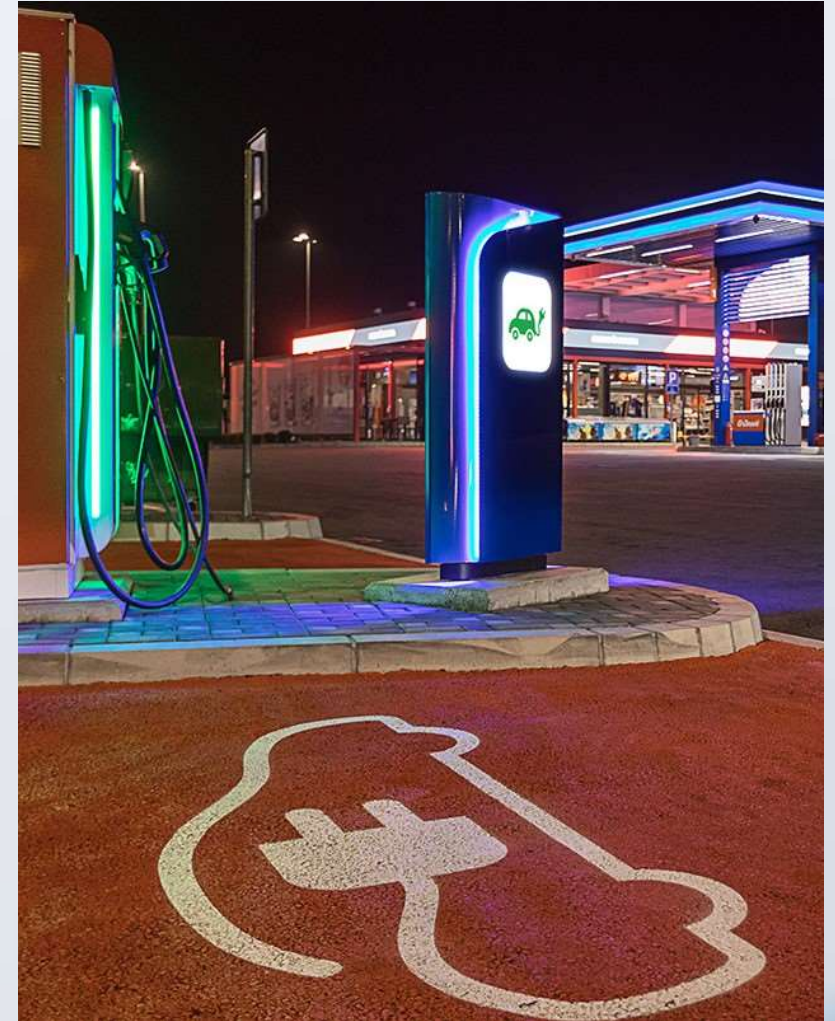
These chargers are provided with three connectors – two for fast DC charging (max output power of 50 kW) and one for fast AC charging (22kW).

Also three rapid electric chargers of a maximum output power of 175 kW are functional on major roadways:

- on plateau of former toll station „Niš“ (direction Belgrade -Niš)
- on plateau of former toll station „Niš“ (direction Niš-Belgrade)
- on plateau of toll station „Beograd“ (direction Niš-Belgrade)

At the moment, PE "Roads of Serbia" is implementing 10 new chargers for electric vehicles.

The service of electric vehicles charging is currently free.





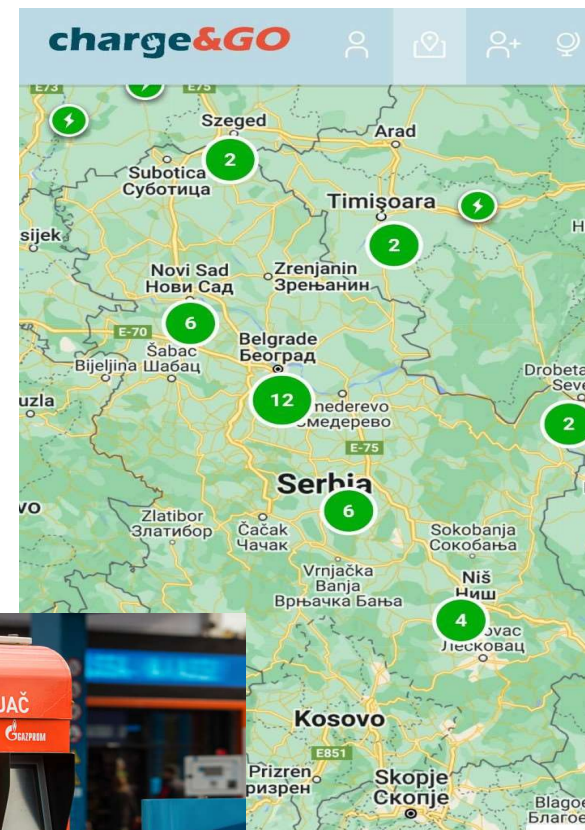
# Electric Chargers

Three new rapid chargers are connected to the platform Charge&Go

Through the application platform enables:

- supervision and management of chargers system,
- online insight for users of application on chargers occupancy,
- possibility of reservation and charging fees

All installed electric charges are visible on the leading worldwide applications: Plug&Share, Virta, and on Google Maps.



# Open Balkan Initiative

Within the framework of the initiative "Open Balkan" PE "Roads of Serbia" is negotiating the connection of the electronic toll collection system (ENP) with the countries of the Western Balkans.

Road users will be able to pay tolls without having to stop or purchase any additional device or cards in countries where their vehicle is not registered.

It is a question of the day when citizens will be able to use one TAG, between Serbia, Bosnia and Herzegovina, North Macedonia and Albania.

This will:

- increase traffic safety
- reduce congestion on highways
- ease the flow of vehicles at toll booths
- citizens will be able to reach their desired destination faster





# Border crossing

The expansion of border crossings and their maintenance will:

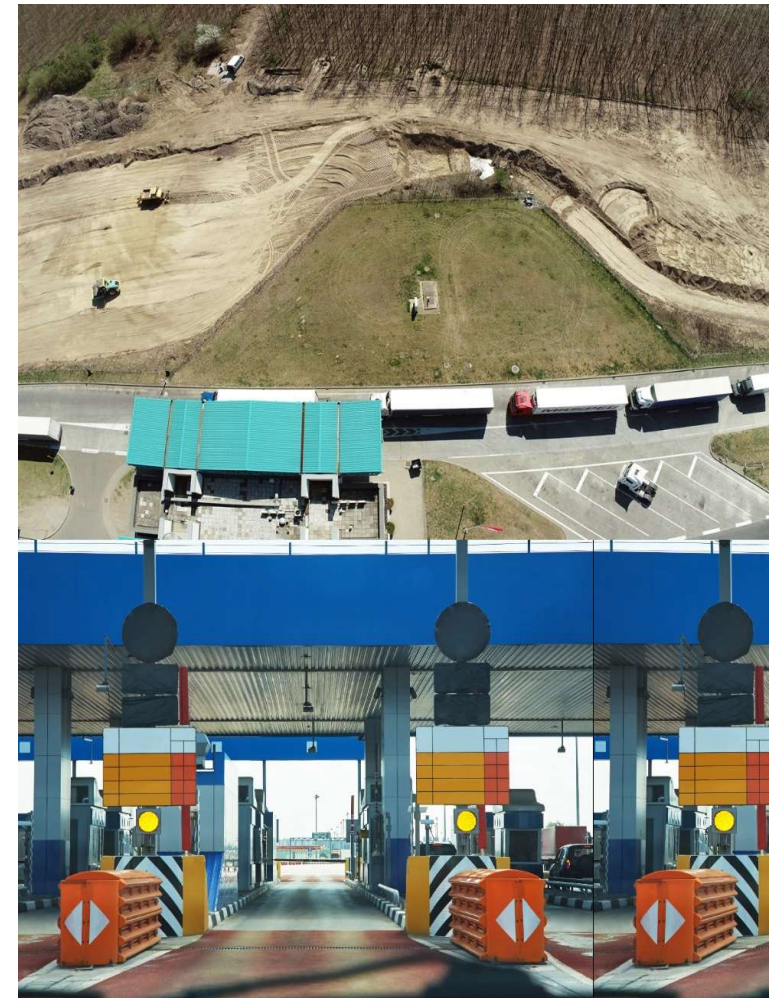
- reduce congestion at the border and gas emissions
- relieve existing border crossings
- improve the mobility and quality of transport and enable circulation of all types of goods
- support economic activities

Ongoing projects on the expansion of border crossings:

**Horgoš border crossing** - extremely important as it is part of the European corridor 10 and one of the key points of transit traffic through our country

**Development of the border crossing Santovo - Bački Breg** - expansion of this border crossing for all types of cargo traffic

**Border crossing Rabe** – new border crossing strengthen the economies of border settlements at the three-border point of Hungary, Serbia and Romania.



# Bicycling

Draft of the **Strategy for the Development of Cycling in the Republic of Serbia 2022-2026** was prepared. It defines a detailed plan of activities for the purpose of improving and promoting cycling as an environmentally desirable mode of transport and improving cycle tourism.

So far, a total of **184 km** of bicycle paths along state roads have been built on the territory of the Republic of Serbia.

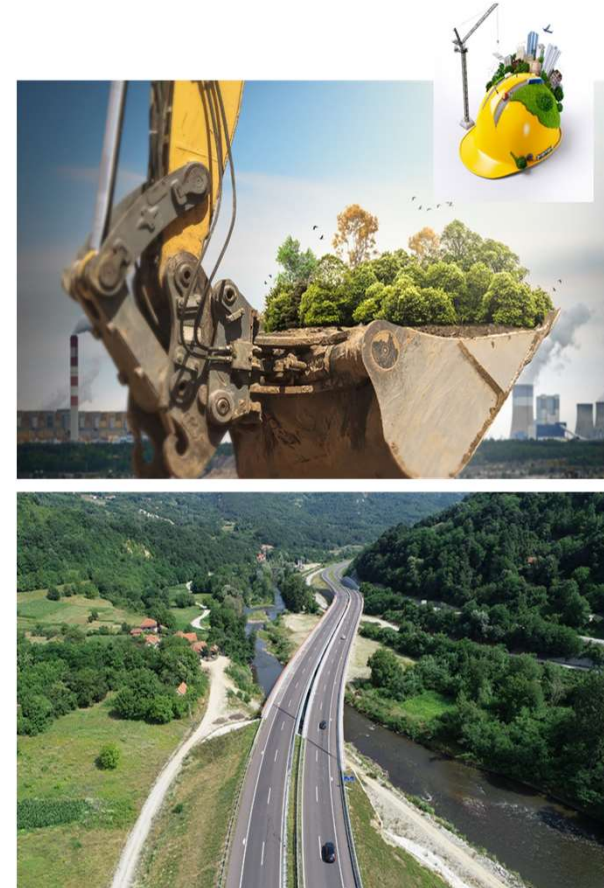
PE "Roads of Serbia" was the leading partner on the construction of the Kikinda - Nakovo bicycle path with a length of 8,21 km (which was financed by Interreg-IPA Romania-Republic of Serbia).





# Conclusions

- All investments are in compliance with the strategic orientation of the Republic of Serbia for the sector of road transport to become functionally integrated into the European road network.
- PE Roads of Serbia is contributing to the improvement and development of cycling infrastructure, traffic signals, encouraging cycle tourism content and thus promoting cycling as a healthy way of movement.
- The objective of environmental protection in state roads sector is the realization of infrastructure that is adapted to natural and cultural surroundings in such a way that the natural resources are preserved and the traffic impact has acceptable influence on people's health and well-being.
- At the same time, the accent is on more efficient linking of the Republic of Serbia with the neighbouring countries and increase of traffic flows by eliminating bottlenecks in the border zones.
- Traffic and economic valorization of geographic, international and traffic position of the Republic of Serbia in the surroundings is achieved with active participation in integrating processes of the Western Balkan region, South East Europe and the Danube region.





Thank you for your attention

Together on the same  
road, on the way to  
business excellence.