



RESEARCH CENTER OF
TRANSPORT PLANNING AND
TRAFFIC ENGINEERING



LIR
evolution

fin
project
fund raising & profit



DSPF
danube strategic project fund



City of  V

Part-financed by the European Union and

initCOSEERail



What future for passenger transport in the SEERAIL

Ljubljana, 04. – 05.12.2018

Content of research

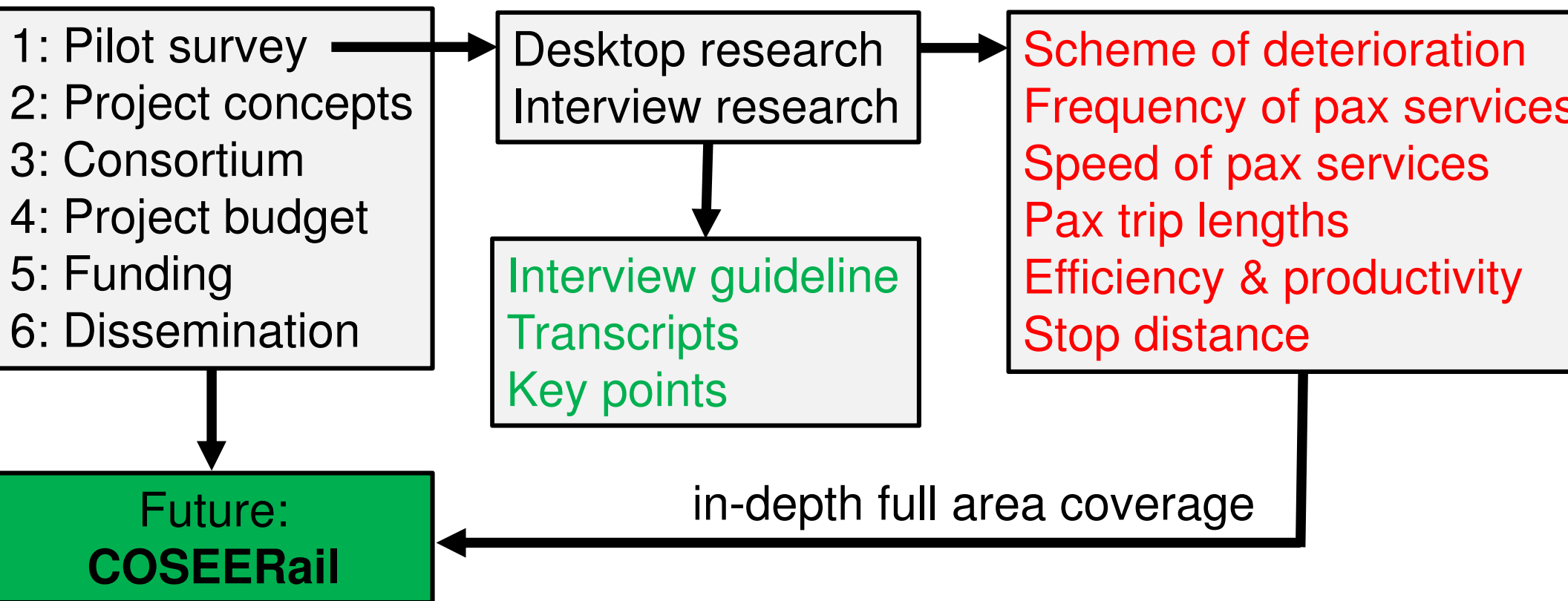
Interview Research

- Interview guideline*
- Transcripts*
- Key points*

Desktop Research

- Statistics/KPI*
- Timetable Research*
- Ongoing projects*

initCOSEERail ... Initial Research and Design for COSEERail¹⁾



1) COSEERail: Challenges in improved Organization in South-Eastern European RAILways

Interview results

Potentials for improvement

LOGISTICS
FOR MASS GOODS

REGULATIONS FOR
COMPETITION

INTEGRATED
TRANSPORT

INFRASTRUCTURE
DEVELOPMENT

HUMAN RESOURCES
MANAGEMENT

“If you ask me, a strong railway in the political sense would mean strong state. Currently, that's not easy to achieve, but we should strive towards achieving it.” (Croatia, Infrastructure operator, HŽ Infrastructure LLC)

Desktop Research – Statistics / KPIs

1985 – 2015

Length of the railway

Length of the lines classified by max. speed

Railway crossing

Stations, signal points, etc

Rolling materials

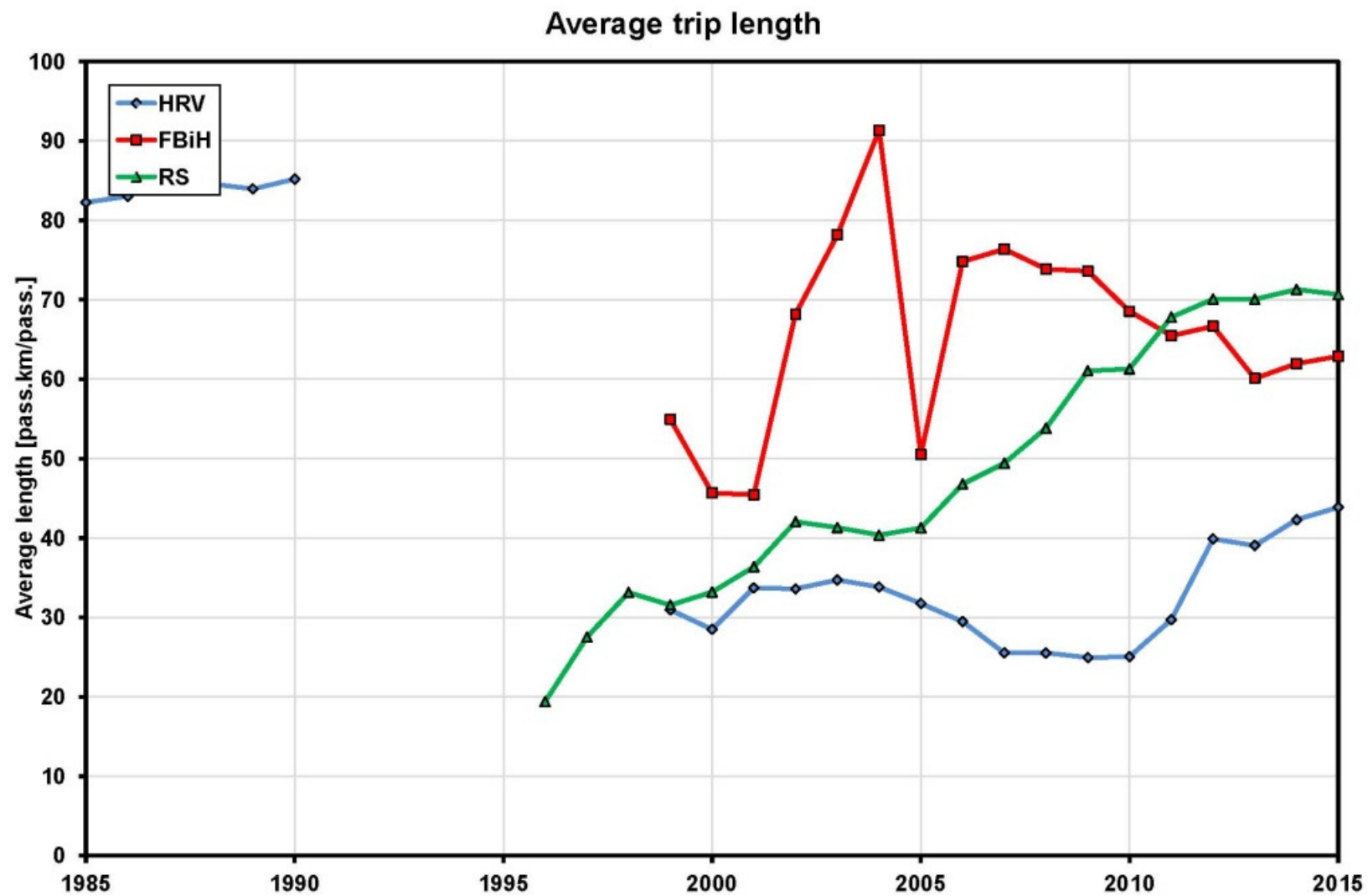
Number of employees: using the same age cohorts as in the statistics

Passenger

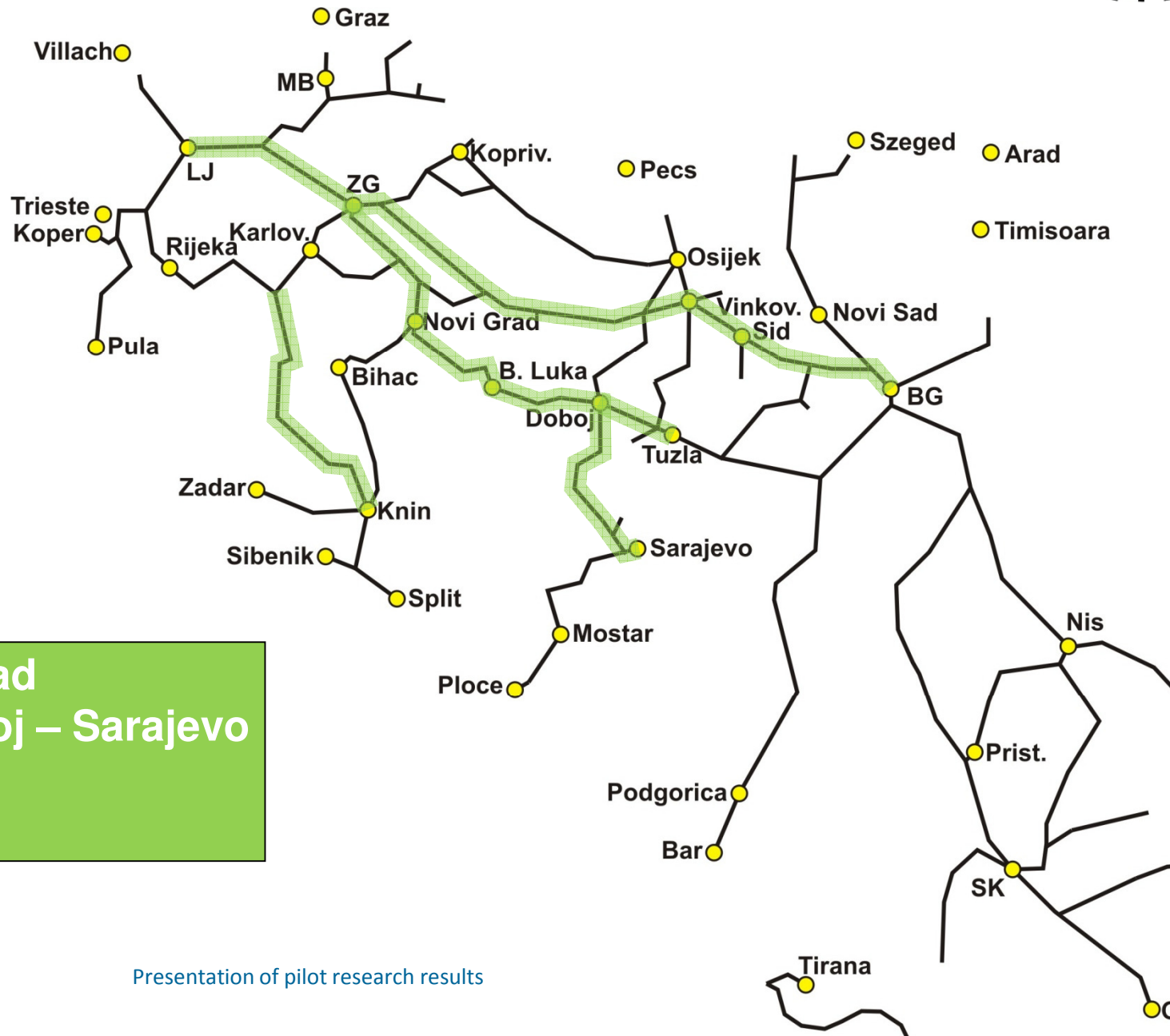
Weight

Average commercial speed

KPIs calculated and compared



Schematic map: 4 lines under scrutiny

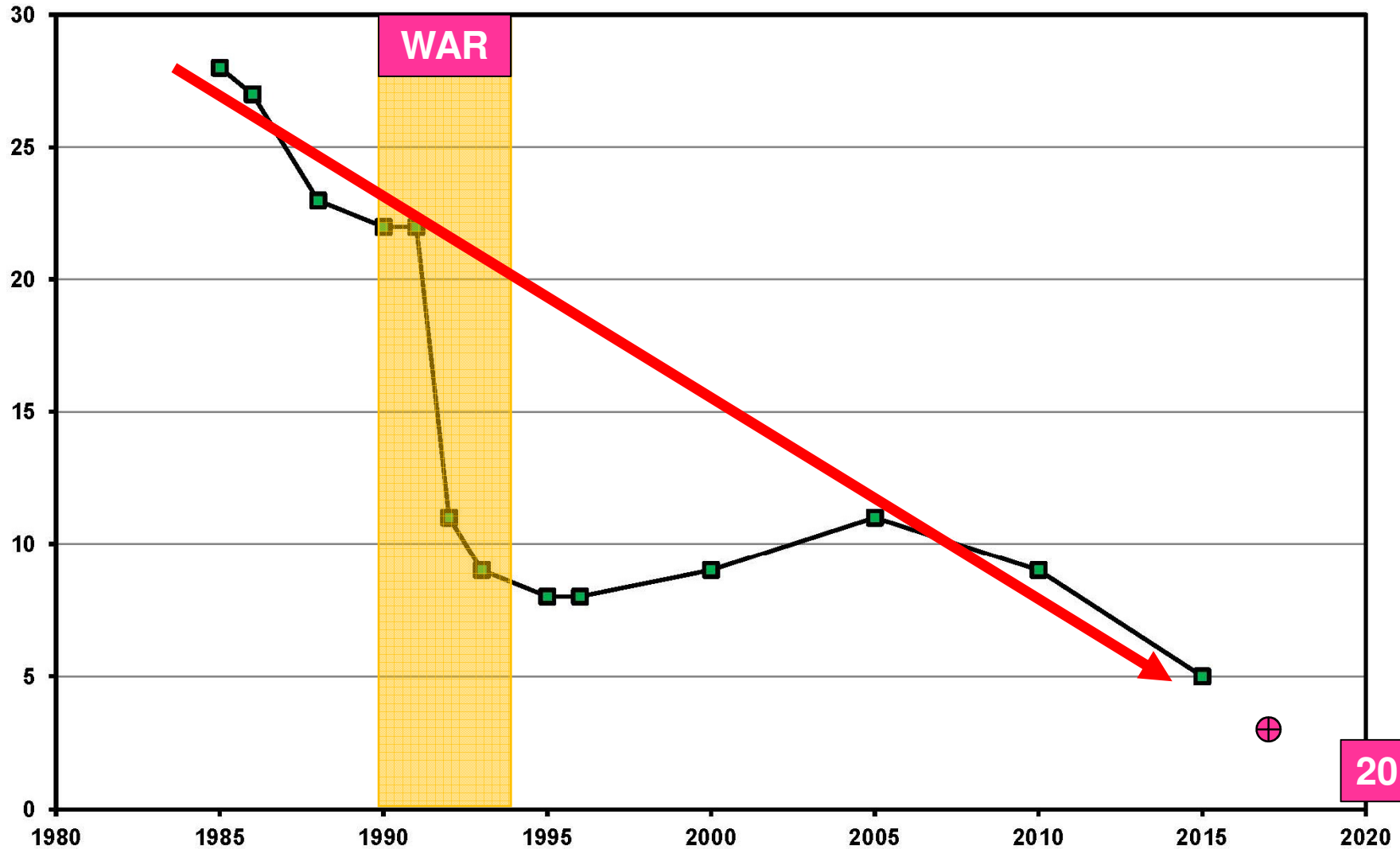


Ljubljana – Zagreb – Beograd
 Zagreb – Banja Luka – Doboј – Sarajevo
 Ljubljana – Knin
 Doboј – Tuzla

Presentation of pilot research results

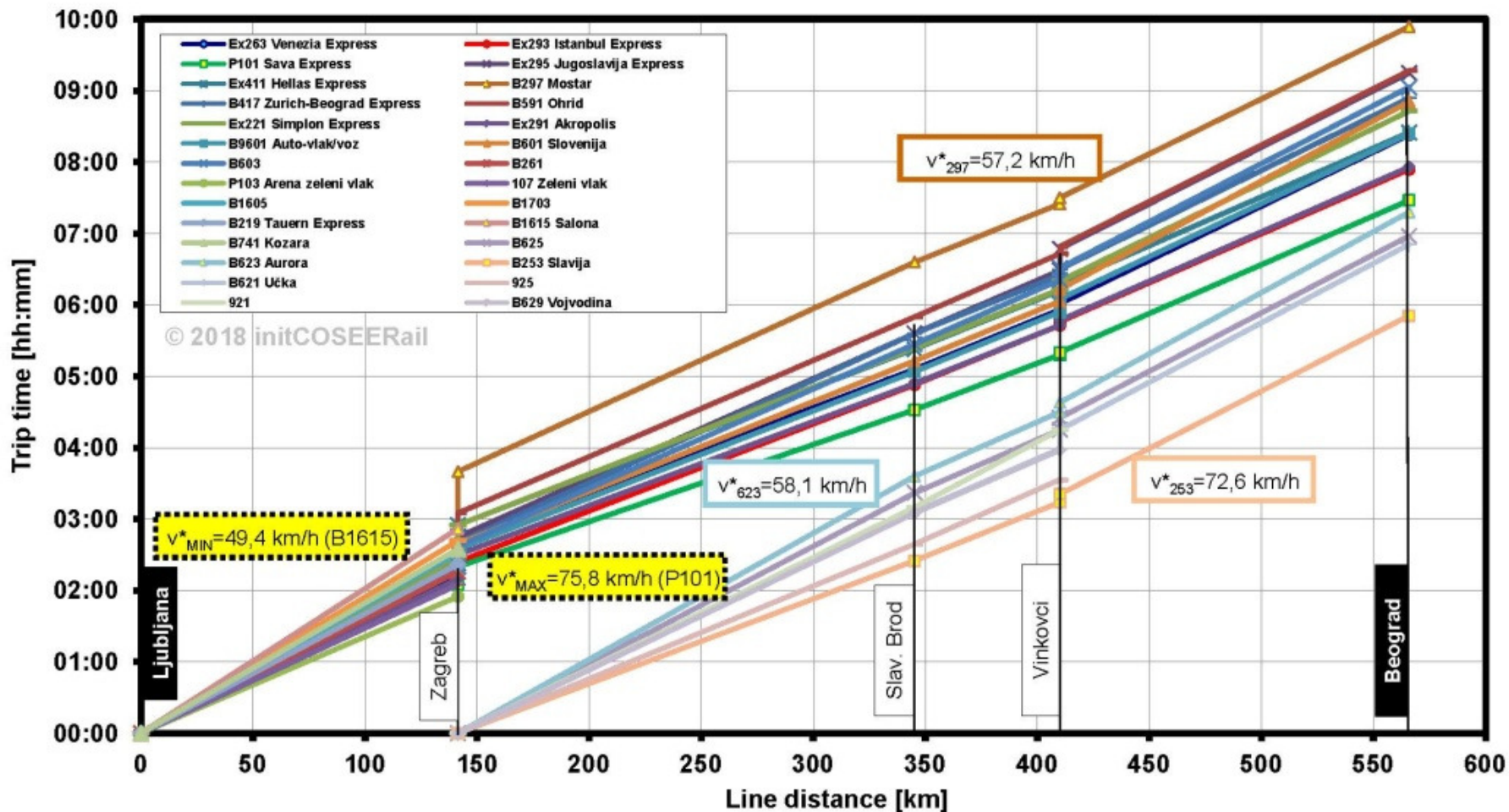
Timetable Research

LJ - ZG - BG: Development of train numbers



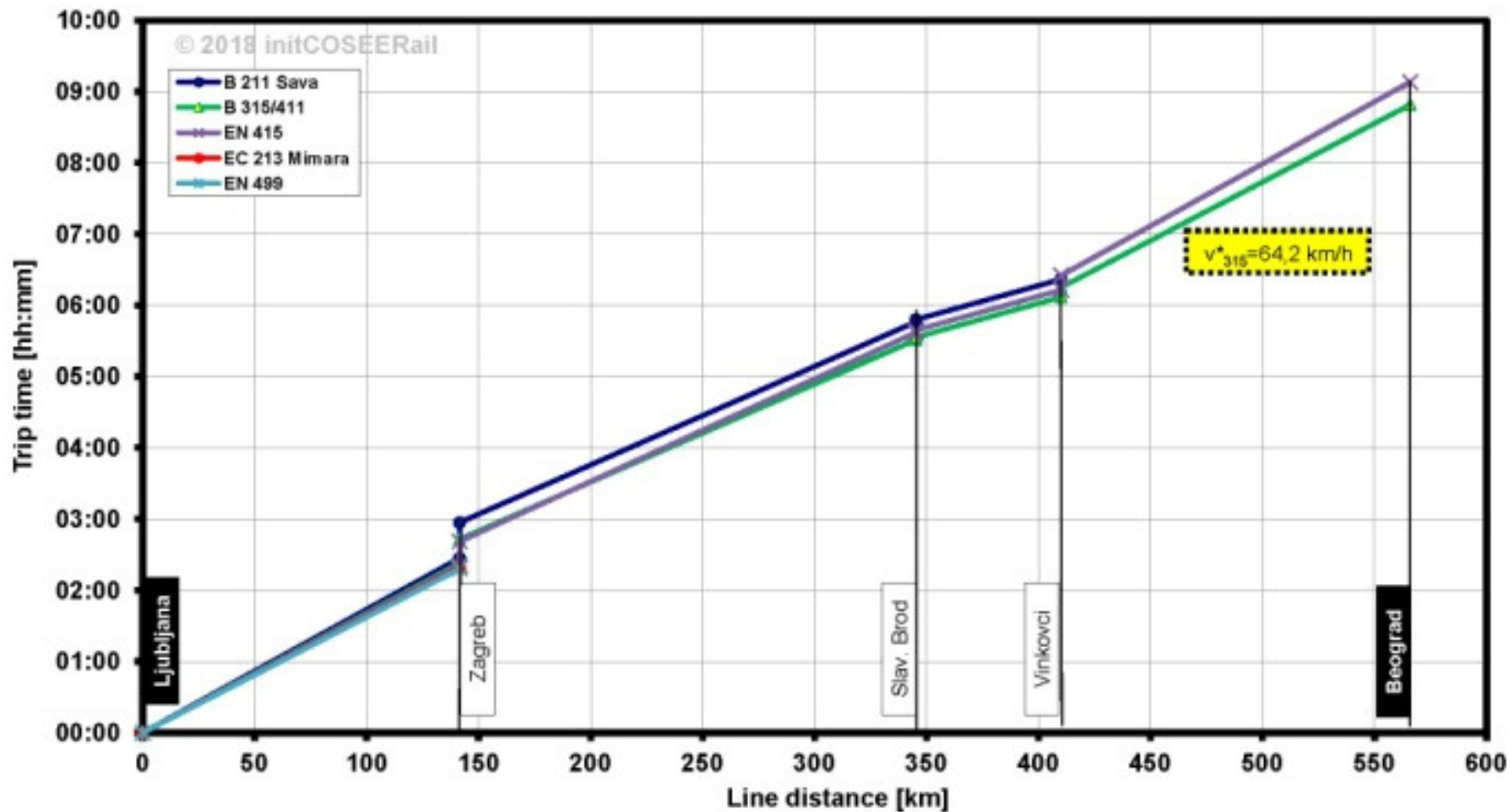
Timetable Research

Trajectory: Ljubljana - Zagreb - Beograd (1985)



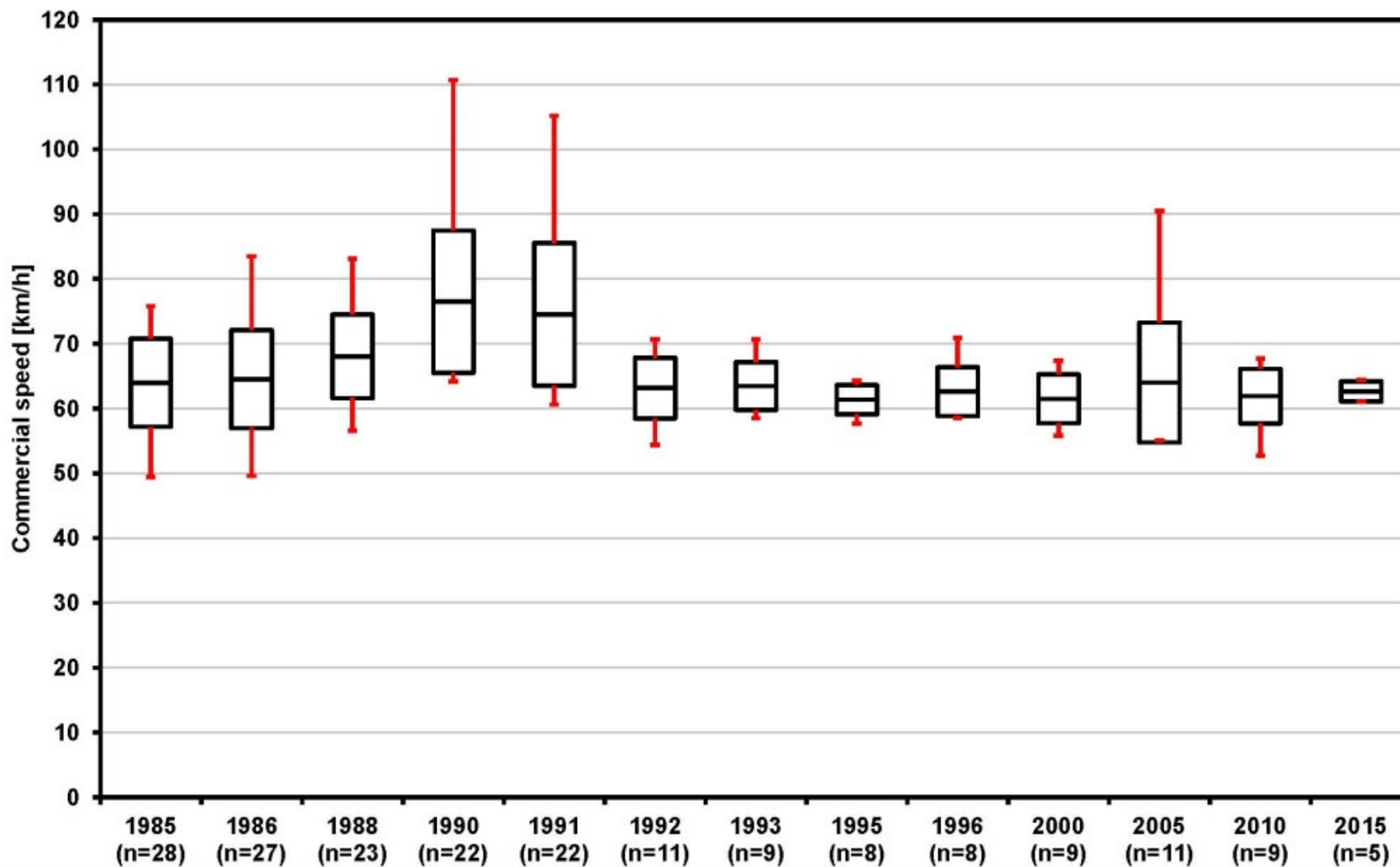
Timetable Research

Trajectory: Ljubljana - Zagreb - Beograd
(2015)



Timetable Research

Commercial speed boxplot: Ljubljana - Zagreb - Beograd





Ongoing projects and plans



venia

patia

snia and Hercegovina

rbia

sovo

ntenegro

cedonia

ania

Presentation of results

Scientific paper in September 2018 - ICTTE conference in Belgrade

„Barriers to trans-national passenger rail services in the Western Balkans – The quantitative background”



RESEARCH CENTER OF
TRANSPORT PLANNING AND
TRAFFIC ENGINEERING



LIR
evolution

fin project
fund raising & profit



DSPF
danube strategic project fund



City of  V

Part-financed by the European Union and

initCOSEERail



Thank you for your attention!