



**TRT TRASPORTI E TERRITORIO SRL**

# **TRANSPORT STUDY FOR THE DANUBE MACRO-REGION**

**Silvia Maffii and Marco Brambilla**

**14<sup>th</sup> STEERING GROUP MEETING  
Ljubljana, 30 May 2017**



*\*Limitatamente  
alla sede di Milano*

**TRT TRASPORTI E TERRITORIO srl**

MILANO: VIA RUTILIA 10/8 - 20141 - TEL. +39 02 57410380 FAX +39 02 55212845

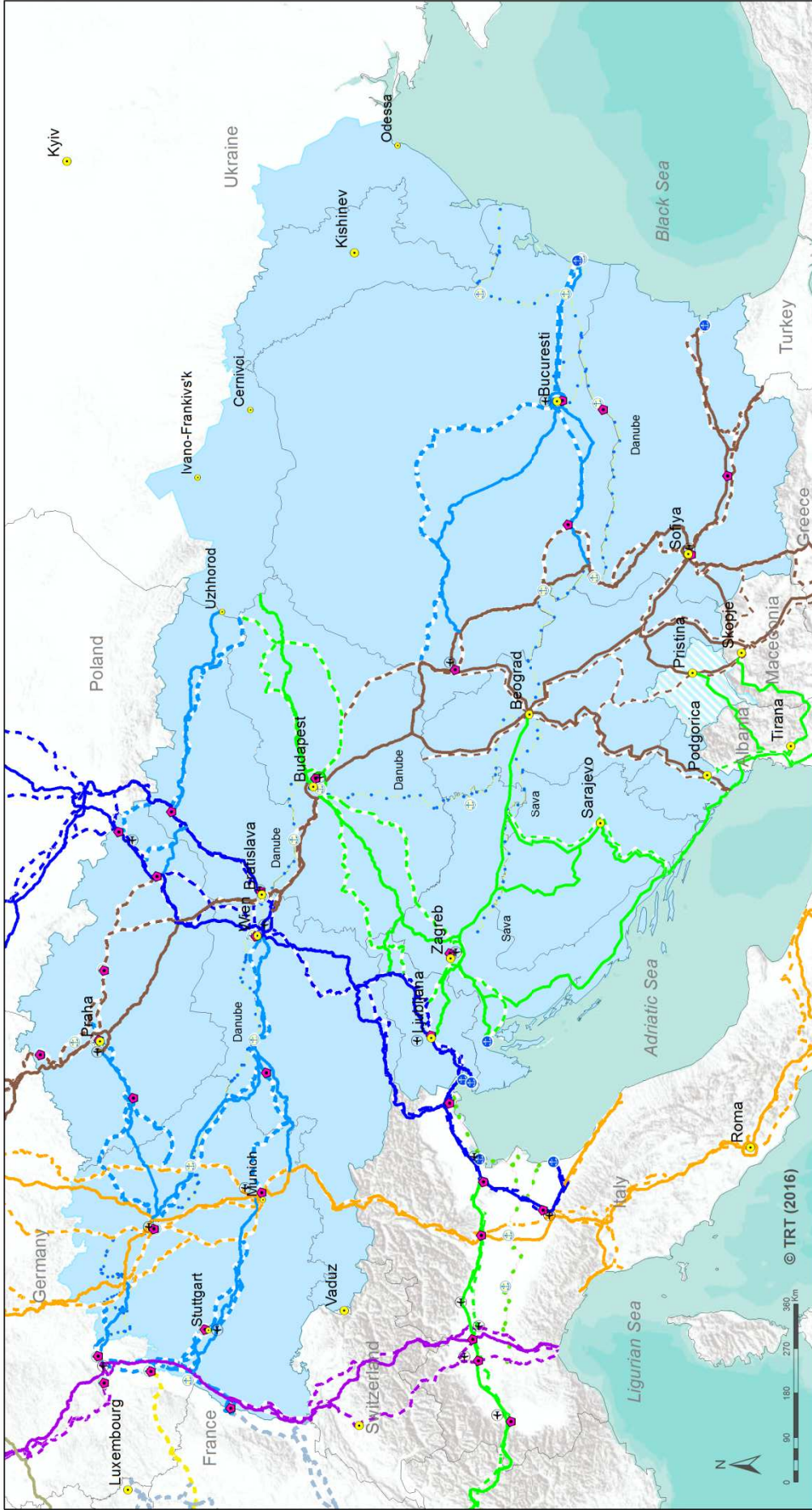
BRUXELLES: AVENUE DE LA JOYEUSE ENTRÉE 1 – B-1040 - TEL +32 2 6479100 FAX +32 2 2306908

LECCE: VIA G. CANDIDO, 6 – 73100 - TEL./FAX +39 0832 092310

EMAIL: [INFO@TRT.IT](mailto:INFO@TRT.IT) | PEC: [TRT@PEC.IT](mailto:TRT@PEC.IT)

[WWW.TR.T.IT](http://WWW.TR.T.IT) | [WWW.RICERCHETRASPORTI.IT](http://WWW.RICERCHETRASPORTI.IT)





**RAIL CORRIDORS**

- Baltic Adriatic
- Mediterranean
- Orient /East - Med
- Scand - Med
- Rhine - Alpine
- Rhine - Danube
- Atlantic
- North Sea - Mediterranean

**ROAD CORRIDORS**

- Baltic Adriatic
- Mediterranean
- Orient/East - Med
- Scand - Med
- Rhine - Alpine
- Rhine - Danube

**Waterways**

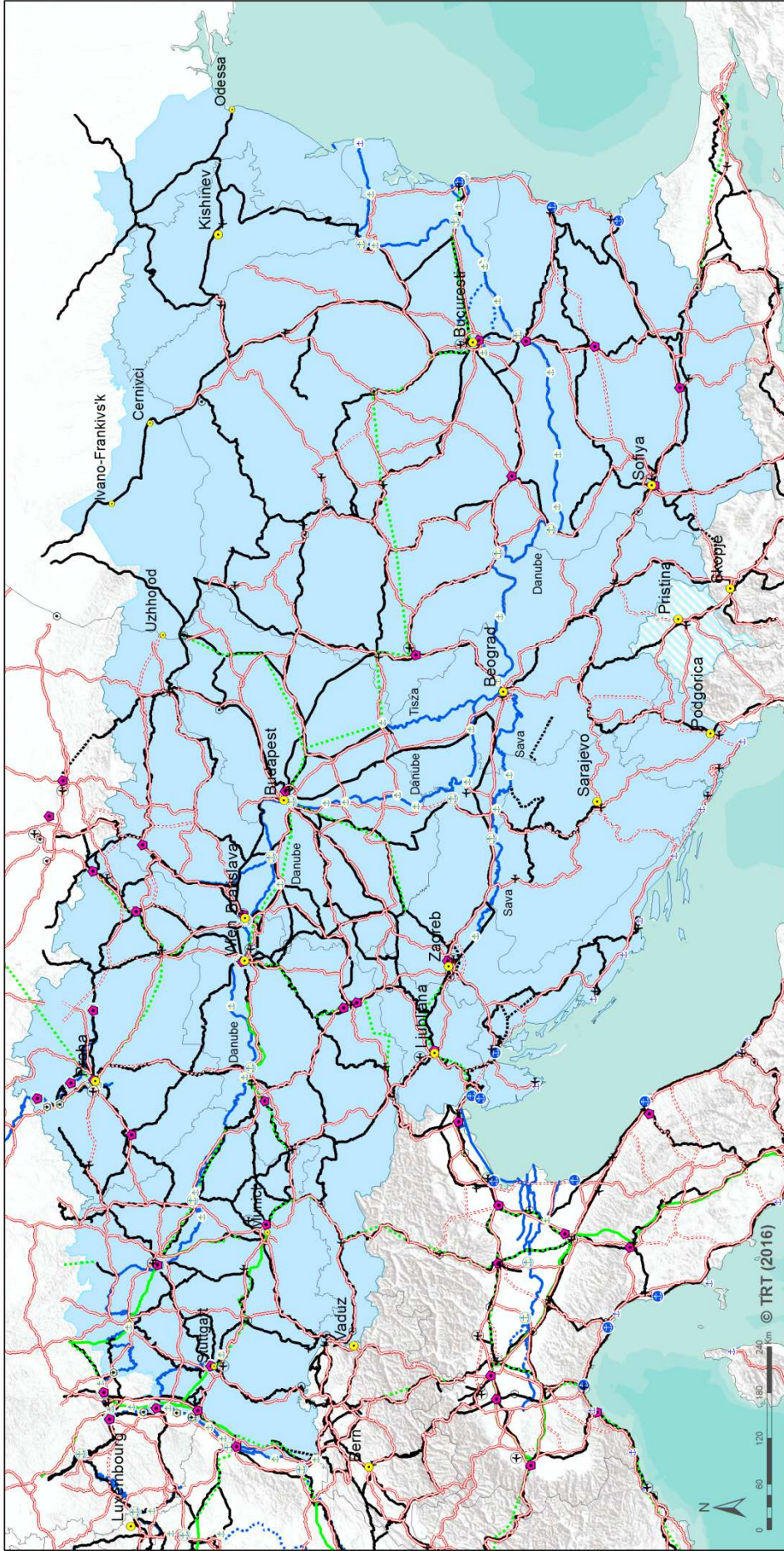
- Mediterranean corridor
- Rhine - Danube corridor

- ⊕ Airports
- ⊕ Seaports
- ⊕ Rail-Road Terminals
- ⊕ Inland Ports

- Country Boundaries
- EU Strategy for the Danube Macro-Region

Source: TRT elaboration based on: TEN-T Core&Comprehensive Network, [GIS DYNAMIC MAPS - TENtec, EC (DG MOVE)]  
 Macro-Regional Strategies [Directorate-General for Regional and Urban Policy, EC]



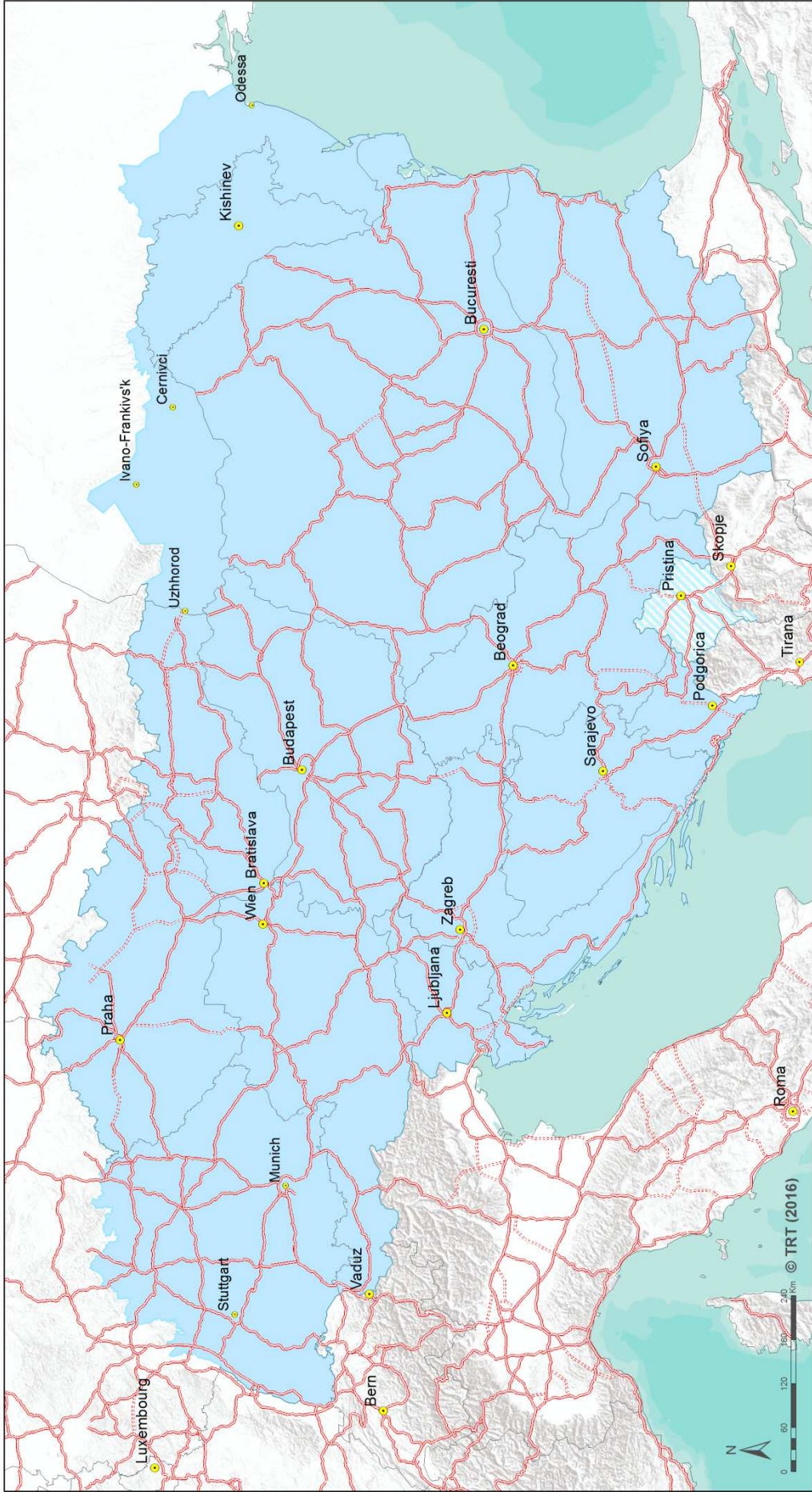


### Transport Infrastructure networks

- ✈ Airport Core
- + Airport Compr.
- 🚢 Port Core
- ⚓ Port Compr.
- 🚗 RRT Core
- ⦿ RRT Compr.
- 🌊 Inland Port Core
- ⚓ Inland Port Compr.
- Rail Conventional
- Rail High Speed
- ⋯ Rail Conventional / Planned
- ⋯ Rail High Speed / Planned
- Road / Completed or To be upgraded
- ⋯ Road / Planned
- Waterways Core
- ⋯ Waterways Core / Planned
- Capital city
- Country Boundaries
- EU Strategy for the Danube Region

Source: TRT elaboration based on: the ESPON TRACC project [Road/Rail: TransTools 2005 / ETIS 2010, IWW/AIR/RT: RRG GIS Database 2011, Maritime: TRUST network model], TEN-T Core&Comprehensive Network, [GIS DYNAMIC MAPS - TENtec, EC (DG MOVE)], Macro-Regional Strategies [Directorate-General for Regional and Urban Policy, EC]



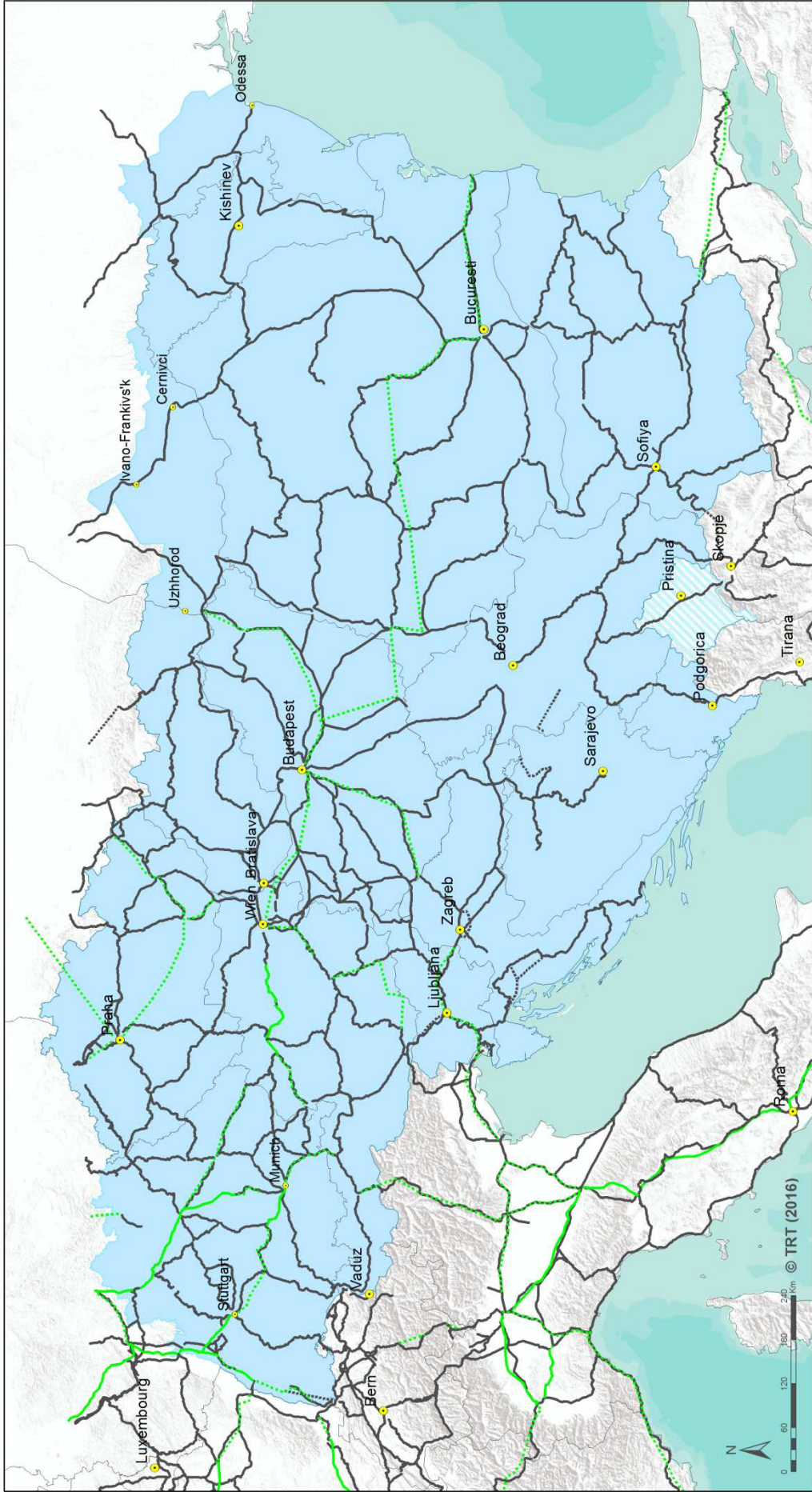


### Transport Infrastructure road network

- Road / Completed or To be upgraded
- ⋯ Road / Planned
- Capital city
- Country Boundaries
- EU Strategy for the Danube Region

Source: TRT elaboration based on: the ESPON TRACC project [Road/Rail: TransTools 2005 / ETIS 2010, IWW/AIR/IRT: RRG GIS Database 2011, Maritime: TRUST network model], TEN-T Core&Comprehensive Network, [GIS DYNAMIC MAPS - TENtec, EC (DG MOVE)], Macro-Regional Strategies [Directorate-General for Regional and Urban Policy, EC]



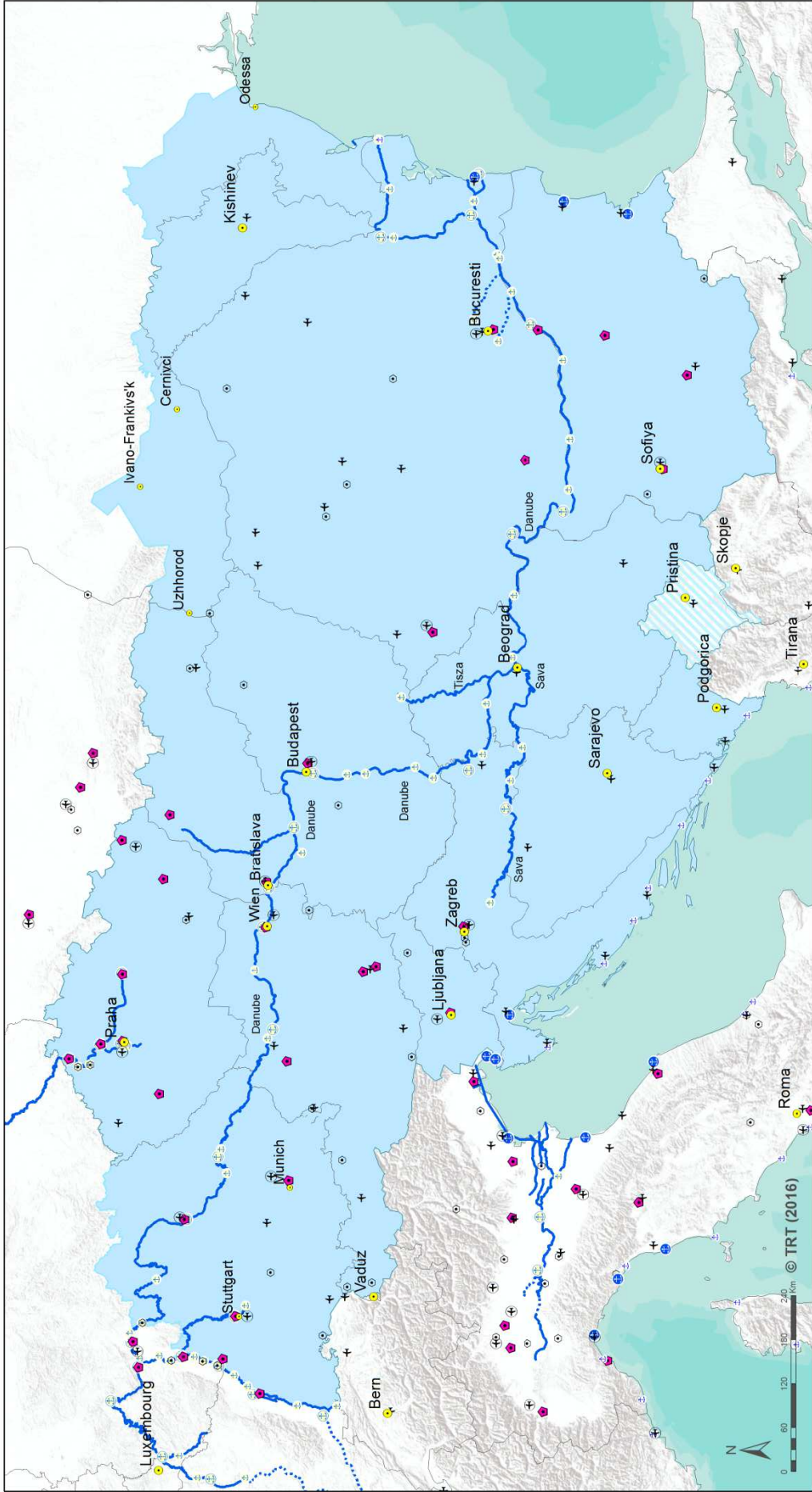


**Transport Infrastructure rail network**

- Rail Conventional
- - - - Rail Conventional / Planned
- Rail High Speed
- - - - Rail High Speed / Planned
- Capital city
- Country Boundaries
- EU Strategy for the Danube Region

Source: TRT elaboration based on: the ESPON TRACC project [Road/Rail: TransTools 2005 / ETIS 2010, IWW/AIR/RTT: RRG GIS Database 2011, Maritime: TRUST network model], TEN-T Core&Comprehensive Network, [GIS DYNAMIC MAPS - TENtec, EC (DG MOVE)], Macro-Regional Strategies [Directorate-General for Regional and Urban Policy, EC]





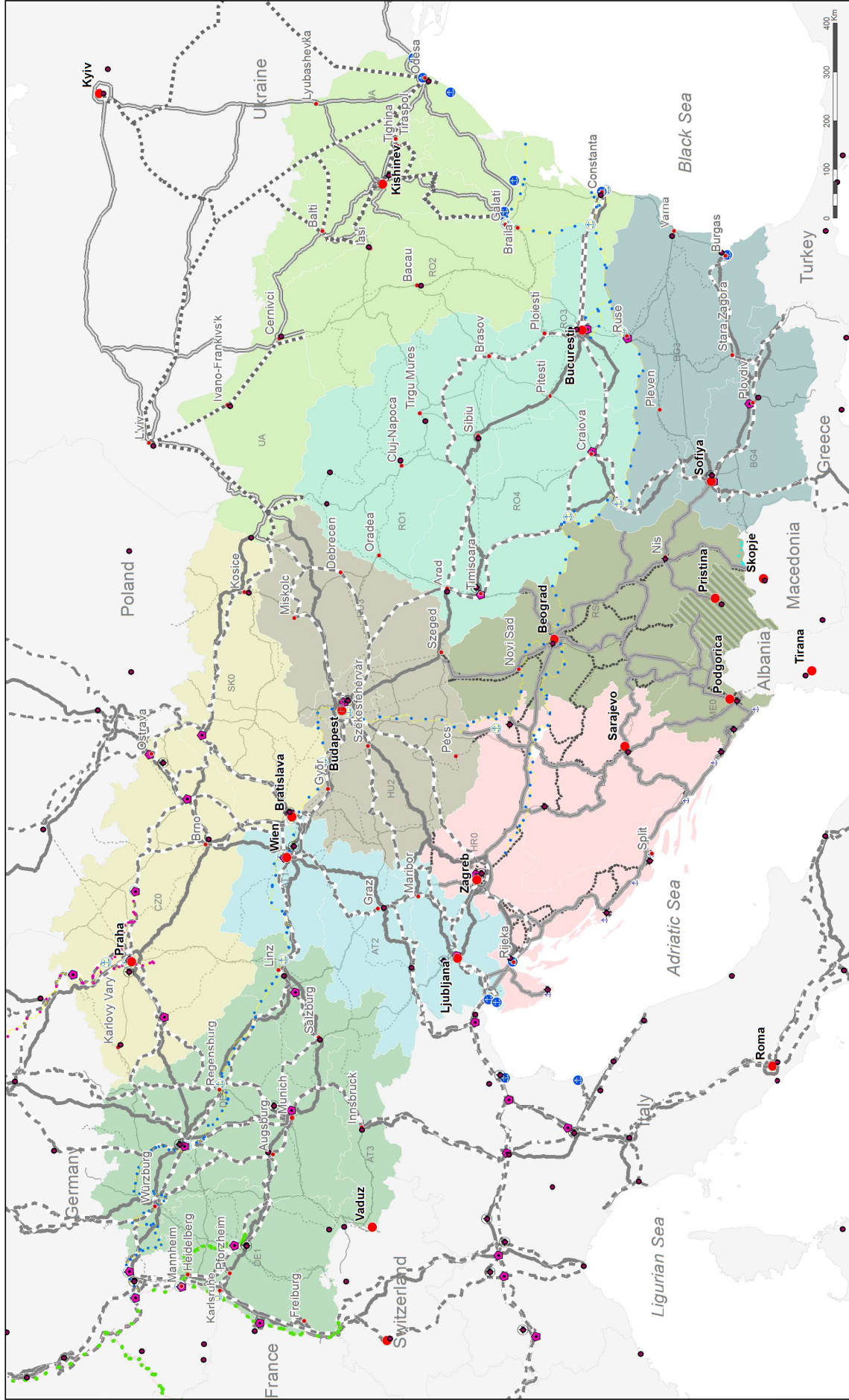
### Transport Infrastructure waterways network, inland ports, ports and airports

- ⊕ Airport Core
- + Airport Compr.
- ⊕ Port Core
- + Port Compr.
- ◆ RRT Core
- ⊙ RRT Compr.
- ⊕ Inland Port Core
- + Inland Port Compr.

- Waterways Core
- ⋯ Waterways Core / Planned
- ⊙ Capital city
- Country Boundaries
- EU Strategy for the Danube Region

Source: TRT elaboration based on: the ESPON TRACC project [Road/Rail: TransTools 2005 / ETIS 2010, IWW/AIR/RR: RRG GIS Database 2011, Maritime: TRUST network model], TEN-T Core&Comprehensive Network, [GIS DYNAMIC MAPS - TENec, EC (DG MOVE)], Macro-Regional Strategies [Directorate-General for Regional and Urban Policy, EC]





**MAP of FUNCTIONAL REGIONS**

Elaboration based on:  
 TEN-T Core & Comprehensive Network (GIS DYNAMIC MAPS - TENec\_EC (DG MOVE))  
 ESPON TRACC project (Road/Rail: TransTools 2005 / ETIS 2010, IWW/R/RRT, RRG GIS Database 2011, Maritime: TRUST network model)  
 © TRT (2016)

**Functional Regions**

1	2	3	4	5	6	7	8	9
Light Green	Light Blue	Light Yellow	Light Purple	Light Orange	Light Red	Light Green	Light Blue	Light Yellow

**TEN-T Corridors**

- Road: Solid grey line
- Rail: Dashed grey line
- IWW:
  - Orient/East - Med corridor: Dotted red line
  - Rhine - Danube corridor: Dotted blue line
  - Rhine - Alpine corridor: Dotted green line

**TEN-T Network**

- Airport Core: Circle with airplane icon
- Port Core: Circle with ship icon
- RRT Core: Circle with train icon
- IWW Port: Circle with ship and train icon

**Eastern Partnership Network**

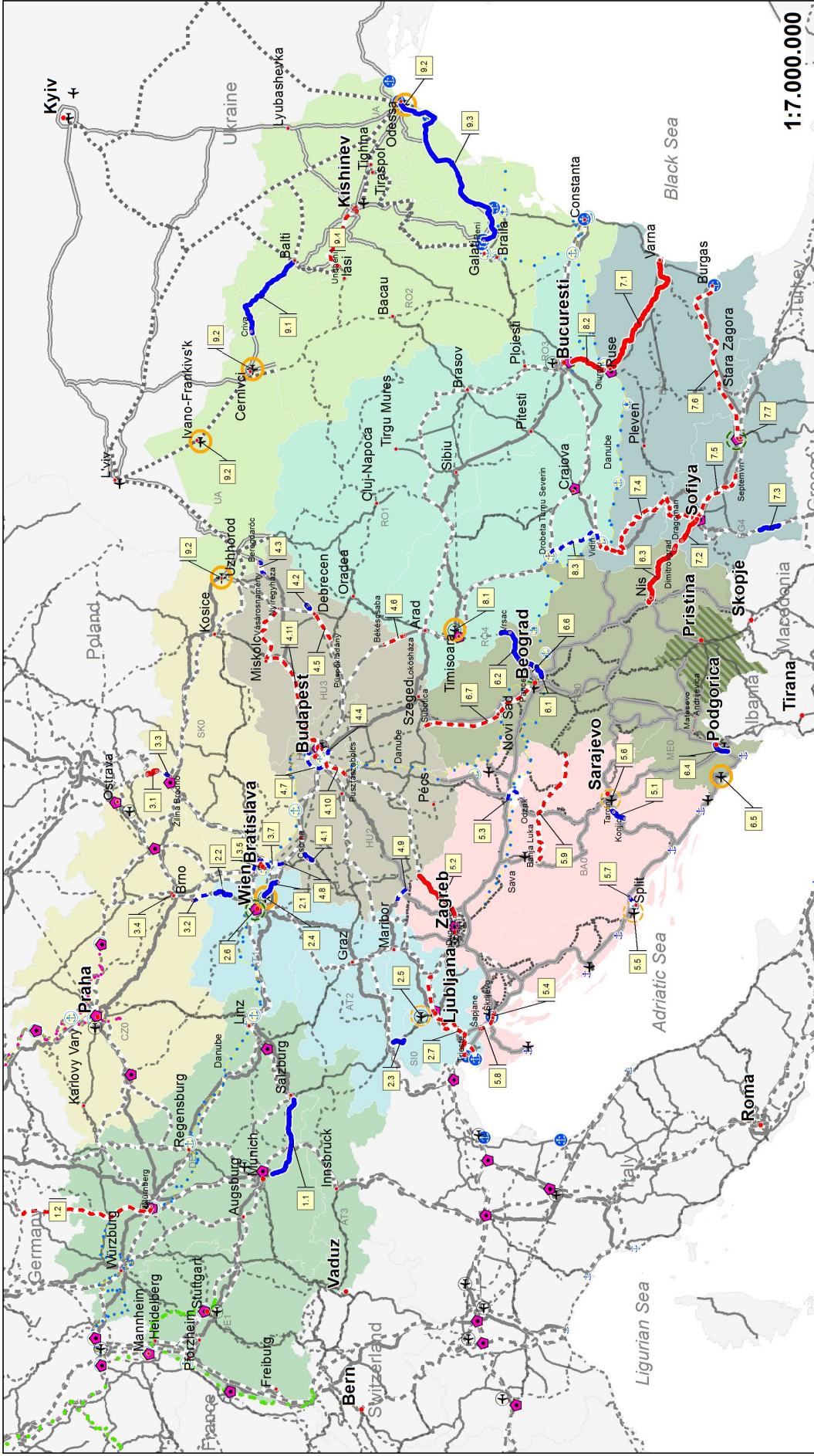
- Airports: Circle with airplane icon
- Ports: Circle with ship icon
- Railways: Dotted grey line
- Roads: Solid grey line

**SEETO Network**

- Road: Solid grey line
- Rail: Dotted grey line

**Scale:** 0, 100, 200, 300, 400, 500 Km

**TRT**



**Localisation of identified and other pre-identified transport projects of the Danube Macro-Region**  
 April 2017



- Identified future projects**
- Road: Solid blue line
  - Rail: Dashed blue line
  - Aviation: Blue circle with airplane icon
  - Multimodal terminal: Blue circle with 'M' icon
- Other pre-identified projects**
- Road: Dotted blue line
  - Rail: Dotted red line
  - Aviation: Red circle with airplane icon
  - Multimodal terminal: Red circle with 'M' icon

- Eastern Partnership Network**
- Road: Solid grey line
  - Rail: Dashed grey line
  - Airport: Blue circle with airplane icon
  - Port: Blue circle with 'P' icon
- SEETO Network**
- Road: Solid black line
  - Rail: Dashed black line

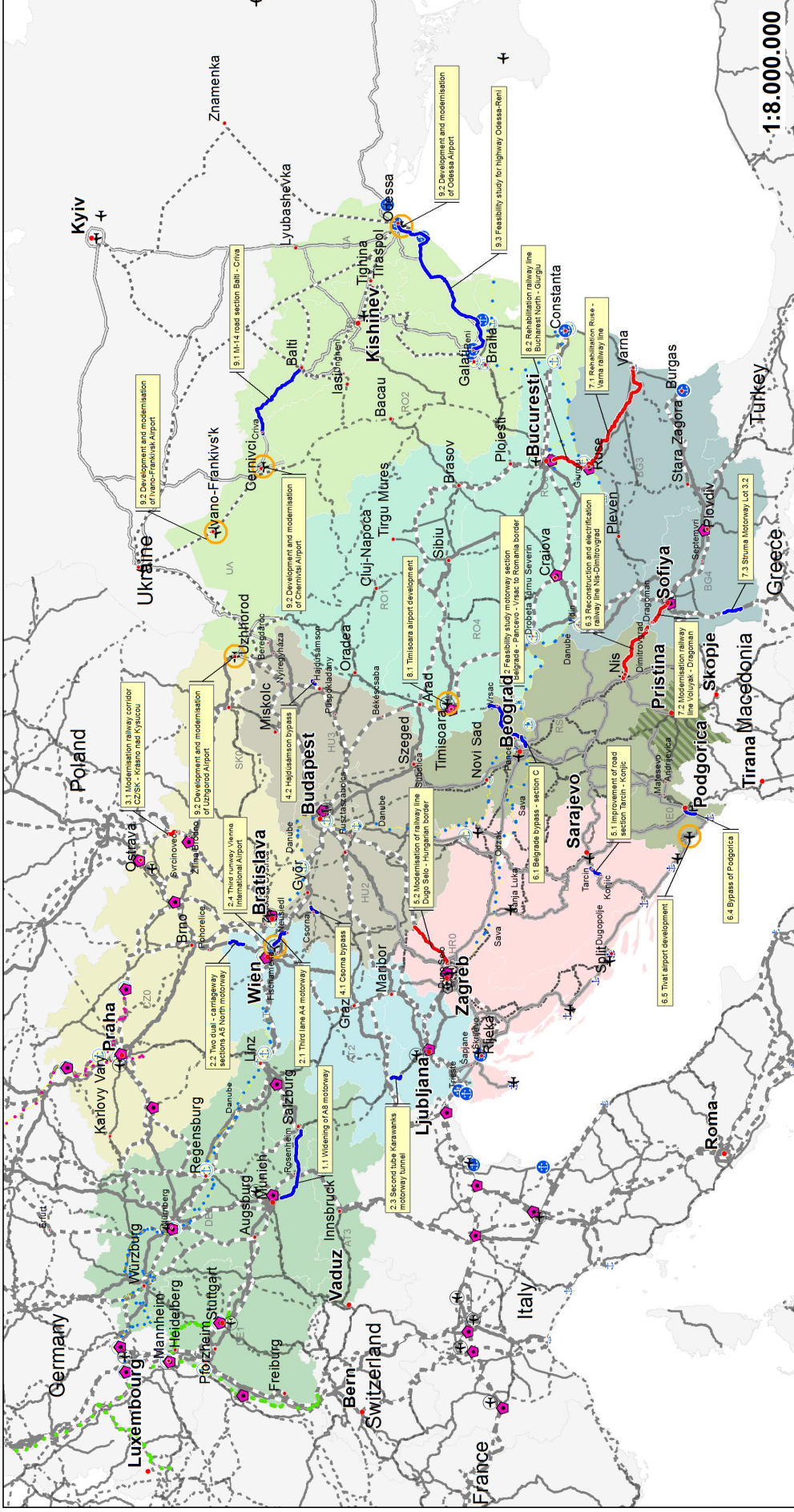
- TEN-T Network**
- Airport Core: Blue circle with airplane icon
  - Port Core: Blue circle with 'P' icon
  - RRT Core: Blue circle with 'R' icon
  - IWW Port: Blue circle with 'I' icon

- TEN-T Corridors**
- Road: Solid grey line
  - Rail: Dashed grey line
  - IWW: Green line with 'I' icon
  - Orient/East - Med corridor: Yellow line with 'O' icon
  - Rhine - Danube corridor: Red line with 'R' icon
  - Rhine - Alpine corridor: Blue line with 'A' icon
- TEN-T Comprehensive**
- Road: Solid black line
  - Rail: Dashed black line

- Functional Regions**
- 1: Light green
  - 2: Light blue
  - 3: Yellow
  - 4: Light purple
  - 5: Pink
  - 6: Dark green
  - 7: Teal
  - 8: Light green
  - 9: Light blue

Elaboration based on:  
 TEN-T Core & Comprehensive Network; GIS DYNAMIC MAPS - TENtec, EC (DG MOVE)  
 ESPON TRACC project (Road/Rail - Transpote 2005/ETIS 2010, IWWA/RRT, FRG GIS Database 2011, Maritime, TRUST network model)





### Functional Regions

1	Green
2	Light Blue
3	Light Green
4	Light Yellow
5	Light Pink

### TEN-T Corridors

Road	Grey line
Rail	Dashed grey line
IWW	Yellow line with blue dots
Orient/East - Med corridor	Yellow line with red dots
Rhine - Danube corridor	Blue line with red dots
Rhine - Alpine corridor	Blue line with green dots

### TEN-T Comprehensive

Road	Grey line
Rail	Dashed grey line

### TEN-T Network

Airport Core	Circle with cross
Airport Compr.	Circle with plus
Port Core	Circle with blue dot
Port Compr.	Circle with blue dot and plus
RRT Core	Pink diamond
RRT Compr.	Pink diamond with plus
IWW Port	Blue circle with plus

### Eastern Partnership Network

Road	Grey line
Rail	Dashed grey line
Airport	Circle with cross
Port	Circle with blue dot

### SEETO Network

Road	Grey line
Rail	Dashed grey line

### Identified future projects

Road	Blue line
Rail	Red line
Aviation	Orange circle
Multimodal terminal	Green circle

### Localisation of identified future transport projects of Danube Macro-Region

April 2017

© TRT (2017)

Elaboration based on:  
 TEN-T Core & Comprehensive Network: GIS DYNAMIC MAPS - TENec, EC (DG MOVE)  
 ESPON TRACC project (Road/Rail): Trans Tools 2005 / ETIS 2010, IWW/AIR/RRT: RRG GIS Database 2011, Maritime: TRUST network model