

The EU Strategy for the Danube Region
Priority Area 1b: To improve mobility and Multimodality – road, rail and air links

Strategy implementation by PA1b: Are we making progress? (2011 – 2018)

Franc Žepič, PAC 1b
Ministry of Infrastructure, Slovenia



Co-financed by the EU (ERDF and IPA)

EUSDR
17th PA1b SG meeting
11 October 2018 | JP Putevi
Belgrade, Serbia

The Danube Region ...

EUSDR – Communication and Action Plan:

- 8 December 2010: adopted by the European Commission

- 24 June 2011: endorsed by the European Council!

EUSDR - 11 (12) Priority areas

PA 1: To improve Mobility and Multimodality

✓ PA 1a: inland waterways - Austria and Romania

✓ PA 1b : rail, road and air links - Slovenia and Serbia



- **14 States:** Germany, Austria, Czech Republic, Croatia, Slovakia, Hungary, Slovenia, Romania, Bulgaria, Bosnia and Herzegovina, Serbia, Montenegro, Moldova, Ukraine
- **Population:** 115 million (EU28: 512, incl. UK 66 mio) **Area:** 1,092.591 km² (EU28: 4,475,757)

PA1b Targets

(Revised targets: Approved March 2016)

Priority Area 1B "TO IMPROVE MOBILITY AND INTERMODALITY - ROAD, RAIL AND AIR"

- I. Support **efficient freight railway services** and **improved travel times** for competitive railway **passenger connections** between major cities in the Danube Region (DR) by 2030.
- II. Support fully functional **multi-modal TEN-T Core Network Corridors** by 2030.
- III. Support the development of efficient **multimodal terminals** at sea, river and dry ports in the Danube Region and ensure their connectivity and access through the integration of all modes of transport and efficient **logistics** services by 2030.
- IV. Support improvement of the **regional air connectivity** and the implementation of the Single European Sky initiative.
- V. Facilitate the improvement of **secondary and tertiary roads** in the DR.
- VI. Support **safe and sustainable transport and mobility** in the Danube Region

PA1b Past Events:

- **17 STEERING GROUP MEETINGS** (22 June 2011 – 11 October 2018) & **HL meeting**
 - + (1) Ad hoc **Working Group on projects**; 9 – 10 February 2011, Belgrade
 - + (2) **Joint meeting Pa1a and PA1b**; 3 May 2012, Bratislava and 4 May 2016, Zagreb
 - + (1) **High-level meeting** on projects in the Danube region, 28 September 2017, Belgrade
- **8 WORKSHOPS / SEMINARS:**
 - (2) **“Common Transport Vision for the Danube Region“**; 27 September 2012, Belgrade and 15 March 2013, BXL
 - (1) **Rail Freight Corridors** (Action 2), 27 June 2013; Ljubljana
 - (1) **Air Transport Development** (Action 3), 5 September 2013; Belgrade
 - (2) **ITS in the Danube Region** (Action 7), 27 March 2014, Timisoara and 25-26 September 2014, Vienna
 - (1) **Improving attractiveness and competitiveness of Railways in the Danube Region** (Action 2), 21-22 November 2016; Ljubljana
 - (1) **Joint UNECE and PA1b WS: „How to develop resilient infrastructure?“**; 16-17 November 2017, Ljubljana
- **13 CONFERENCES:**
 - (3) **“The Danube Region Transport Days“**; 18-19 Nov. 2012, Ljubljana, 3 Oct. 2013: Belgrade and 21 -22 Oct. 2014, Ljubljana
 - (4) **“Transport & Research in the Danube Region“**; 2-3 April 2014, Ljubljana, 20-21 October 2015, Čatež (SI) and 9 November 2016, Novo mesto (SI), 6-7 November 2017, Ljubljana (SI)
 - (4) **“Transport & Logistics in the Danube Region“**; 10 March 2014, 26 March 2015, 14 April 2016 and 5 April 2017, Belgrade
 - (1) **“Road Safety in the Danube Region“**, 20-21 May 2015, Ljubljana
 - (1) **„Development & Maintenance of Road Surfaces in the Danube Region“**, 25 November 2015, Bled (SI)

TOTAL: 42 EVENTS! Out of it 21 dedicated to stakeholders (conferences, workshops)!

PA1b: Understanding the Region

Basic STUDIES for the Danube macro-region initiated, supported and facilitated by PA1b:

- 1) Transport Analysis for the Danube Region (TAD);
completed June 2017***
- 2) Transport Infrastructure – Road links;
completed March 2018**
- 3) Study of Intermodal transport Users' Needs in the Danube Region;
completed July 2018**

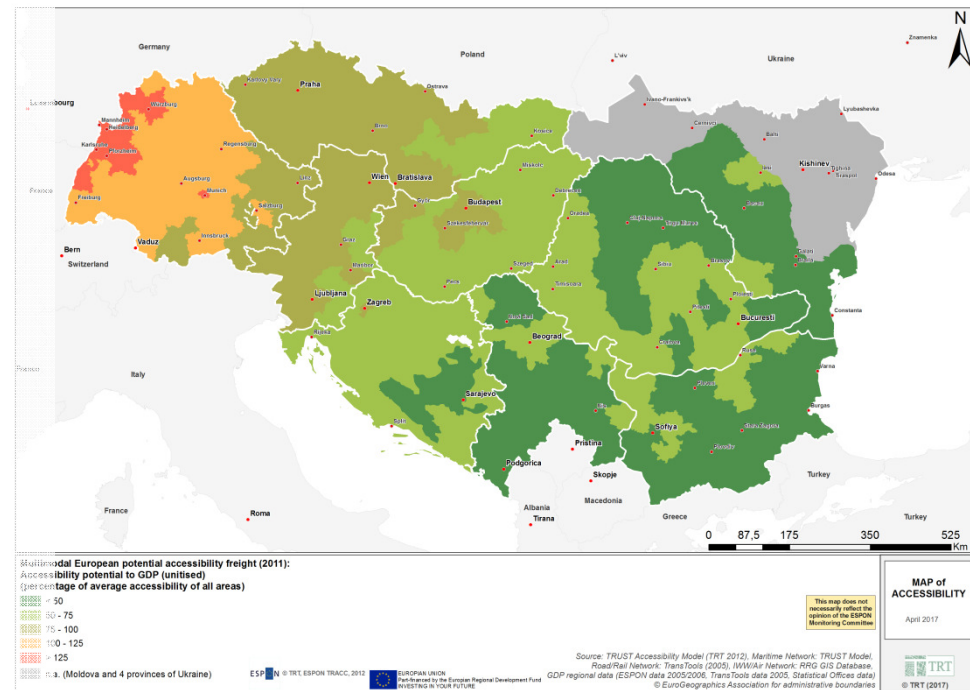
*Available at PA1b Web site: www.danube-transport.eu

Challenges

Bridging the gaps:

- **Accessibility?**
- **Connectivity?**
- Motorways?
- Secondary networks?
- Road safety?
- Public transport?
- High speed railways?
- Terminals, Logistics (LPI)?
- Air Connectivity?
- Etc.

Accessibility



Source: Internet, ESPON

Transport infrastructure and Transport in the Danube region

Danube Region: TEN-T, SEETO and ENP

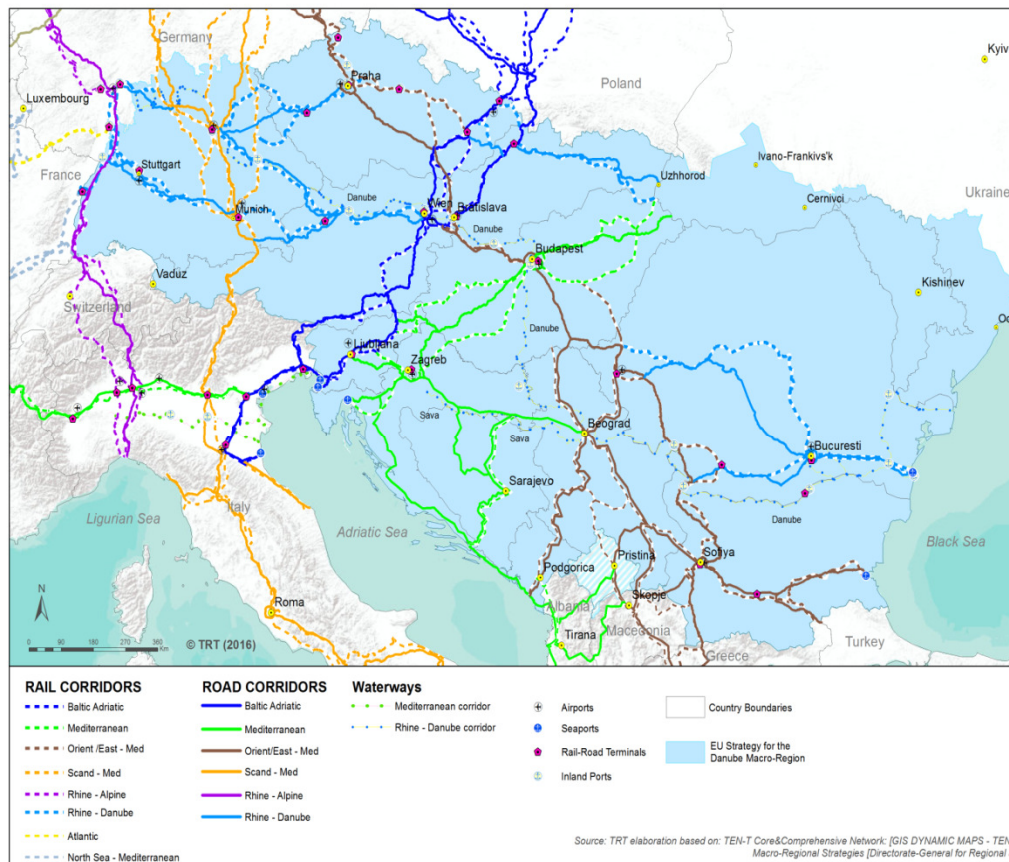
Roads, ports and RRT's



Source: TENtec

TEN-T CNC crossing the Danube macro-region

TEN-T (Reg. 1315/2013 on TEN-T and Reg. 1316/2013 on CEF) CNCs, including indicative extensions to the Western Balkans



1. Scandinavian-Mediterranean Corridor (FI, SE, DK, DE, AT, IT, MT) - Mr. Pat Cox (IE); Since 12 March 2014

2. Baltic-Adriatic Corridor (PL, SK, CZ, AT, SI, IT) - Mr Kurt Bodewig (DE); Since 12.3.2014 and Ms Anne Elisabeth Jensen (DK); Since 16 September 2018

3. Orient/East-Med Corridor (DE, CZ, SK, AT, HU, RO, BG, GR, CY) - Mr. Mathieu Grosch (BE); 1 July 2014

4. Mediterranean Corridor (ES, FR, IT, SI, HR, HU) - Mr L. J. Brinkhorst * (NL); Since 12.3.2014 until 16.9.2018, Ms Iveta Radičová (SK); Since 16 september 2018

5. Rhine-Danube Corridor (FR, DE, AT, CZ, SK, HU, HR, RO, BG) - Ms Karla Peijs * (NL); Since 12 March 2014

6. Rhine-Alpine Corridor (NL, BE, DE, FR, IT) - Mr Paweł Wojciechowski (PL); Since 27 May 2015

7. Atlantic Corridor (PT, ES, FR, DE) - Mr Carlo Secchi (IT); Since 12 March 2014

8. North Sea-Baltic Corridor (NL, BE, DE, PL, LT, LV, EE, FI) - Ms Catherine Trautmann (FR); Since 12 March 2014

9. North Sea-Mediterranean Corridor (IE, UK, FR, NL, BE, LU) - Mr Peter Balazs (HU); Since 12 March 2014

ROADS: Motorways (2017)

Danube Region

Motorways and expressways



January 2018

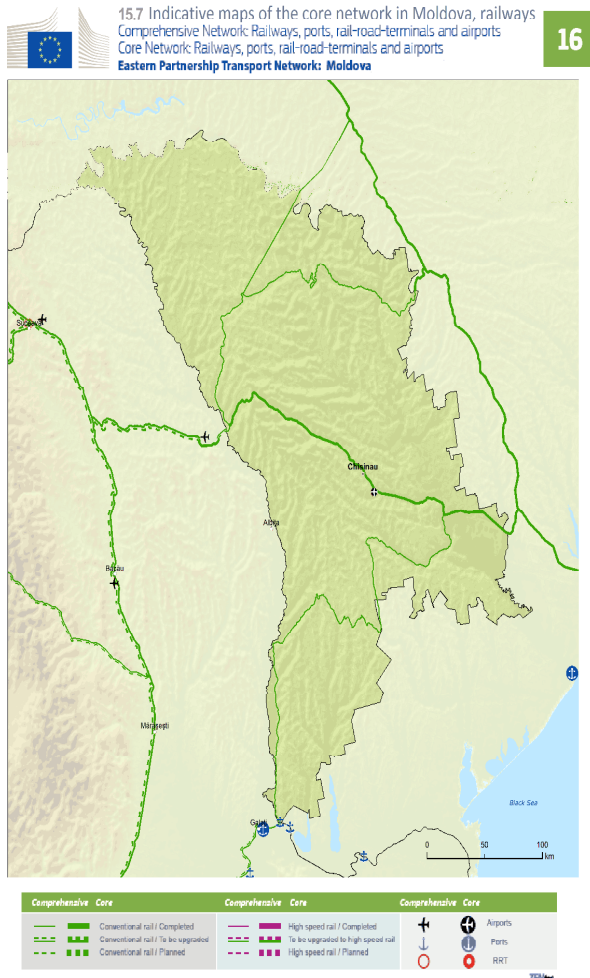
ROADS:

- Total lengths **880.000 km,**
- Motorways **12.592 km**
- main or national roads **105.593 km**

Challenge:

- No common categorisation!

TEN-T extension to EaP: Moldova and Ukraine



Network of Intermodal Terminals of Danube Region



Are macro-regional needs fulfilled?

Where are new intermodal terminals needed? ... and how many?

To be considered when looking ahead:

- **Sustainability:** „Green“ logistics,
- **Digitalization:** eLogistics
- **New business model:** „Circular economy“

Source: Study on intermodal transport users' needs in the Danube Region (2018)

Connections between terminals - the main providers of intermodal transport service at the national level in the Danube region



Trade & Transport trends:

The largest share of container traffic towards the Danube region flows through the Atlantic and North sea Ports ...

still !!



Source: Study on intermodal transport users' needs in the Danube Region (2018)

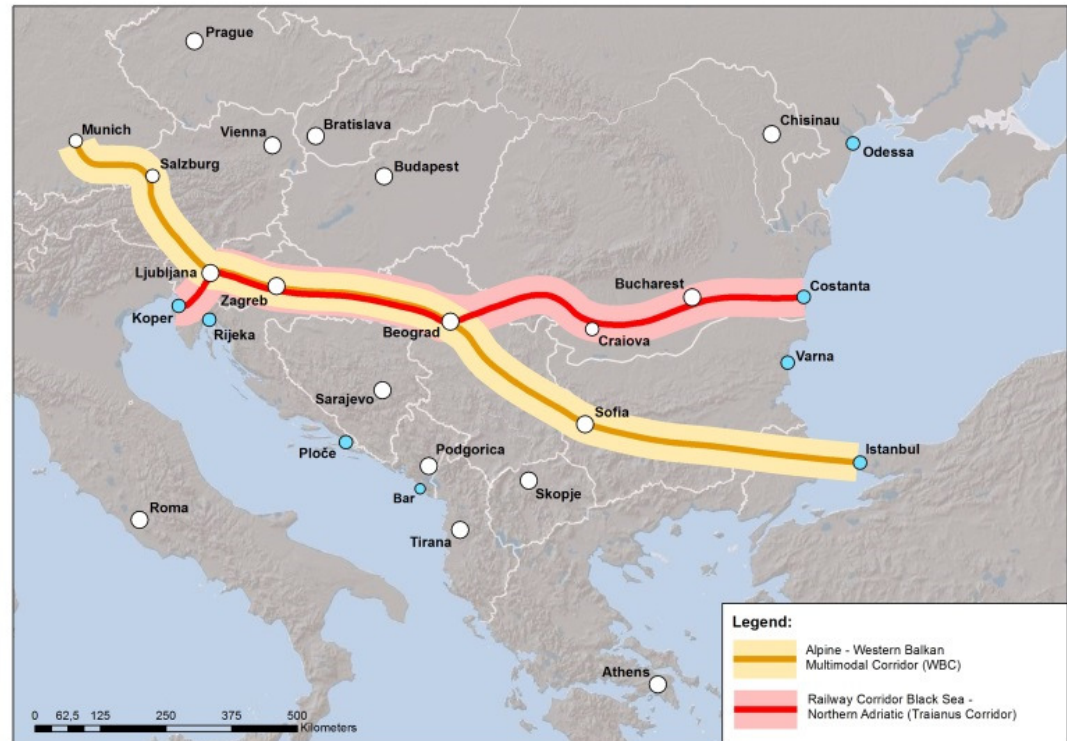
The New proposed Corridor Initiatives

Proposals supported by PA1b Steering Group:

b) „Traianus“ Rail Freight Corridor
 (Constanta – Bucharest – Craiova –
 Turnu Severin – Belgrade – Zagreb
 – Ljubljana – Koper/Rijeka):

a) Multimodal „Alpine-Western Balkans Corridor“: Munich -
 Salzburg – Ljubljana – Zagreb –
 Belgrade – Sofia - Svilengrad -
 (Istanbul)

Note: Letter of Intent signed on 7.10.2015 and The Commission Implementing Decision on the compliance of the proposal to establish the Alpine–Western Balkan rail freight corridor with Article 5 of Regulation (EU) No 913/2010 was published on 22.3.2018 (doc: C(2018) 1625 final) (for the RFC from Salzburg to Svilengrad (BG))!



Concluding remarks

CAN WE DO BETTER, FASTER AND MORE?

Thank you very much!



Please visit:
www.danube-transport.eu



PAC Serbia

Mr. Miodrag Poledica, State Secretary
Ministry of Construction, Transport and
Infrastructure
Belgrade
miodrag.poledica@mgsi.gov.rs

PAC Slovenia

Mr. Franc Žepič, Secretary
Ministry of Infrastructure
Ljubljana
franc.zepic@gov.si

Attendance

	Priority Area 1b STEERING GROUP MEETINGS																2018
	2011		2012			2013		2014		2015	2016			2017			
	1st	2nd	3rd	4th	5th	6th	7th	8th	9th	10th	11th	12th	13th	14th	15th	16th	17th
AT (15/16)	+	+	+	+	+	+	-	-	+	+	+	+	+	+	+	+	+
BG (11/16)	-	+	+	+	+	-	+	-	+	+	+	-	-	-	+	+	+
BiH (4/13)	-	-	-	-	-	-	-	-	-	-	-	+	+	-	+	+	-
CRO (10/13)	+	-	+	+	-	+	+	+	+	+	-	+	-	-	+	+	+
CZ (6/13)	+	-	-	-	-	-	-	-	-	-	-	-	+	+	+	+	+
DE (6/13)	+	+	-	-	-	-	-	+	-	+	+	+	-	-	+	-	-
HU (12/13)	+	+	+	+	+	+	+	+	+	+	+	-	+	+	+	+	+
MD (0/13)	-	-	-	-	-	-	-	-	-	-	-	-	-	-	+	-	-
ME (3/13)	-	-	-	-	-	-	+	+	-	-	-	+	-	+	-	+	-
RO (7/13)	-	+	+	+	-	+	-	+	-	-	+	+	-	+	+	-	-
SI (13/13)	+	+	+	+	+	+	+	+	+	+	+	+	+	+	+	+	+
SK (10/13)	+	+	+	+	-	+	+	+	-	+	+	-	+	-	-	-	+
SRB (13/13)	+	+	+	+	+	+	+	+	+	+	+	+	+	+	+	+	+
UA (4/13)	-	-	+	+	-	-	-	-	-	-	-	+	+	+	+	-	-
ATTENDANCE Countries:	8	8	9	9	5	7	7	8	6	8	8	9	8	6	12	9	8
DG REGIO (7/13)	+	+	+	-	-	+	+M	-	+	-	+	-	-	-	-	+	+
DG MOVE (7/13)	+	+	+	-	+	+	+M	-	-	-	+	-	-	-	-	-	-
DG NEAR	-	-	-	-	-	-	-	-	-	-	-	-	-	+	-	-	-