

# Development of the Sofia Metro System

Petar Benov

Ministry of Transport, Information Technology and Communications

15<sup>th</sup> May 2018

Bled, Slovenia



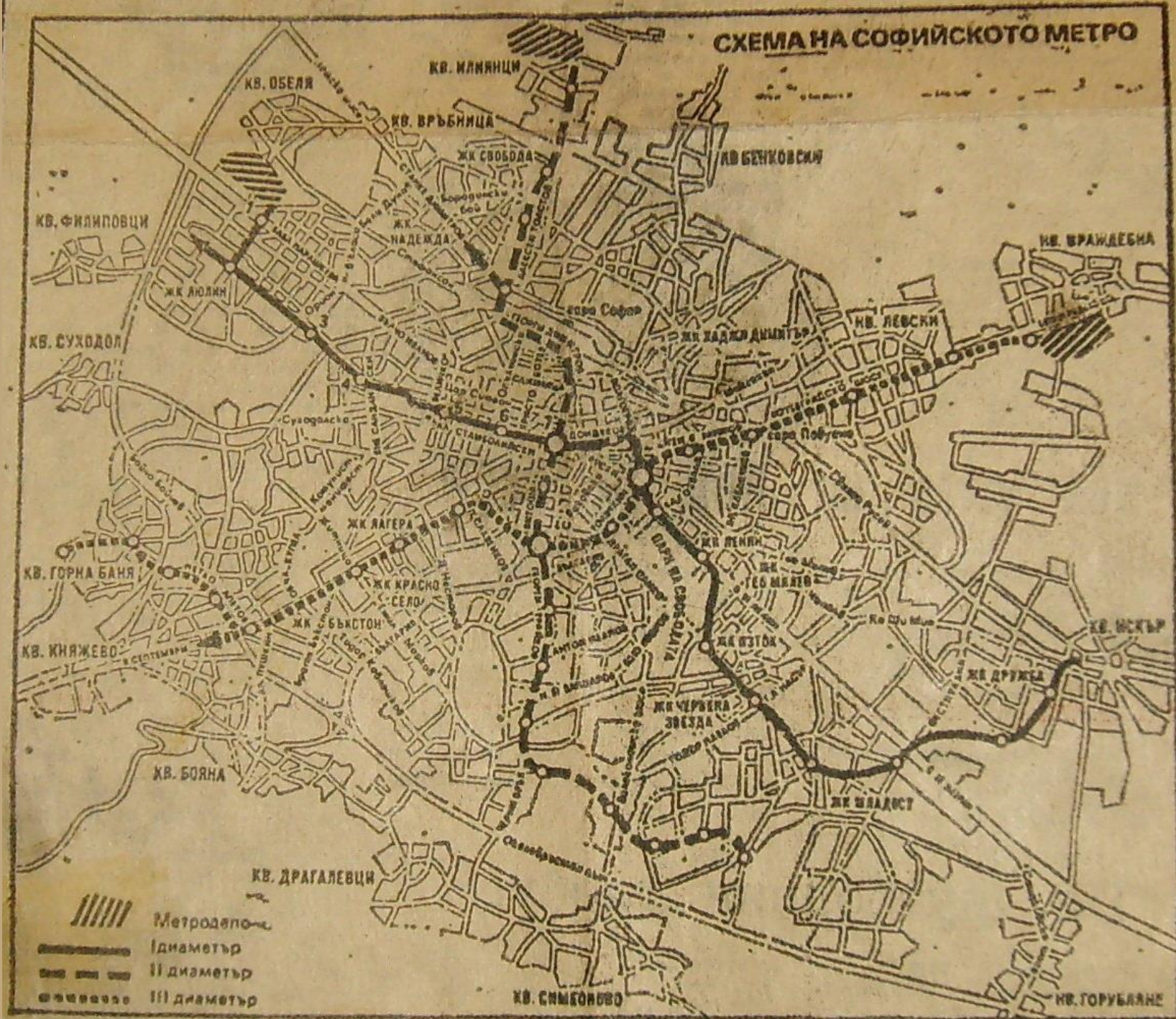
# The History

First studies – 1960s

First technical report – 1972

First construction works –  
1978 – end of 1980s

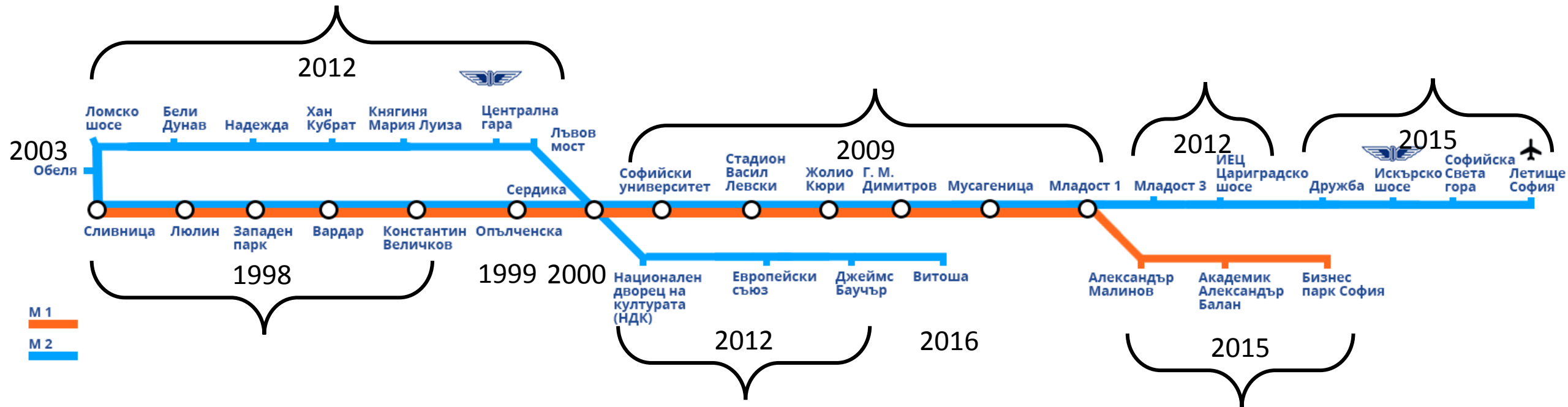
Renewed construction –  
1995



# Main parameters of the Metro in Sofia according to the Technical-economic report

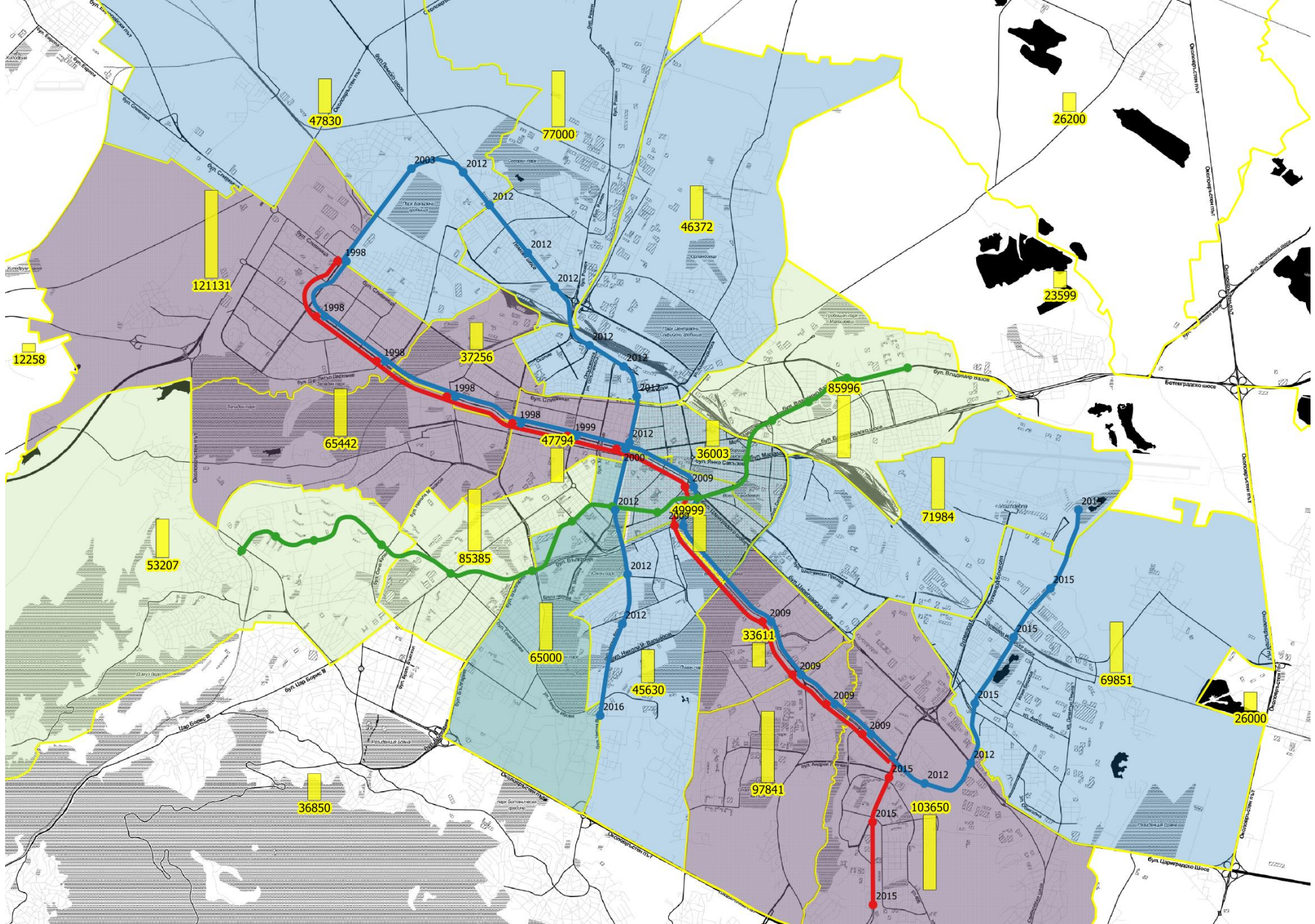
Number of lines/diameters/	- 3 /some of the lines branching in the suburbs/
Total length of the lines	- 65 km with 63 metro stations, including:
<ul style="list-style-type: none"> <li>- Line 1/Lyulin - Mladost/</li> <li>- Line 2 /Nadezhda - Lozenets/</li> <li>- Line 3 /light metro /Knyazhevo – Levski/</li> </ul>	<ul style="list-style-type: none"> <li>- 29 km with 23 stations</li> <li>- 17 km with 17 stations</li> <li>- 19 km with 23 stations</li> </ul>
Average distance between the stations	- 1000 m.
Transport capacity	- 50 thousand passengers/hour
Operational speed	- 90 km/h
Rail gauge	- 1435 mm
Power supply- DC through a contact rail	- 825 V
Minimal Headway	- 90 seconds
Passengers carried per day	- 1.2 mln. passengers/day
Share in the Public transport system	- 68 % /with the exstensions/

# Development of Line 1 and Line 2



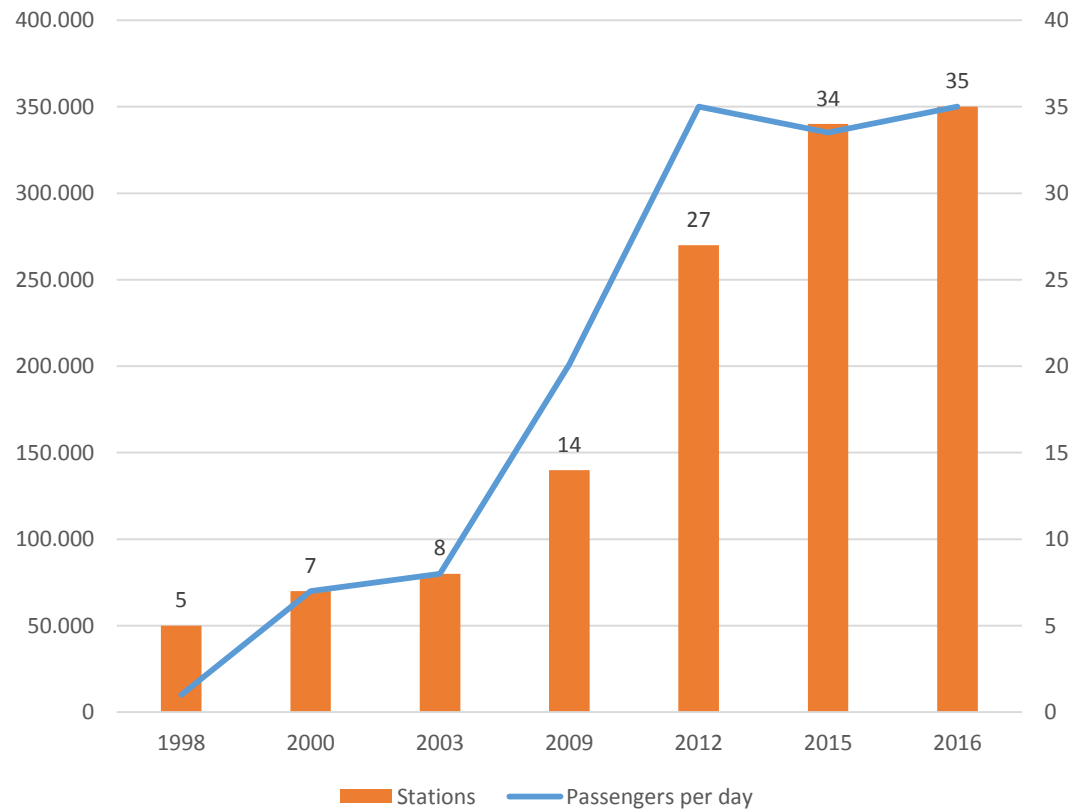
# Sofia Metro Development and Planning 2018



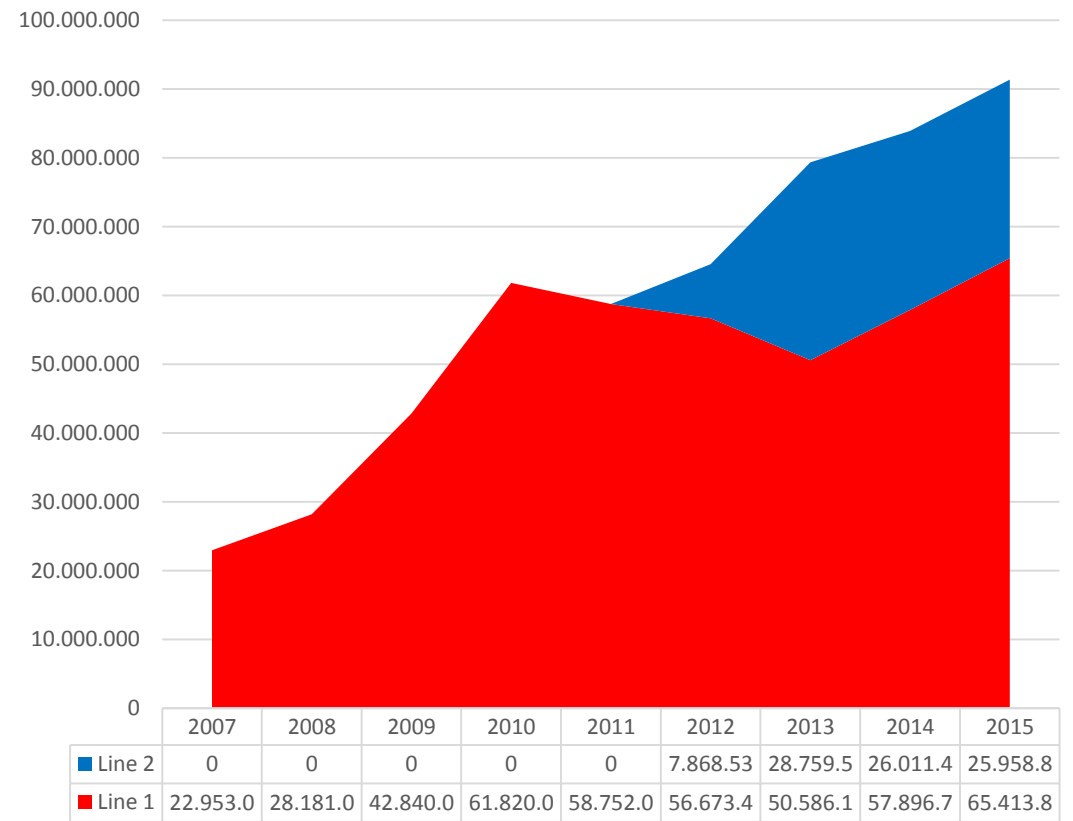


# Statistics

## Daily Traffic



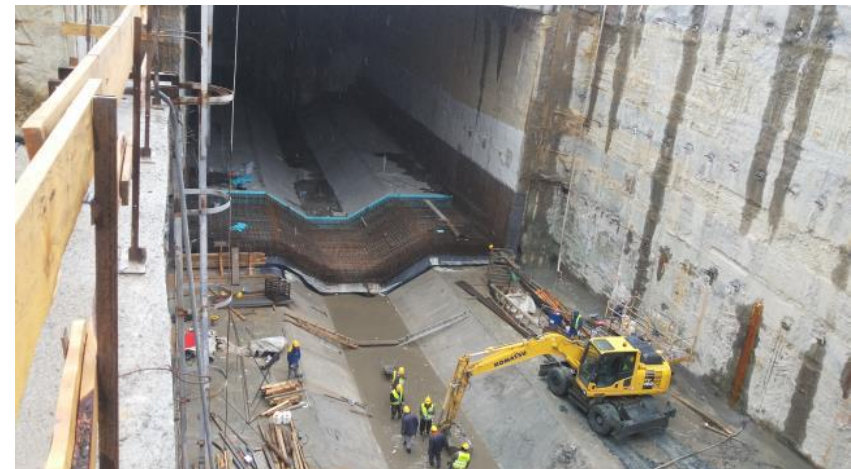
## Passenger per year



# Sofia Metro Extension Project

Construction of sections under OP “Transport and Transport infrastructure” 2014 - 2020

- Section “MS James Bourchier – MS Vitosha” – length 1,3 km and 1 metro station – implemented in 2016
- L3, Stage 1 – Section: “Vl. Vazov blvd. – Centre – Krasno selo” – length 8 km and 8 metro stations, metro depot and 20 rolling stocks “Siemens”, deadline – autumn of 2019
- L3, Stage 2 – Section “Krasno selo – Ovcha kupel RD - railway line Sofia-Pernik”, length 4 km and 4 metro stations, deadline – end of 2019





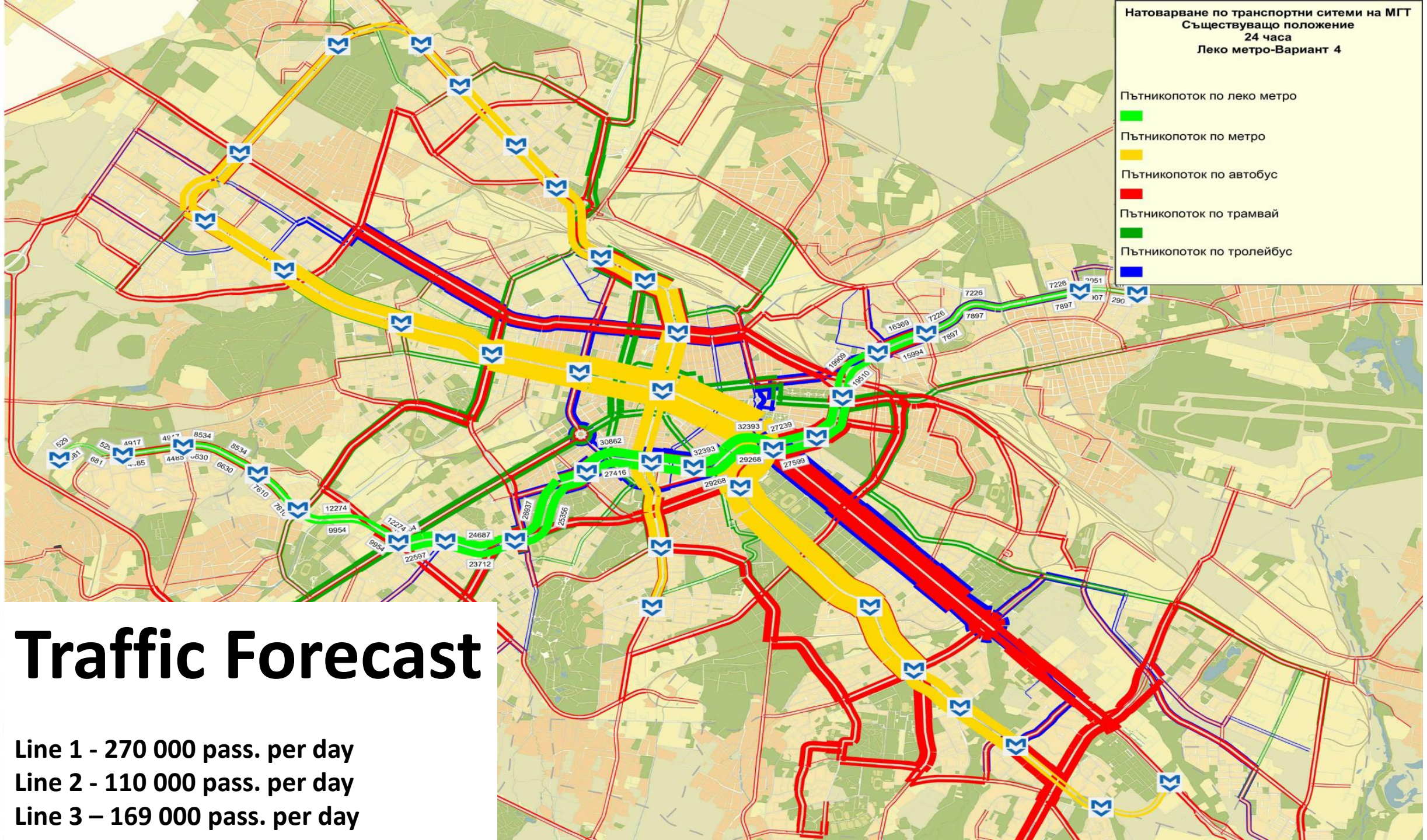
# Budget

Financing sources	Cost in mln. euro	Share of the total cost (in%)	Cost in mln. euro	Share of the total cost (in%)
	<b>Stage I</b>		<b>Stage II</b>	
EU funding	273.52	~69 %	57.26	~56 %
National co-financing	48.27	~12 %	11.28	~11 %
Self-financing SM	76.39	~19 %	33.41	~33 %
Total eligible costs	398.18	100.00%	101.95	100.00%

# Public Benefits

Public benefits	2016 Line 1 and Line 2	2020 Stage I and II from Line 3
Length of lines	40km/35MS	52km/4
Number of carried passengers /thousand per day	340	500
High carriage capacity	50 thousand passengers/hour	
High travel speed	Up to 80 km/h	
Duration of traveling time to the centre of the city	10-18 мин.	10-16 мин.
Share in the system of mass public transport	32%	over 45%
Traffic reduction	25%	30%
Reduction of traffic accidents	18%	25%
Connections with national railway network	2	3
Connections with tram lines	10	14
Connections with bus and trolley lines	37	over 55
Number of passengers at Sofia airport	4,5 mln passengers	over 6,5 mln passengers
Reduction of noxious gasses (thousand tons/year) including aerosols, noxious oxides and fine dust particles	79 thousand/tons/year	90 thousand/tons/year
Saved time for the citizens of Sofia (thousand hours per day)	115	160





# Sofia Central Railway Station Rehabilitation

- Financial source – Operational Programme on Transport 2007 – 2013
- Budget – about 30 mln. euro (including EU funding – about 22 mln. Euro)
- Start of construction – September 2013
- End of construction – November 2016
- A full reconstruction and rehabilitation of the building and areas surrounding platforms are implemented.



# Scope of the implemented activities

- Architectural
- Interior and furniture
- electrical installations
- Equipment and facilities
- Landscaping and road works
- Unified trains management center
- Centenary and related equipment



# Central Bus Station

- Opened in 2004
- Total covered space of 7 173 m<sup>2</sup>
- Waiting area of 1 500 m<sup>2</sup>
- Capacity of 2,250 passengers
- 50 bus stops
- International and domestic routes serviced



Thank you for your  
attention!

