



# Moving extraordinary loads

Patricija Butala, Comark



Interreg  
Danube Region



Co-funded by  
the European Union





# ABOUT US

Founded 1992, family company.

Specialist for project cargo logistics.

**Locations COMARK – Project Logistics**

- Ljubljana and Koper, Slovenia
- Rijeka, Croatia
- Belgrade, Serbia

**Locations PAKLOG – Industrial packing**

- Črnomelj, Slovenia
- Zagreb, Croatia





# HEAVY & OVERSIZED TRANSPORT

- strict regulations
- road permits
- static bridge calculations
- police and certified escort vehicles





# WHY OVERSIZED CARGO IS COMPLEX IN EUROPE

- Challenges above 100 tons
- Permits often denied (AT & DE)
- Old bridges, narrow roads
- Strict safety limits

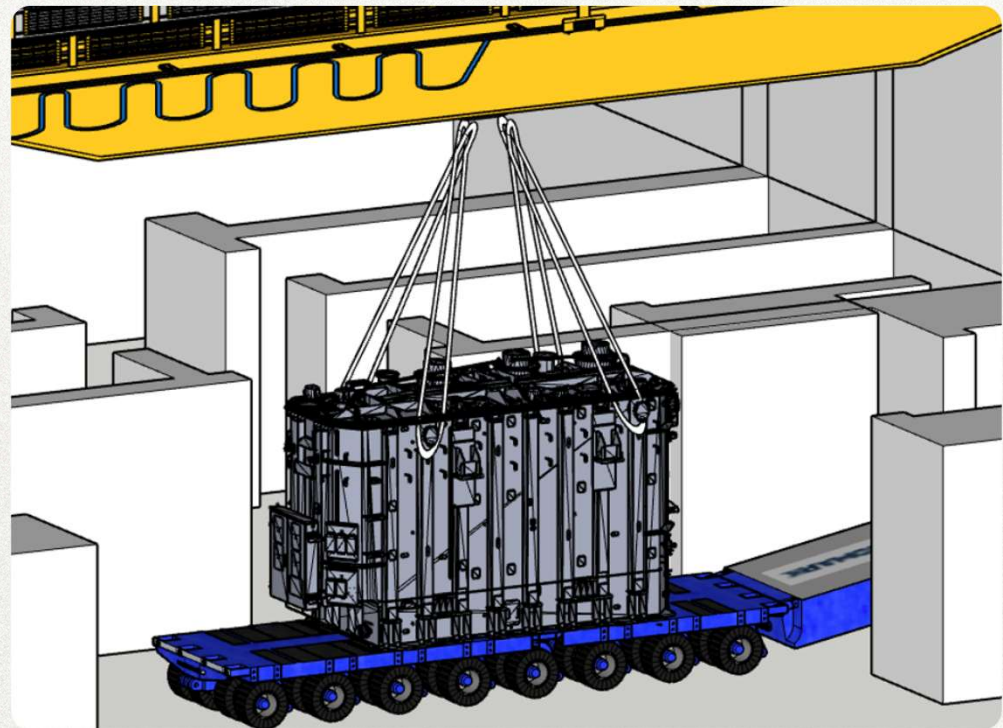




# MULTIMODAL PROJECT



- 2pcs 110-ton transformers
- **FROM:** Gebze, Turkey
- **TO** Tauernmoos, AT
- Hydropower plant
- 2.500 meters above sea level

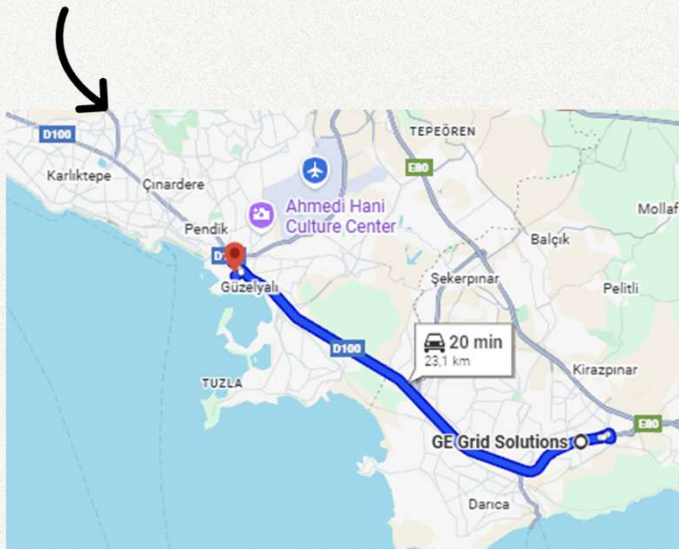




# MULTIMODAL PROJECT



Truck → Vessel → Rail → Truck → SPMT → Final positioning inside mountain



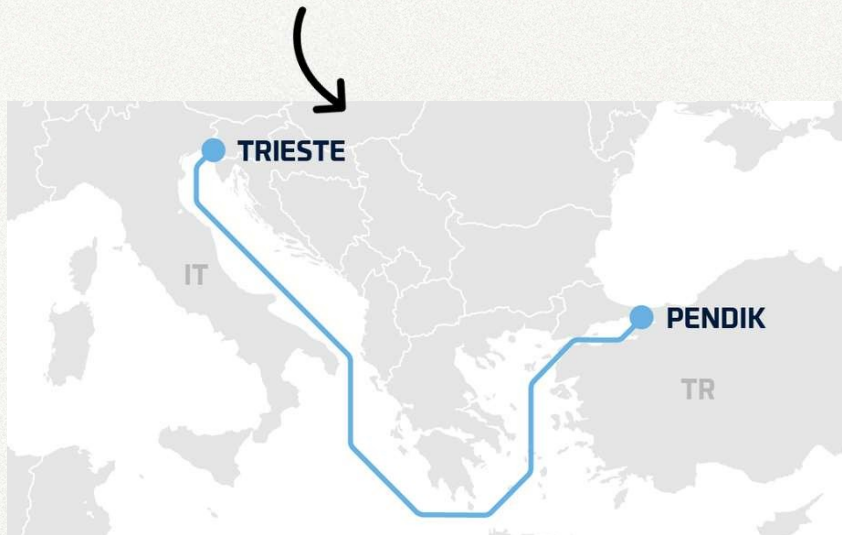
**Heavy low-bed trailer**  
Gebze - Pendik (Turkey)





# MULTIMODAL PROJECT

Truck → Vessel → Rail → Truck → SPMT → Final positioning inside mountain



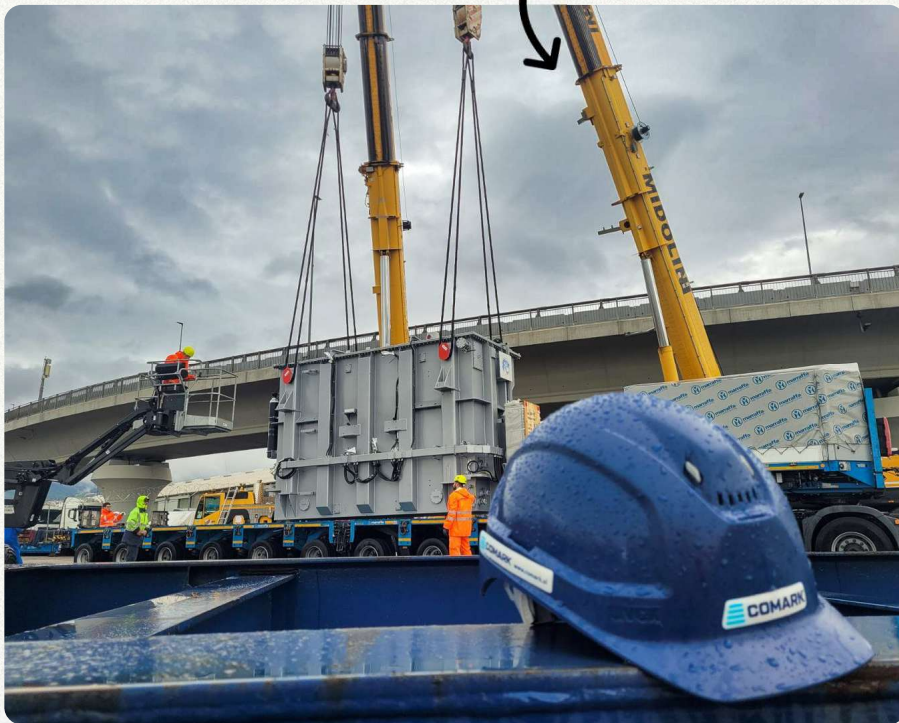
RORO vessel Pendik-Trieste





# MULTIMODAL PROJECT

Truck → Vessel → Rail → Truck → SPMT → Final positioning inside mountain



Rail Transport — Trieste → Maishofen

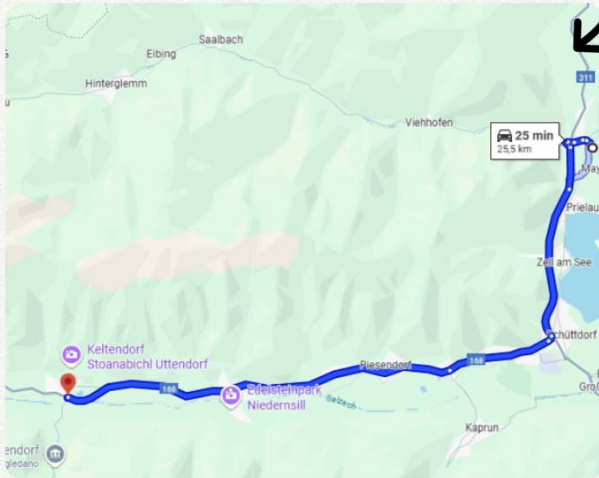




# MULTIMODAL PROJECT



Truck → Vessel → Rail → Truck → SPMT → Final positioning inside mountain



Road transport from Mashofen rail station to Kraftwerk Uttendorf





# MULTIMODAL PROJECT





# MULTIMODAL PROJECT



Truck → Vessel → Rail → Truck → SPMT → [Final positioning inside mountain](#)



SPMT — a Self-Propelled Modular Transporter







**COMARK@COMARK.SI**



Follow **Comark - Project Logistics** on **LinkedIn**