

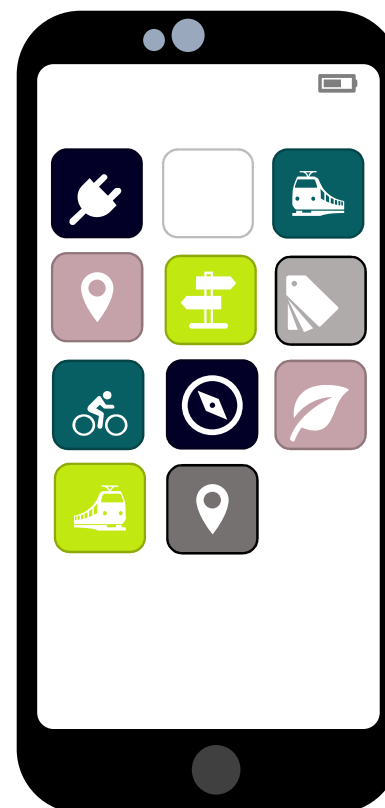
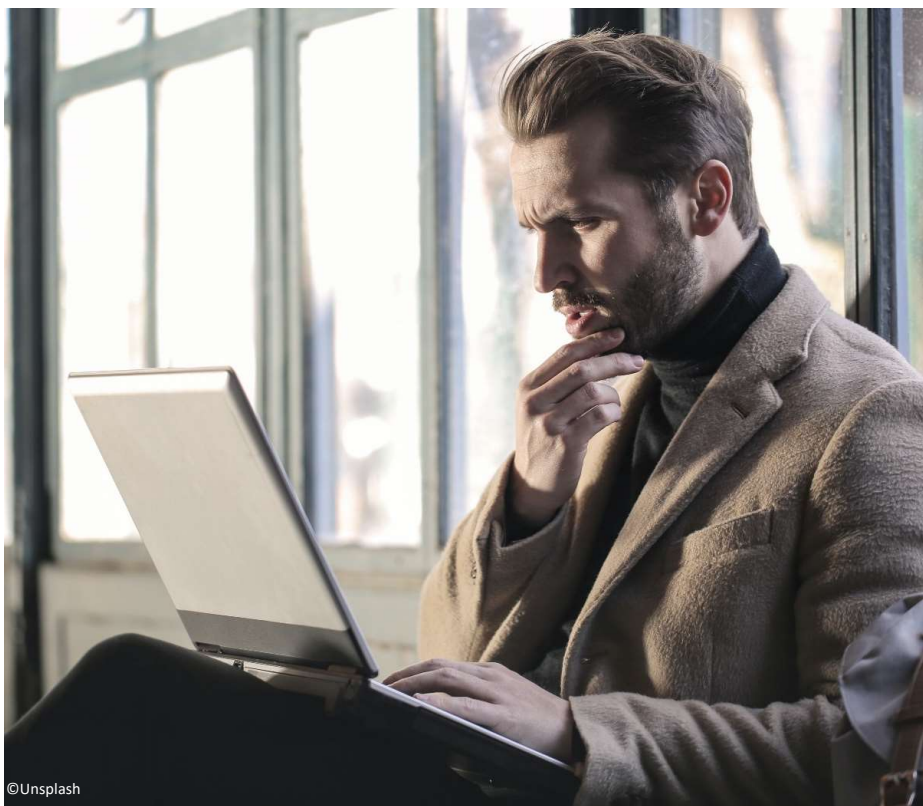
# Cross-border travel enabled by OJP

OJP4Danube and LinkingAlps

3<sup>rd</sup> December 2024 | Danube Region Transport Days



# Cross-border journey planning – The reality

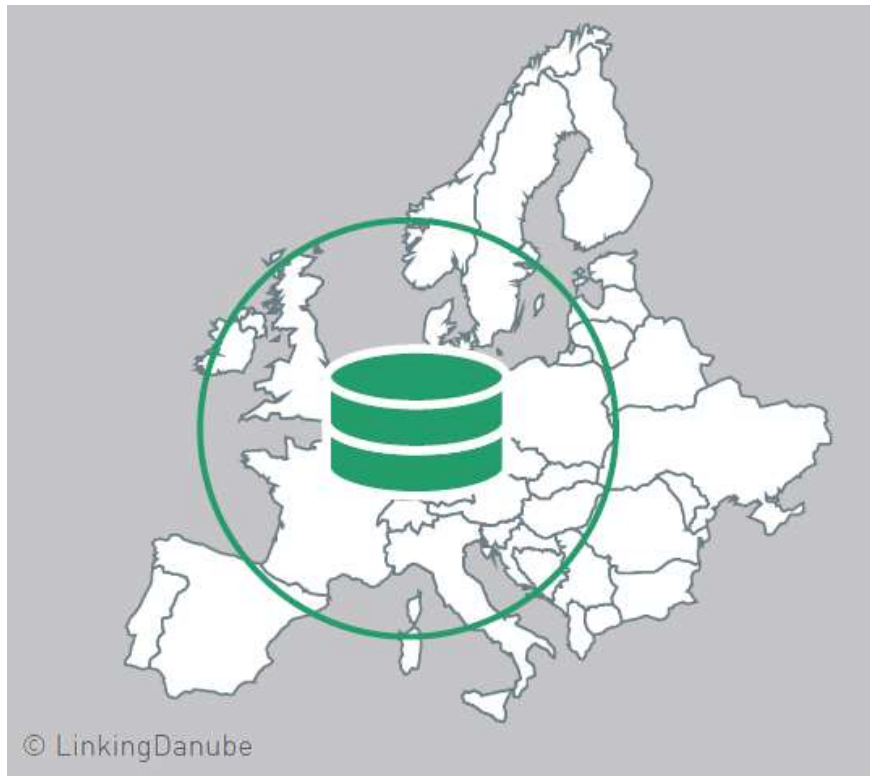


# Cross-border journey planning – The vision





# „Traditional approach“



Traditional data exchange mechanisms and central data integration:

- Data is „physically exchanged“ and stored in one central database („pooling“)
- Data is stored, processed and maintained within this central data base

+

Data is stored centrally and can be easily linked on a technical level

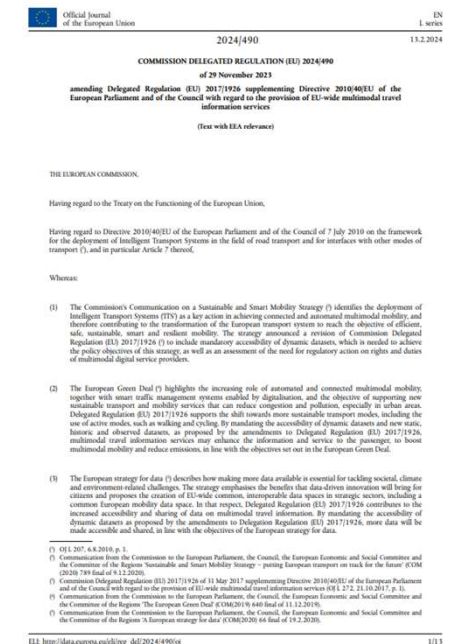
Good performance due to centralisation of data

-

Data owners have few or no sovereignty over their data, data interpretation and data updates

# Changes in the framework 2017

- **New European Legislation on Multimodal Travel Information Services (MMTIS)**
- Delegated Regulation 2017/1926 Provision of EU wide multimodal travel information services
- **(revised in February 2024 – Delegated Regulation 2024/490)**
- → new obligations and rules for the data provision and accessibility for transport operators and service providers



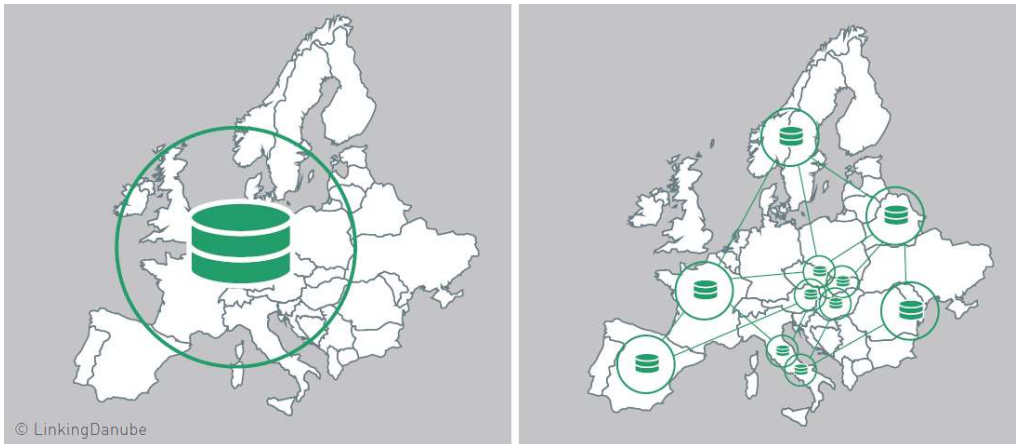
# Changes in the framework 2017

- Publishing of CEN Standard for “linking of services”
- CEN/TS 177118 Public Transport – Open API for distributed journey planning (2017) („OJP Standard“)
- Universal interface for service exchange



# Linking of Services approach

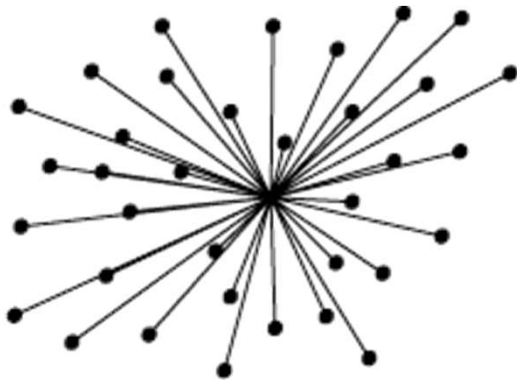
- **Providing routing results ...**
- ... for a **combined** cross-border journey planning ...
- ... **without** the need to exchange and maintain the respective data ... on a centralised platform.



# Linking of Services approach

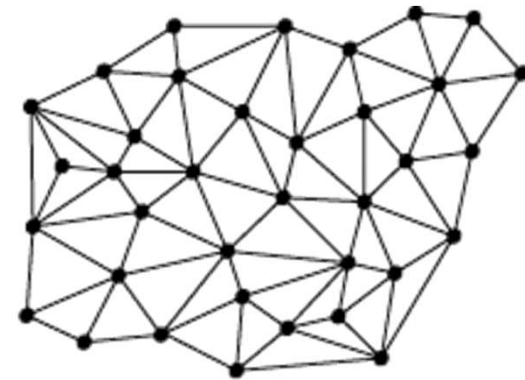
From

*One serves All*



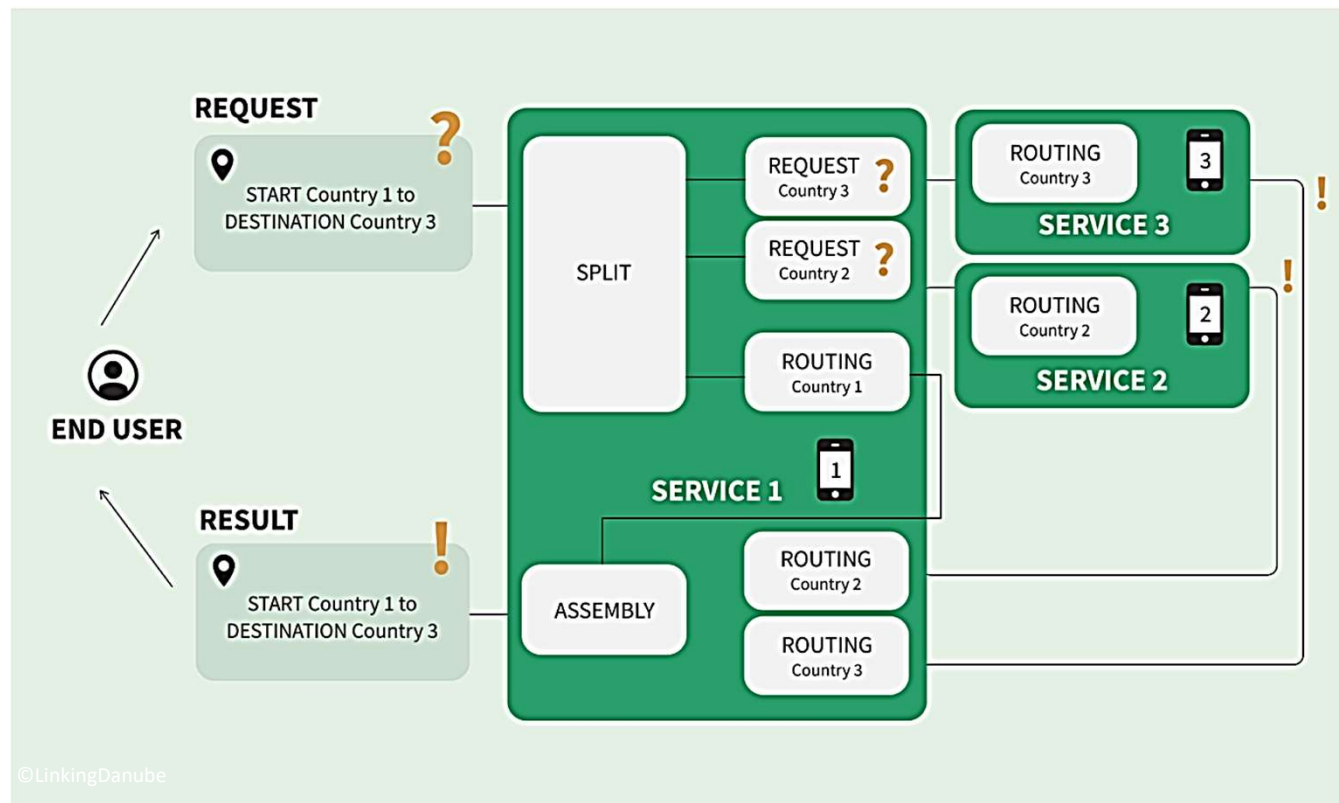
Towards

*All serve One*

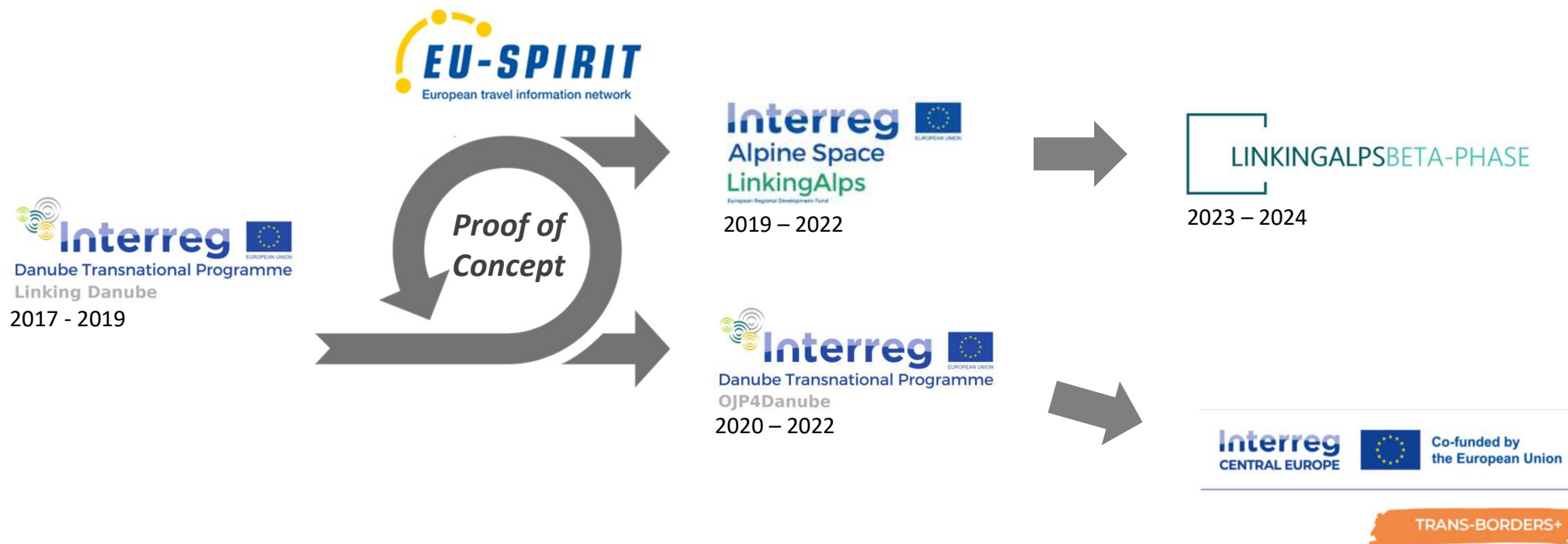




# Linking of Services approach



# Lead projects and initiatives



# The LinkingAlps Story ...

# Overview and Goals

INTERREG Alpine Space Program  
2019 – 2022

- Cross-border routing
- No data exchange -> linking of individual systems
- Routing between AT-CH-IT-SI -> pilot version
- Organisational solution for an operations

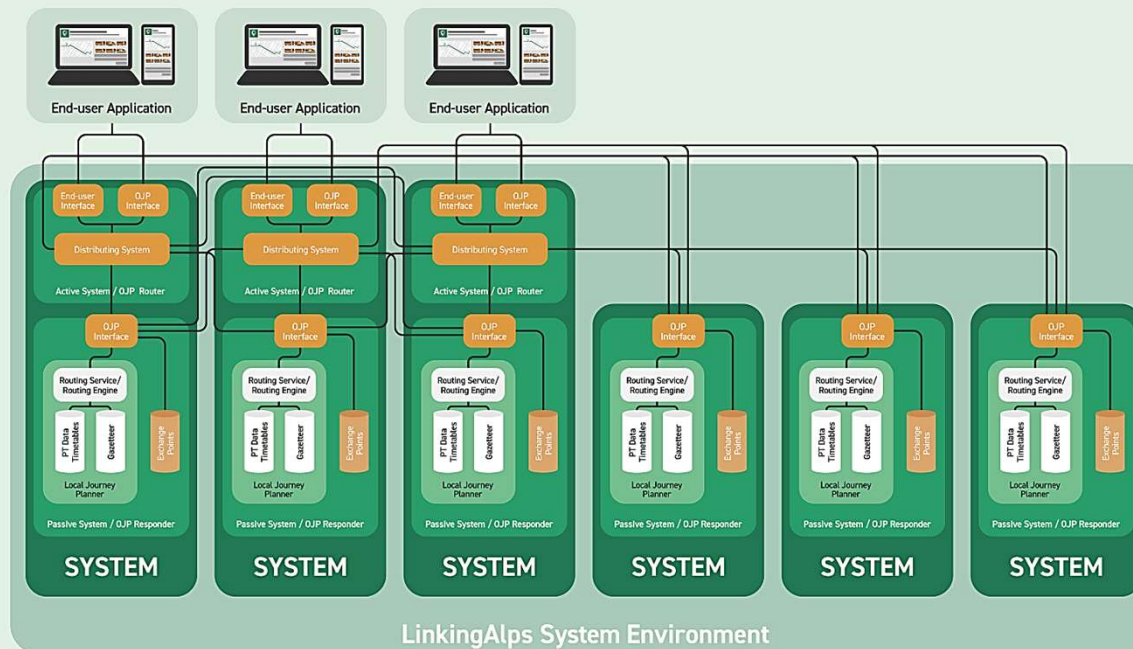


14 Project Partners

6 Alpine Space Countries

6 Existing travel information services/ journey planners

# LinkingAlps system architecture





## Next steps – LinkingAlps Beta-Phase

---

- Further development of the LinkingAlps service 2023/2024
- Final transfer to operations
  - Improvement of quality
  - Performance
  - Multilanguage service provision
- Scaling up & down > Adaptation of the solution to integrate regional, local mobility systems at a low threshold
- Soon available in the Apps “Südtirol Mobil” and SiMO!