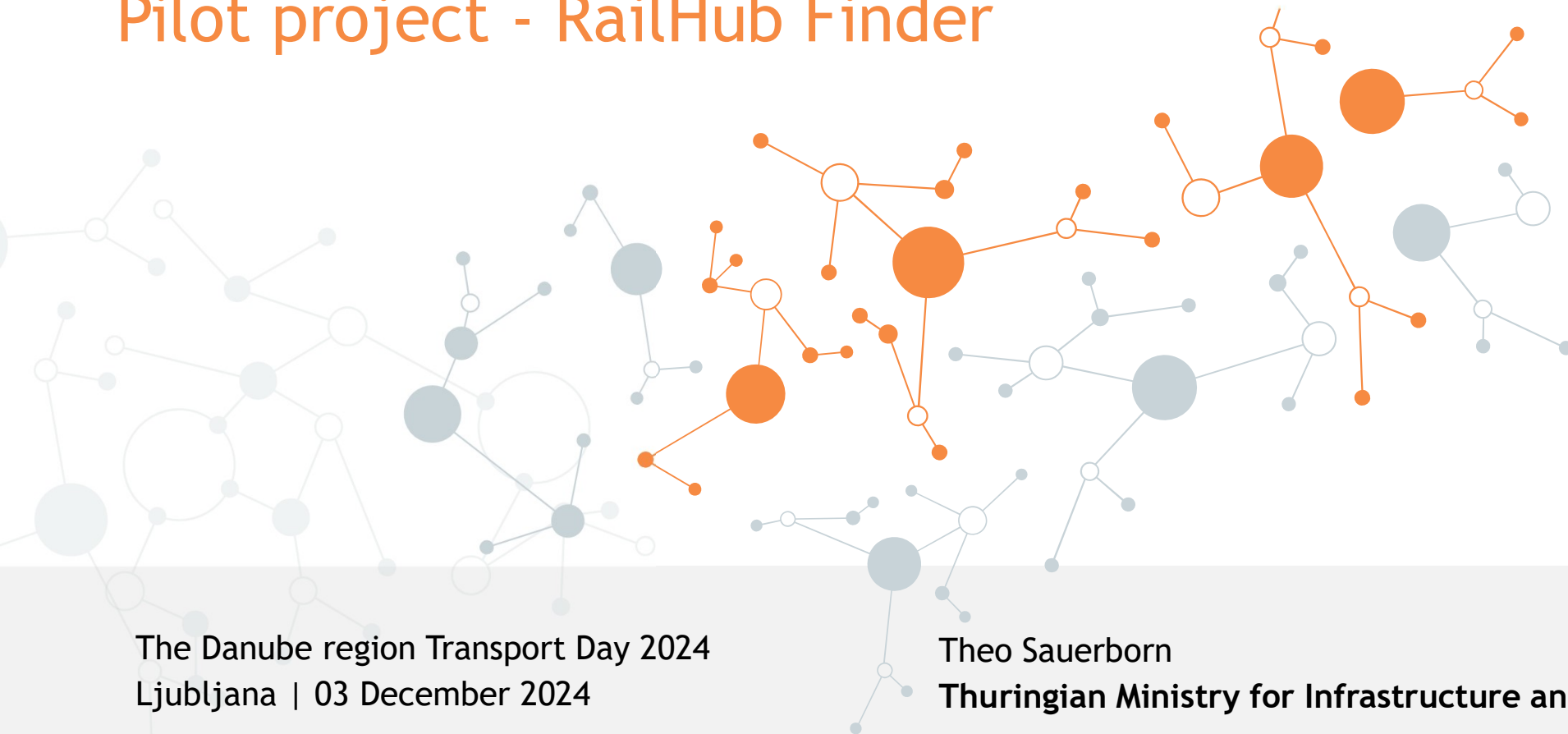


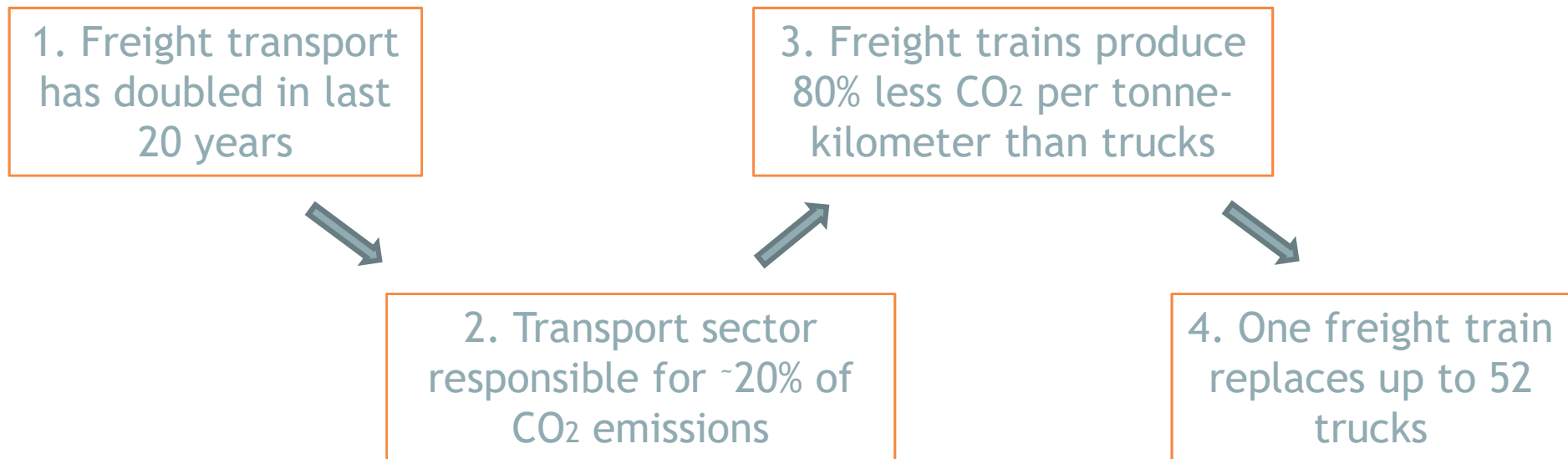
# Rail4Regions & Pilot project - RailHub Finder



The Danube region Transport Day 2024  
Ljubljana | 03 December 2024

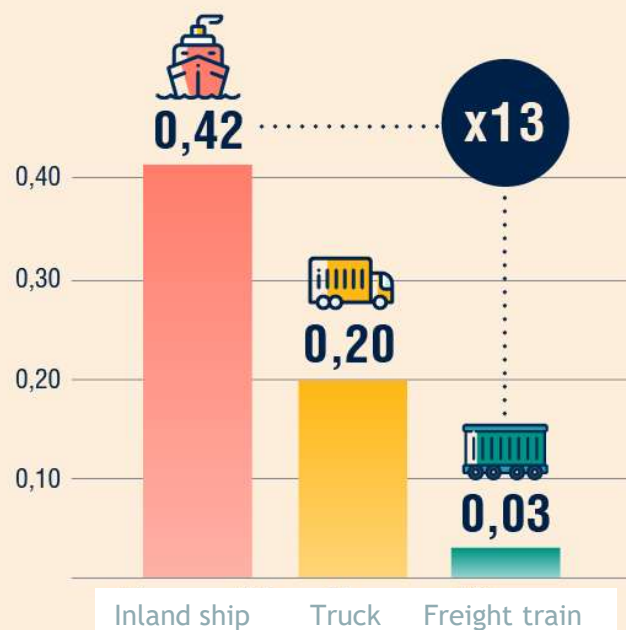
Theo Sauerborn  
Thuringian Ministry for Infrastructure and Agriculture

# Some Facts about rail freight (in Germany)

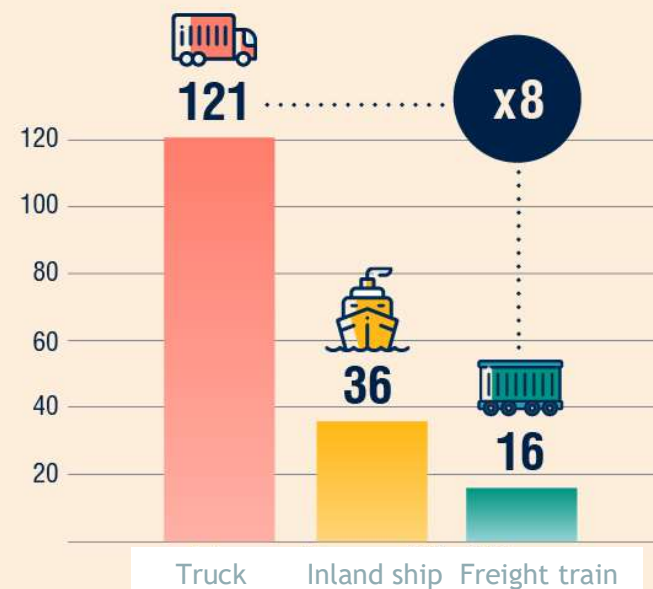


# Emissions from freight transport


Nitrogen oxides  
in grams per tonne-kilometer, 2022



Greenhouse gases  
in grams per tonne-kilometer, 2022



Quelle: Allianz pro Schiene | 01/2024 | auf Basis von Umweltbundesamt

Lizenz:  Nutzung frei für redaktionelle Zwecke unter Nennung von Allianz pro Schiene

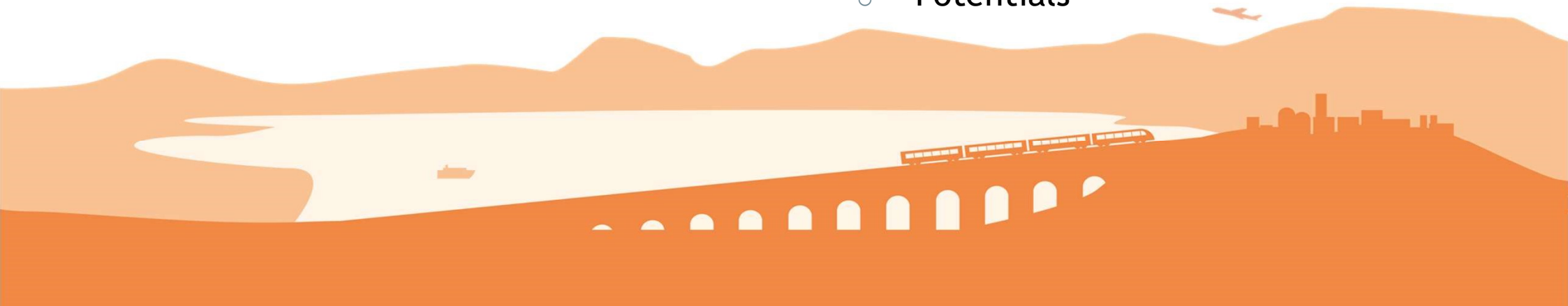
# Table of Contents

## **Rail4Regions**

- Key data: Rail4Regions
- Challenge and overall objective
- Project partnerships
- Project Progress & Workpackages

## **RailHub Finder Pilot Project**

- Development
- Inspiration
- Mockup RailHub Finder
- Additional Functions
- Challenge
- Potentials



# KEY DATA: RAIL4REGIONS

## Project acronym - name:

Rail4Regions - Enhancement of spatial and transport planning capacities in the promotion of the accessibility of the rail freight transport network and regional development

## Programme priority:

Interreg CE P3 - Cooperating for a better connected Central Europe

## Specific objective:

SO3.1 - Improving transport connections of rural and peripheral regions in Central Europe

**Focus regions:** Rural areas, Peripheral regions, Structurally weaker regions

**Duration:** Feb. 2023 - Jan. 2026

# CHALLENGE AND OVERALL OBJECTIVE

## Challenges

EU Green Deal:  
reduction of transport  
sector's carbon footprint

Central Europe's dense  
network of branch and  
feeder lines  
inadequately used

TA 2030: Sustainable  
digital and physical  
connectivity of places

Lack of tools for regional  
planners to enhance rail  
access of industrial  
areas (loading facilities)



© Ante Klečina

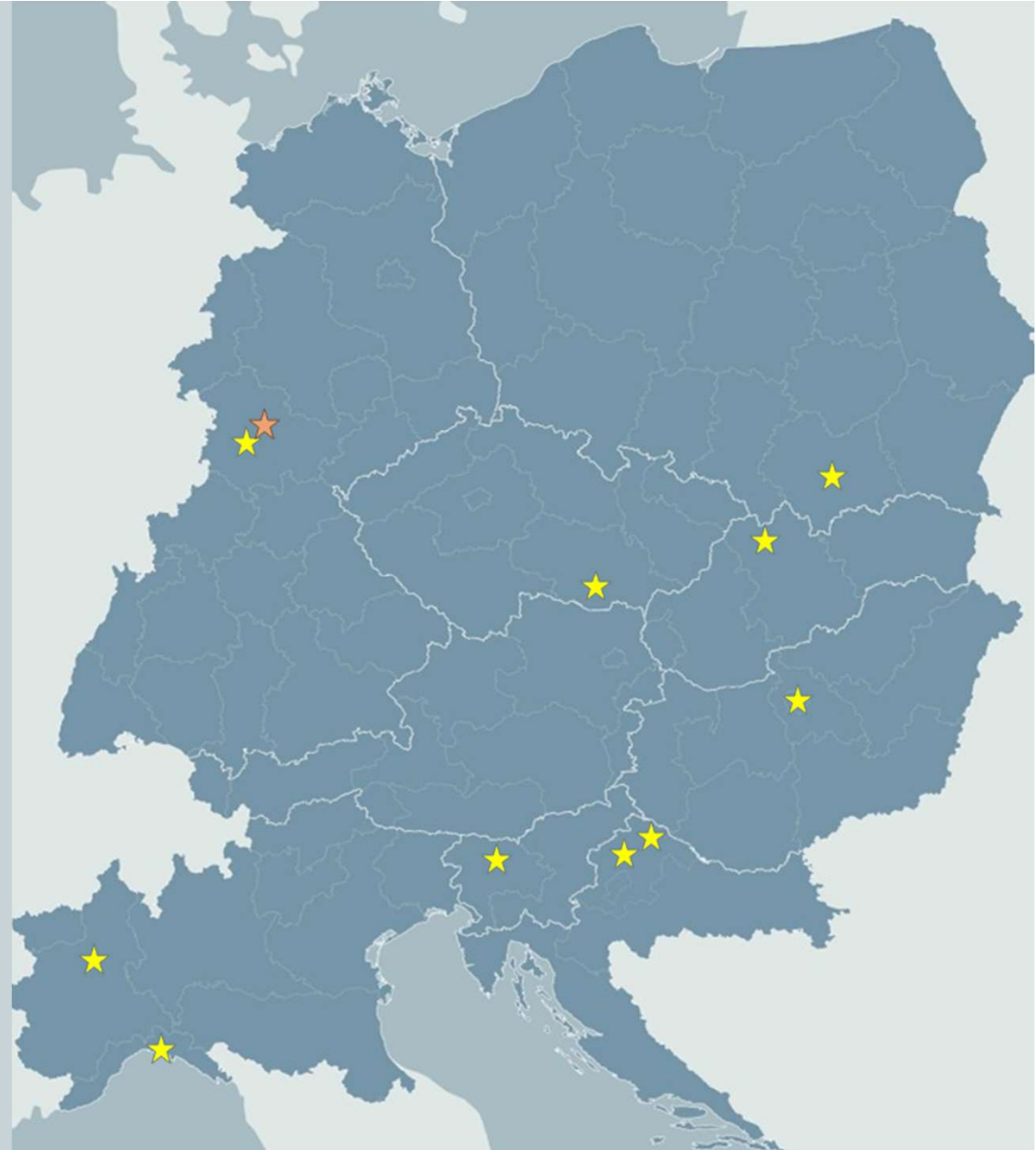
# Project Partnership

---

Regional and local public authorities  
(DE, HR, PL, IT, CZ)

Railway and infrastructure operators  
(HU, SK, DE, SI)

Research institutions (DE, HR, SI, IT)





# PROJECT PROGRESS & WORKPACKAGES

## WP 1 (Elaborate)

- Case studies (rail- suitable goods yet transported by road)
- Stakeholder workshops & networking
- Assessment of transport benchmarks
- White Paper on Rail Freight Access for Rural areas

## WP 2 (Test)

- Capitalisation of available concepts to draft solutions
- Pilot actions on loading points, branch/feeder lines, sidings, single waggon transport
- Joint assessment
- Presentation of upscalable solutions

Kickoff Feb.2023

Halftime October 2024



## WP2: FOUR TRANSNATIONAL WORK GROUPS

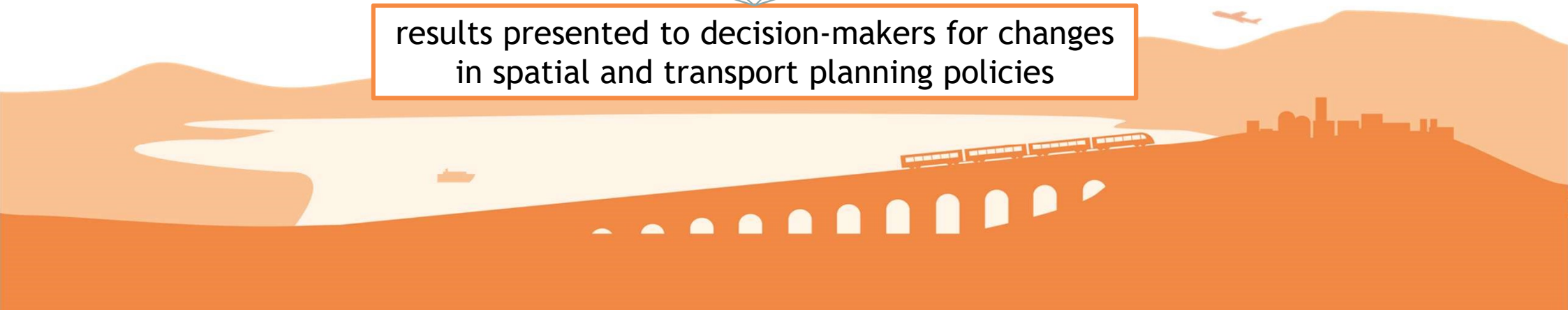
Industrial  
Sidings

Revitalization  
of branch and  
feeder lines

Single waggon  
transport

Toolbox for  
loading points

results presented to decision-makers for changes  
in spatial and transport planning policies



# PROCECT PROGRESS & WORKPACKAGES

## WP 1 (Elaborate)

- Case studies (rail- suitable goods yet transported by road)
- Stakeholder workshops & networking
- Assessment of transport benchmarks
- Output: White Paper on Rail Freight Access for Rural areas

## WP 2 (Test)

- Capitalisation of available concepts to draft solutions
- Pilot actions on loading points, branch/feeder lines, sidings, single waggon transport
- Joint assessment
- Presentation of upscalable solutions

## WP 3 (Upscale)

- Stakeholder capacity building workshops
- Drafting and finalisation of the action plan
- Draft decision for adoption

Kickoff Feb.2023

Halftime October 2024

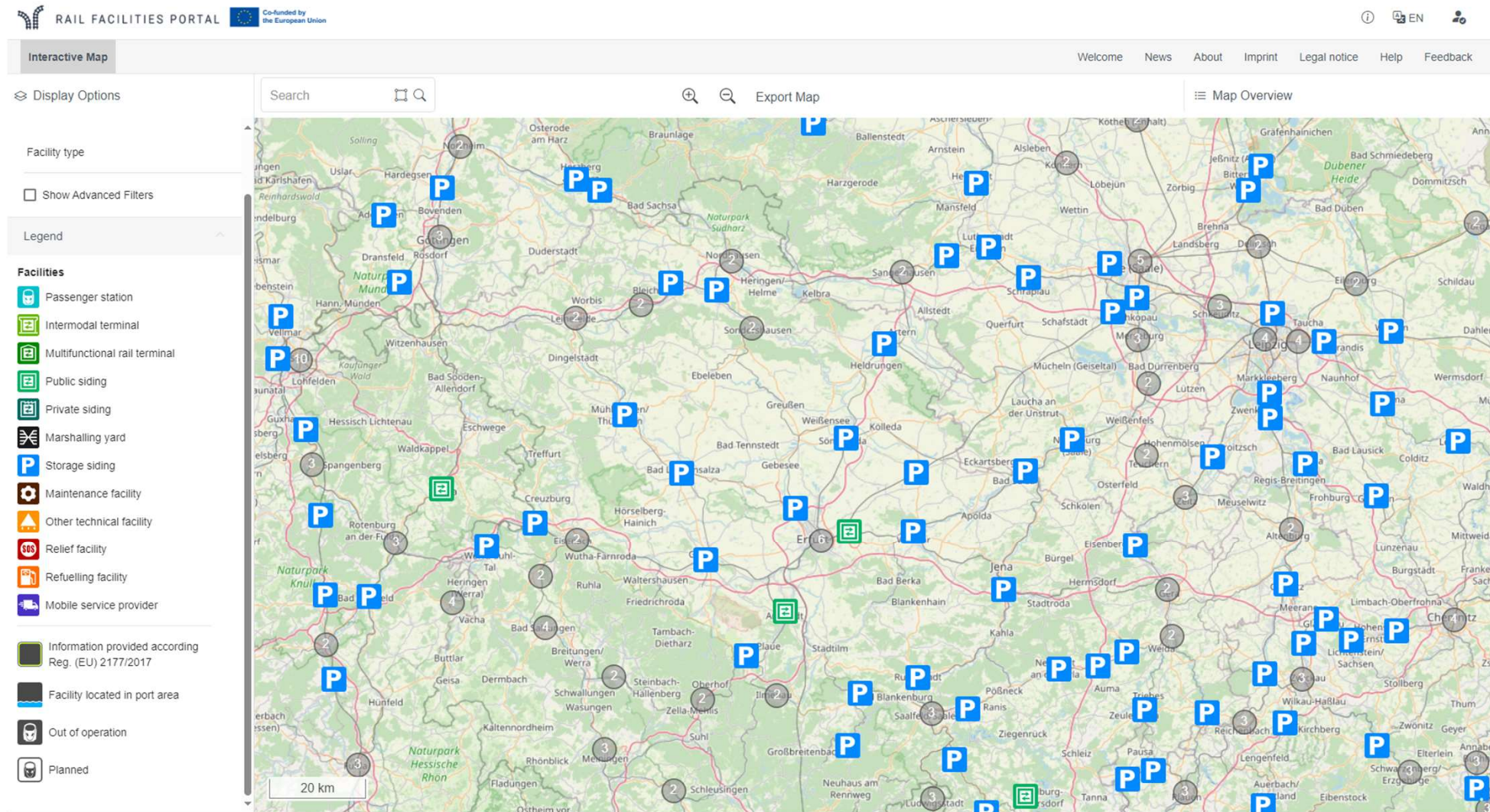
Completion Jan. 2026

# DEVELOPMENT OF THE TOOL “RAILHUB FINDER”

- Based on the results of work package 1
- Fast & cost-effective to implement
- Pilot phase on a smaller scale (Thuringia)
- Upscalable to European level
- Goal: Overview of a comprehensive network of all loading points, including metadata, to bring many goods onto the railways
- Development: interactive viewer “RailHubFinder”
  - Website with integrated viewer
  - OSM base map and rail infrastructure
  - Location of loading points and economic activity
  - Detailed information about loading point (storage area, freight options, cranes, wagons, access, opening hours, etc.)

# INSPIRATION: RAIL FACILITIES PORTAL

Source: Rail Facilities Portal





# INSPIRATION: RAIL FACILITIES PORTAL

Source: Rail Facilities Portal

Vieselbach

EXPORT TO PDF SEND FEEDBACK CLOSE

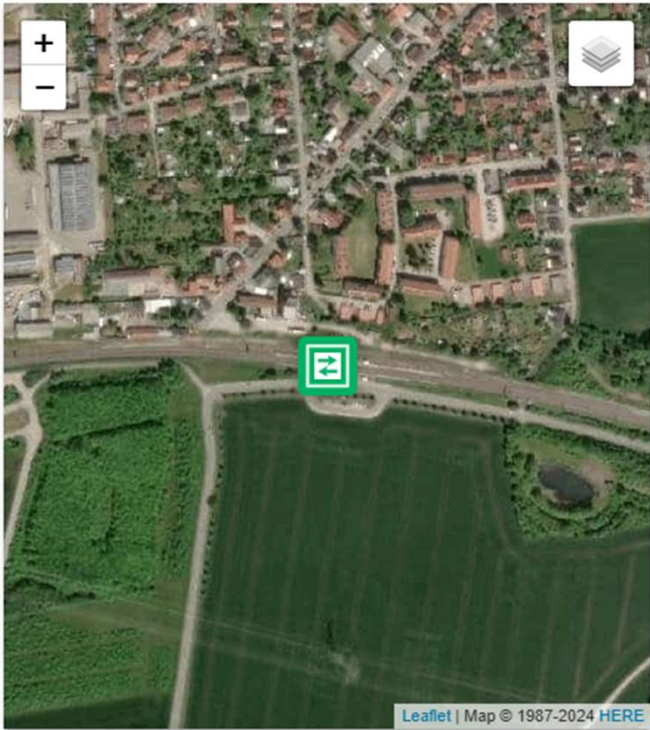
GENERAL INFORMATION SERVICES SF DESCRIPTION CHARGES ACCESS CONDITIONS CAPACITY ALLOCATION LINKS AND DOCUMENTS

### Introduction

Facility name:	Vieselbach
Facility type:	Public siding
Facility/operator exempted according Reg. (EU) 2017/2177, Art. 2:	No
Purpose of this SF description:	No data available
Facility located in:	Seaport: - Inland port: - Freight village: -
Presentation of the Service Facility:	No data available
Link where additional documents are published:	<a href="https://www.dbinfrago.com/web/...">https://www.dbinfrago.com/web/...</a>

### Service facility operator and owner

Facility operator:	DB InfraGO AG
UIC company code (RICS):	0080
Operator type:	Infrastructure manager



\* Parameter updated by Portal Administration Last updated: 2024-04-24 Main data source: DB Netz AG

Themen

Legende

Suchen

Werkzeuge


Weitere Portale

RailHub Finder

Source: Thüringen Viewer

Suche

Public siding:  
Vieselbach



Click for site plan

General information

Facility type: ...

Facility Operator: ...

Operator: ...

Website Link ...

Service at facility

Location

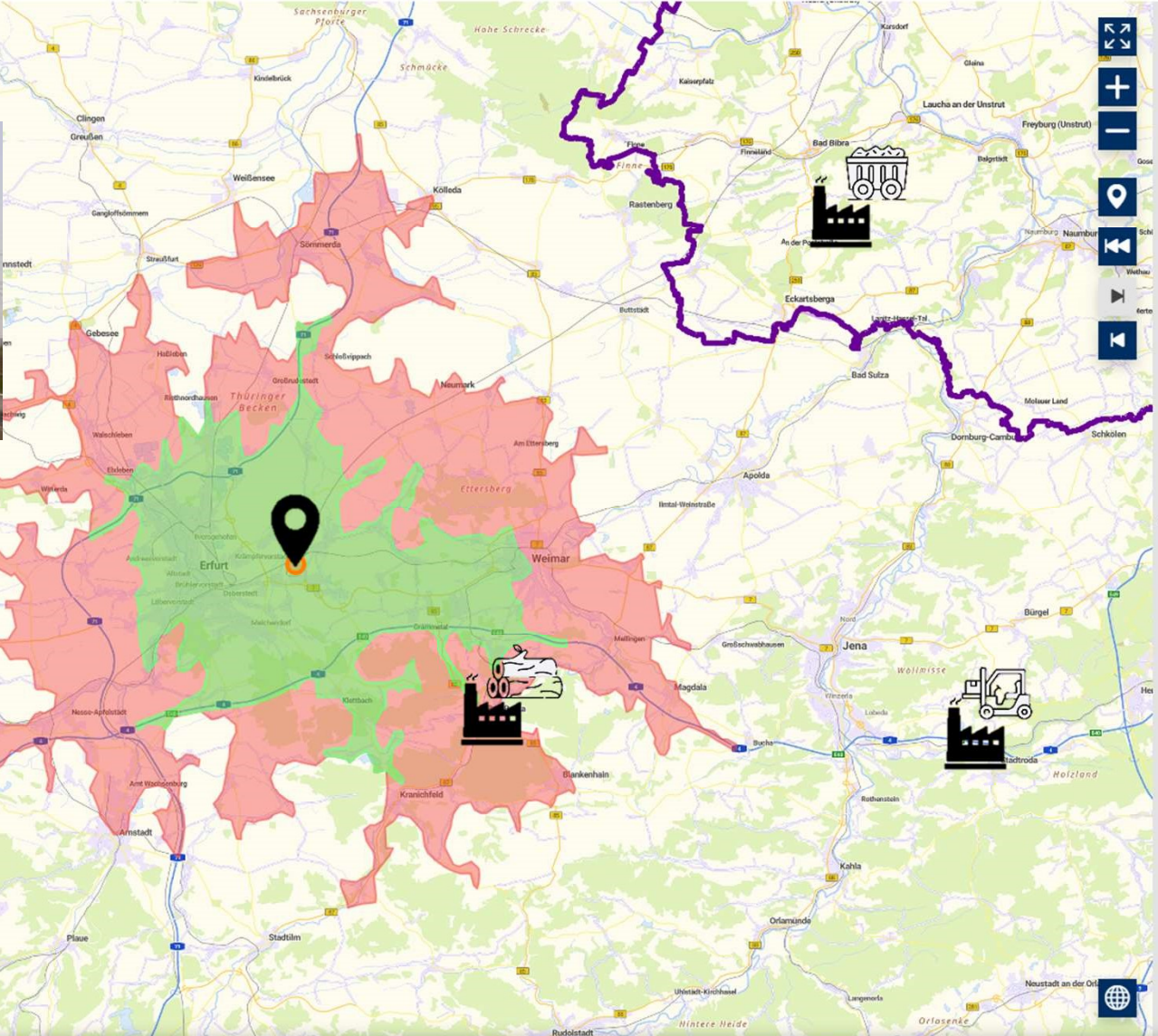
Opening times

Infrastructure

Environmental restrictions

Facility infrastructure

Legal requierments



Routing

Routenplanung

Erreichbarkeit

Startpunkt

Suchen Sie einen Ort oder fügen Sie einen Punkt durch Klick in die Karte hinzu

648645.5658888335, 5650478.021620666

Optimierung nach

Erreichbarkeit nach Zeit

Maximale Reisedauer

1 min 45 min 180 min

Intervall

3 min 30 min 30 min

Verkehrswege vermeiden

Berechnen

Legende

45 min

30 min

Herunterladen

Format

GEOJSON

Dateiname

Bitte Dateinamen angeben

Ergebnis speichern

Maßstab

1 : 250000

5 km

© GDI-Th | © GeoBasis-DE / BKG 2024

dl-de/by-2-0

Datenschutz

Version 2.40.1-1.0.0

Kontakt

Impressum

Hilfe-Video

Barrierefreiheit

Nutzungshinweise



# ADDITIONAL FUNCTION: ROUTING

Source: Thüringen Viewer

Themen | Legende | Suchen | Werkzeuge | Weitere Portale | Thüringen Viewer

Suche

Routing

Routenplanung | Erreichbarkeit

Startpunkt  
Suchen Sie einen Ort oder fügen Sie einen Punkt durch Klick in die Karte hinzu

648645.565888335, 5650478.021620666

Optimierung nach  
Erreichbarkeit nach Zeit

Maximale Reisedauer  
1 min 45 min 180 min

Intervall  
3 min 30 min 30 min

> Verkehrswege vermeiden

Berechnen

Legende  
45 min  
30 min

Herunterladen

Format  
GEOJSON

Dateiname  
Bitte Dateinamen angeben

Ergebnis speichern

© GDI-Th | © GeoBasis-DE / BKG 2024 | dl-de/by-2.0 | Datenschutz | Version 2.40.1-1.0.0

Kontakt | Impressum | Hilfe-Video | Barrierefreiheit | Nutzungshinweise

Maßstab 1:250000 5 km



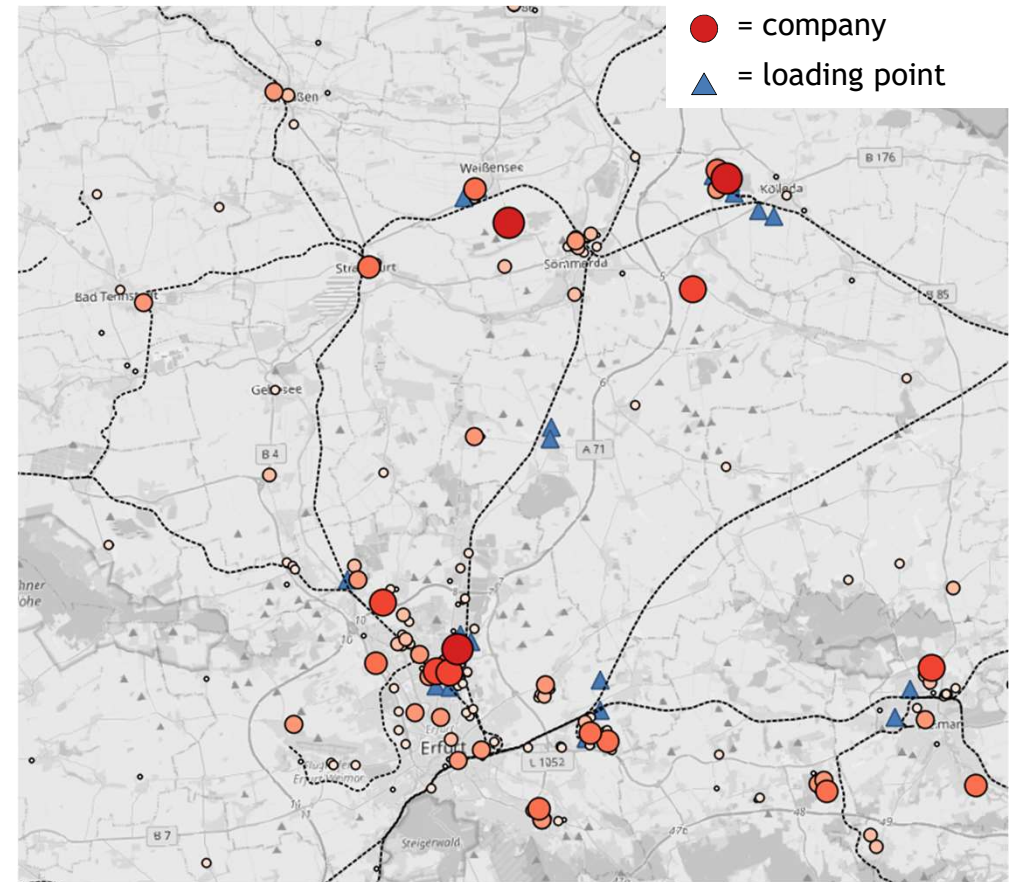
# CHALLENGE: COLLECTING DATA

\*IHK = CCI (Chamber of Commerce and Industry)

- Challenge to collect data for loading points
  - utilize existing data
  - opportunity for loading dock owners to submit data
  - editor of the data for TMIL
- Contain the following economic activity
  - sector (sector code of IHK), main and sub clusters
  - Clusters with quantity of employees
  - Legal form
  - Companies are identifiable for IHK to request further data (e.g. cargo volumes)

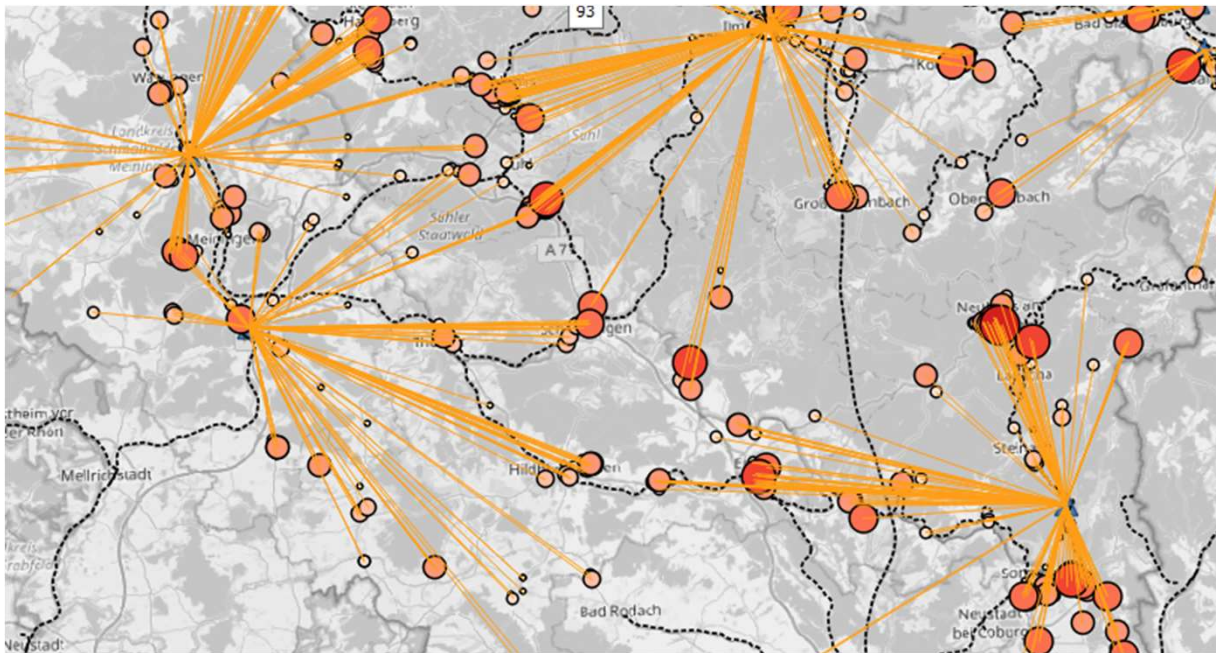
# POTENTIAL FOR RAIL FREIGHT & INDUSTRIAL SITES NEARBY

Locate potentials of rail suitable goods close by existing loading points or railway lines



Source: University of applied science Erfurt

## POTENTIAL FOR RAIL FREIGHT & INDUSTRIAL SITES NEARBY



Source: University of applied science Erfurt

- Identification of lack of loading points
- Missing: Compatibility of goods and technical equipment of loading points

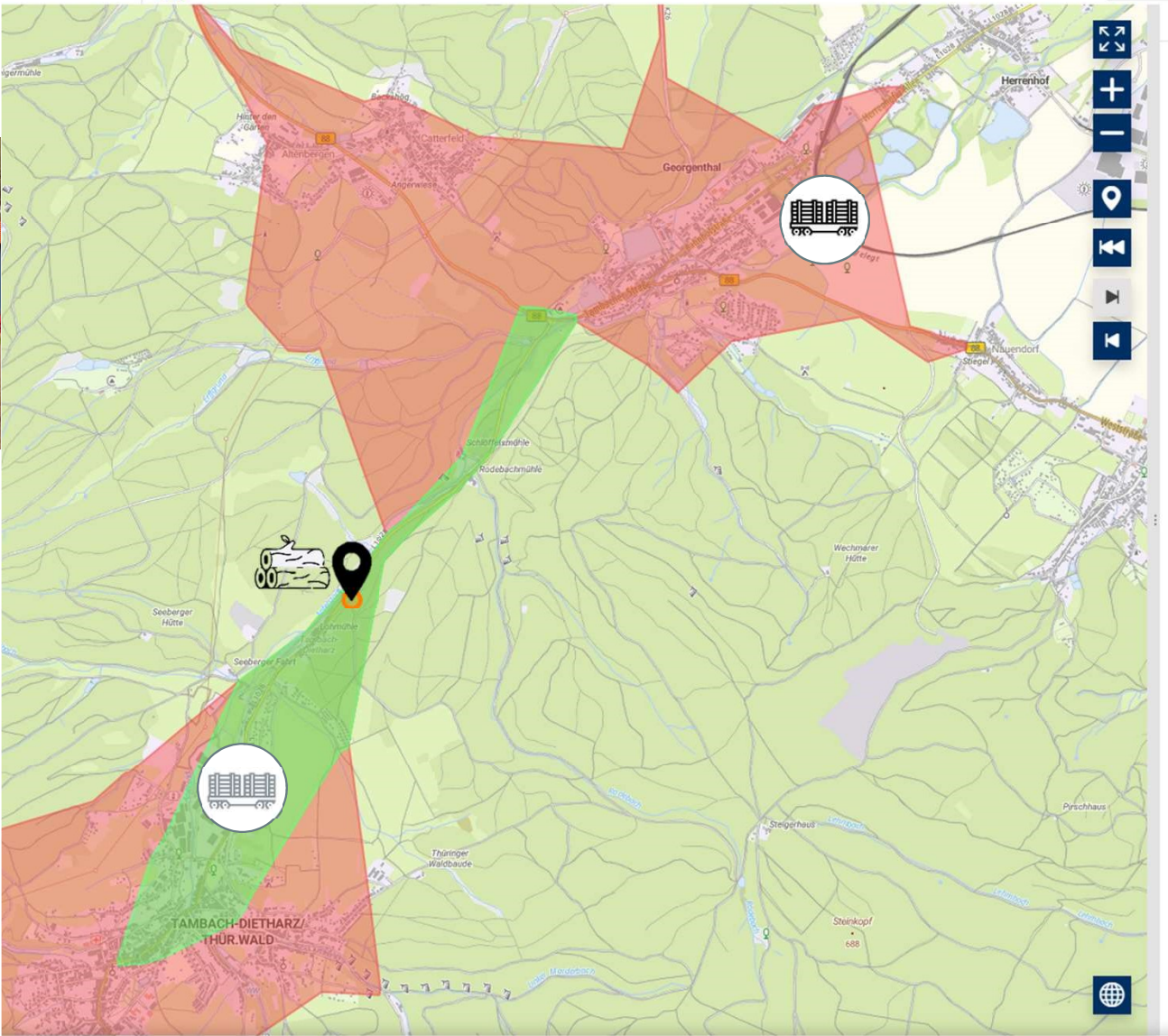


# Sawmill Ernst Schneider GmbH



Click for site plan

- Sector ▾
  - Wood trade
- Legal Form ▾
  - Ltd.
- Cluster ▾
  - Wholesale
- Quantity of employees ▾
  - 36
- Cargo volumes ▾
  - 2 wagons per week



### Routing

Routenplanung

Erreichbarkeit

Startpunkt

Suchen Sie einen Ort oder fügen Sie einen Punkt durch Klick in die Karte hinzu

614854.437843452, 5630210.56854831

×

Optimierung nach

Erreichbarkeit nach Zeit

▼

Maximale Reisedauer

1 min

8 min

180 min

Intervall

3 min

4 min

8 min

> Verkehrswege vermeiden

Berechnen

Legende

8 min

4 min

Category: Wood trade

Active loading point

disused loading point



Rail4Regions

Thuringian Ministry for Infrastructure and Agriculture



<https://www.interreg-central.eu/projects/rail4regions/>



[theo.sauerborn@tmil.thueringen.de](mailto:theo.sauerborn@tmil.thueringen.de)



+49 361 574191538