



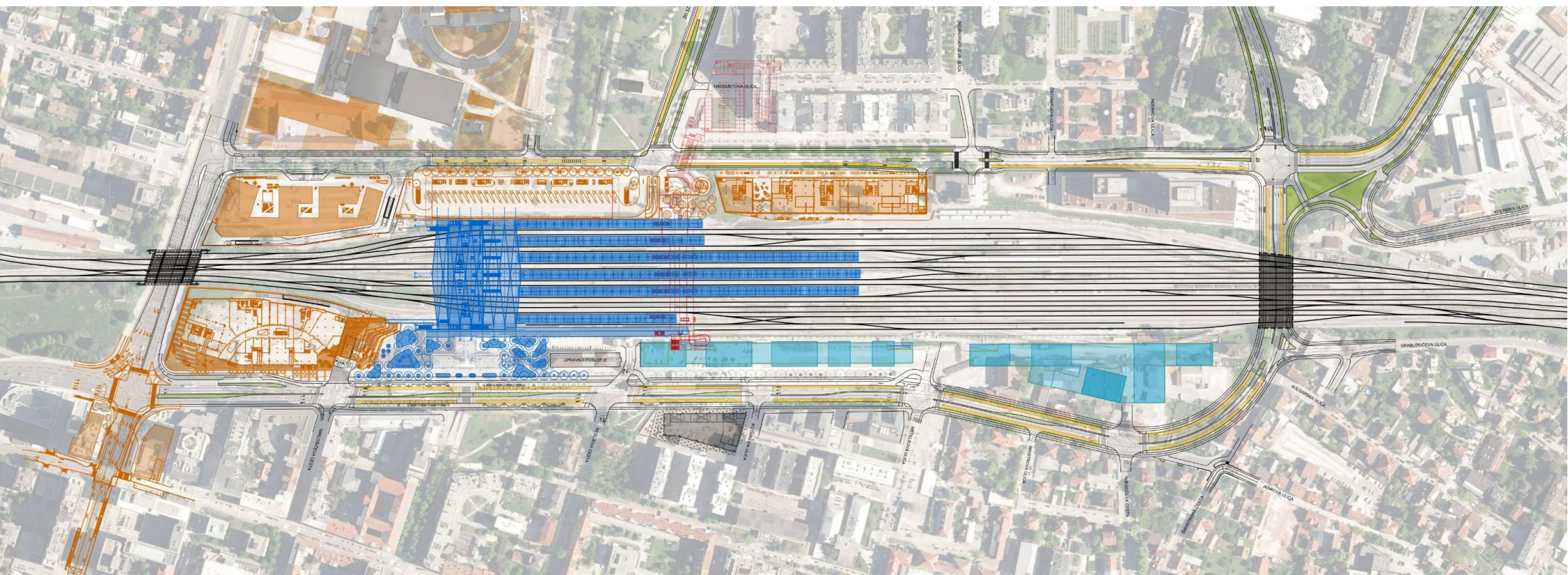
REPUBLIC OF SLOVENIA
MINISTRY OF INFRASTRUCTURE
SLOVENIAN INFRASTRUCTURE AGENCY

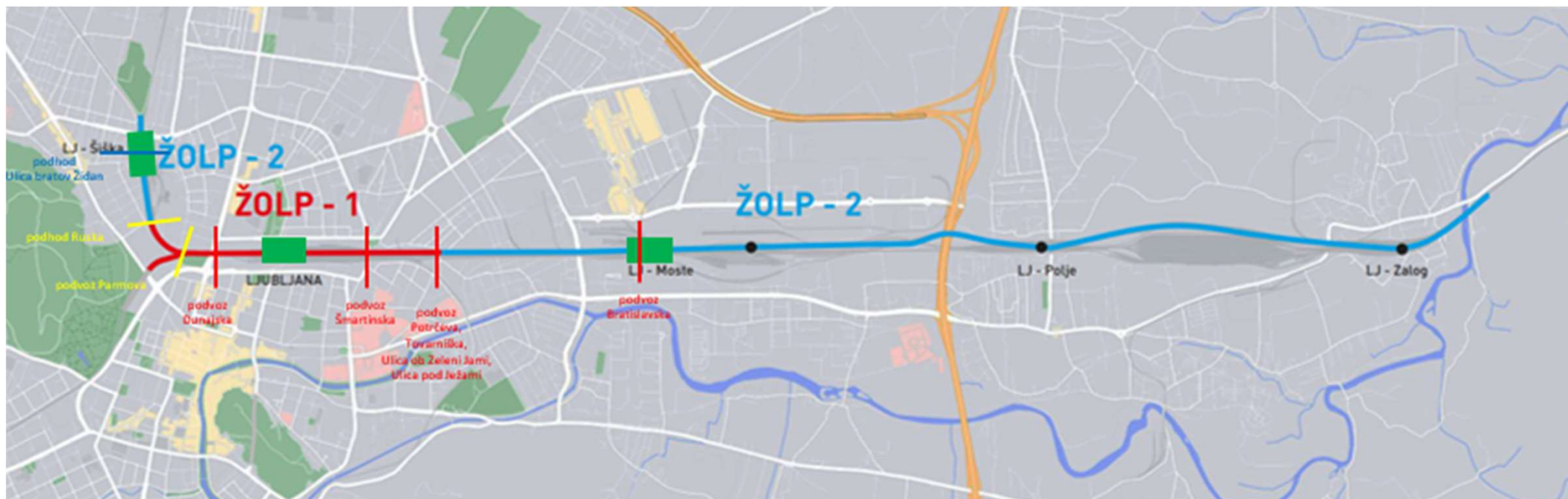
Goran Korošec

Ljubljana railway station reconstruction

LJUBLJANA • December 2024







ŽOLP-1

- Underpass next to Ljubljana station and a new overpass with a station hall
- Underpass Dunajska cesta
- Underpass Šmartinska cesta
- Underpass Potrčeva ulica

ŽOLP-2

- Underpass Bratislavka with the construction of a new railway station
- Underpass ulica Bratov Židan



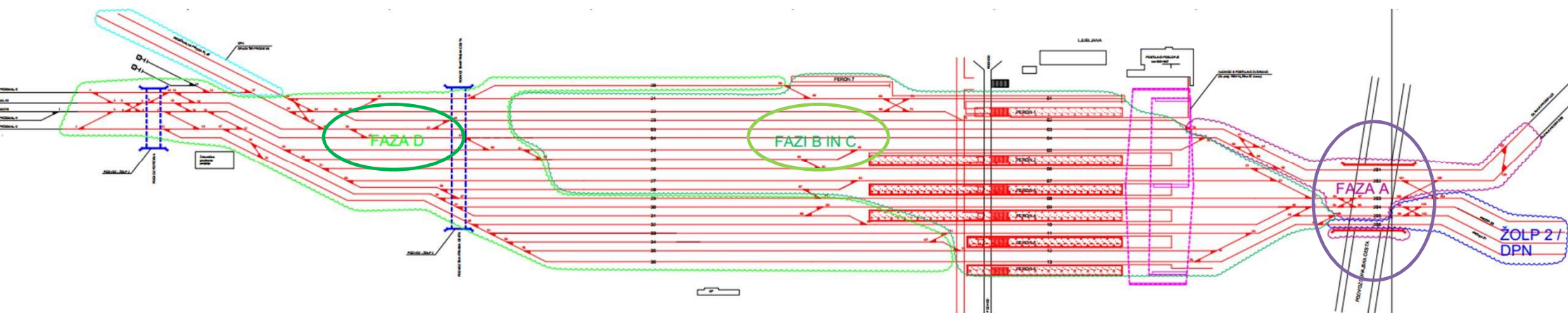
- Reduction of train travel times
- Eliminating poor traffic flow and inefficient traffic management
- Reducing operating and transportation costs
- Better interregional connectivity
- Improved traffic safety
- Less environmental impact
- Ensuring interoperability and TEN-T standards





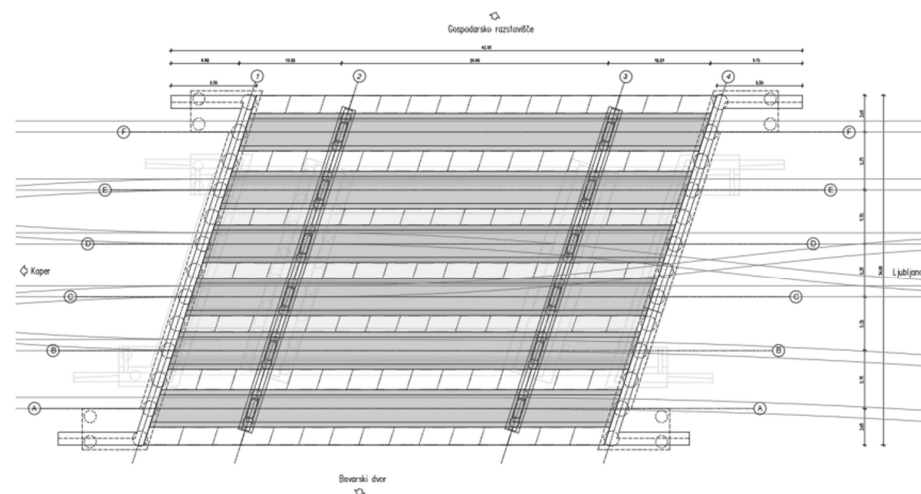
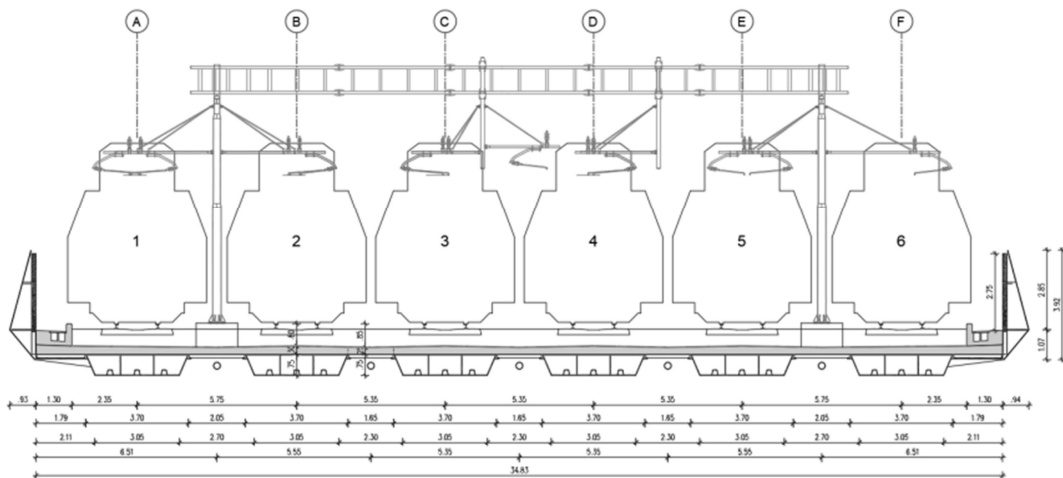
- Enabling of conditions for a 15-minute intervals inbound/outbound passenger transport during peak hours
- Increasing transport and throughput capacity for rail freight transport
- Meeting the technical specifications for the interoperability of the trans-European network
- promoting the use of public transport
- increasing of the security level in the station area

Phases of the Ljubljana railway station upgrade

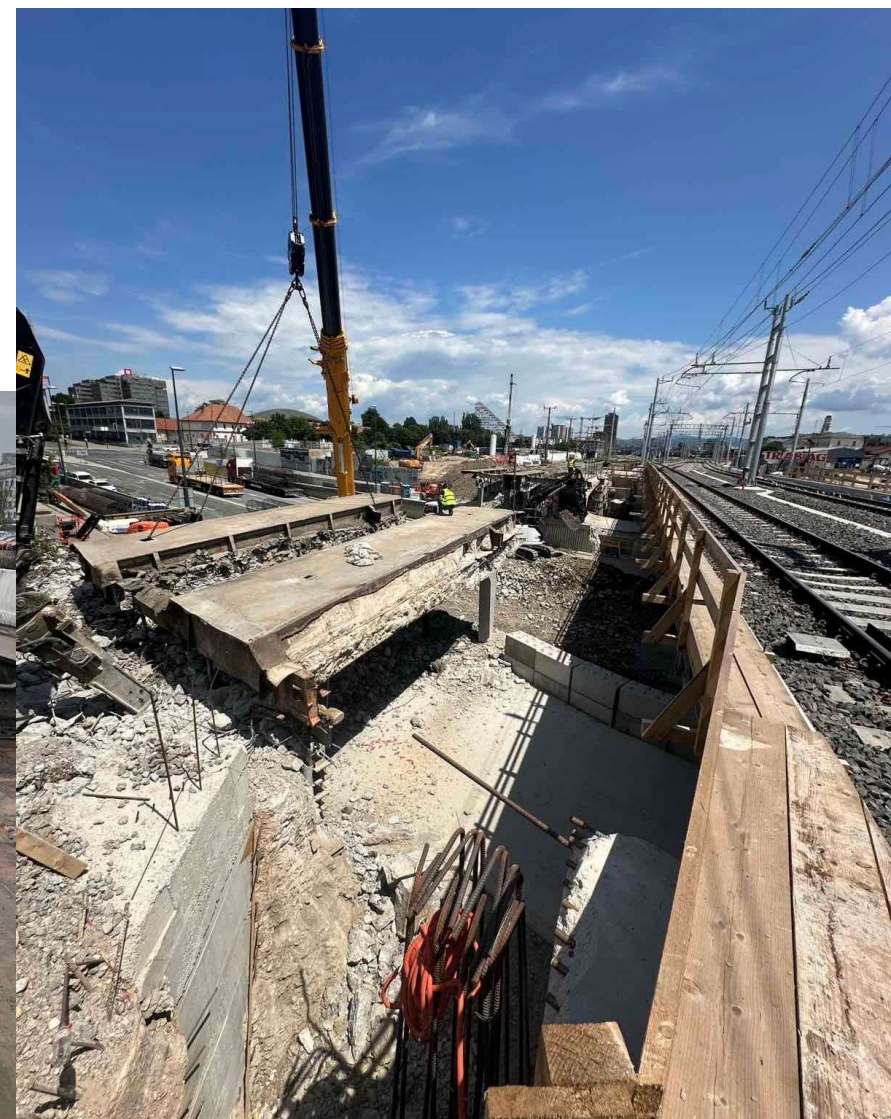
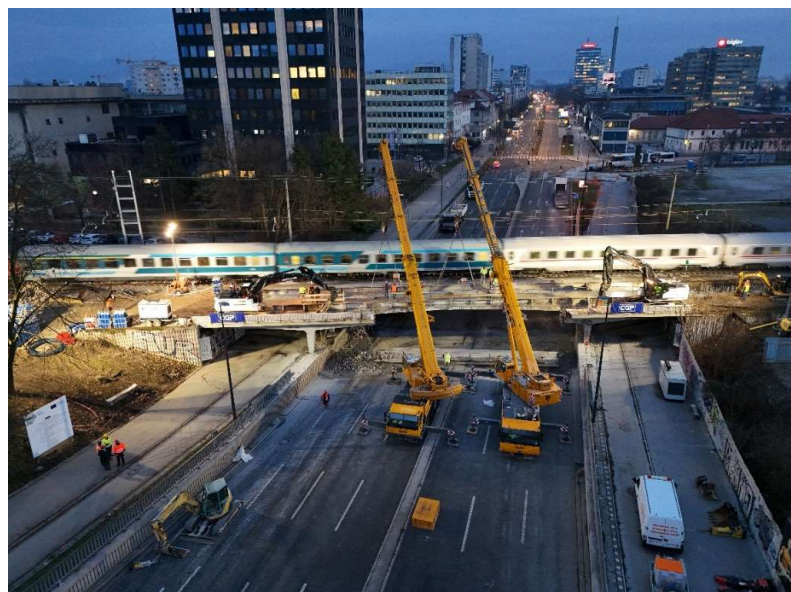


- PHASE A (new underpass Dunajska) is a precondition for the implementation of the other phases
- PHASE B and C (central Ljubljana station) can partially begin at the end of phase A, included are the new overpass with station hall and the expansion of the underpass
- PHASE D can follow after relocating of activities such as washing and cleaning of wagons and locomotives, fuel pumps from Ljubljana station and ensuring sufficient track capacity outside Ljubljana station to withdraw the locomotive replacement maneuver of freight trains to change direction.

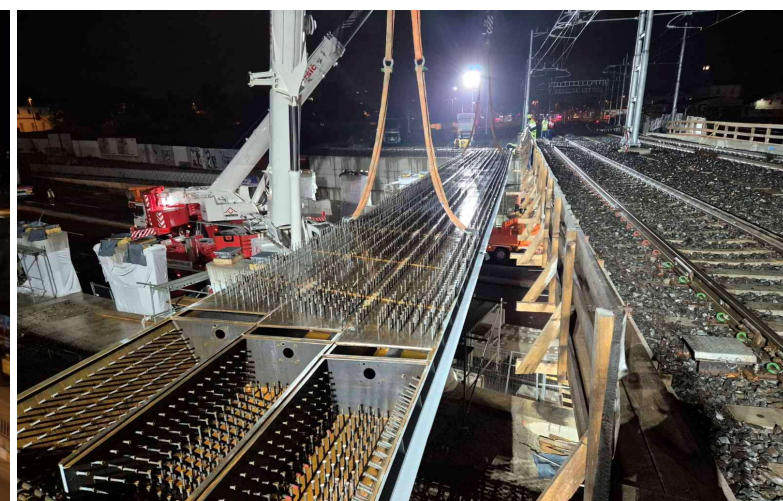
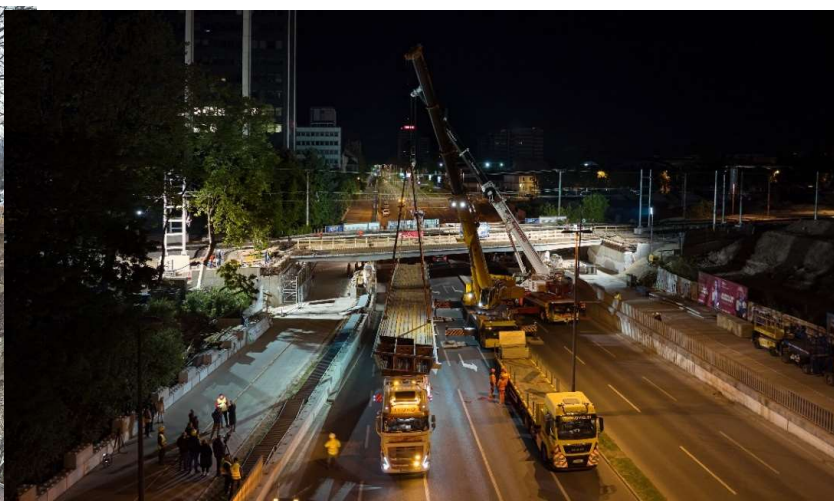
PHASE A - new railway overpass Dunajska cesta - solution



PHASE A - new railway overpass Dunajska cesta - demolition



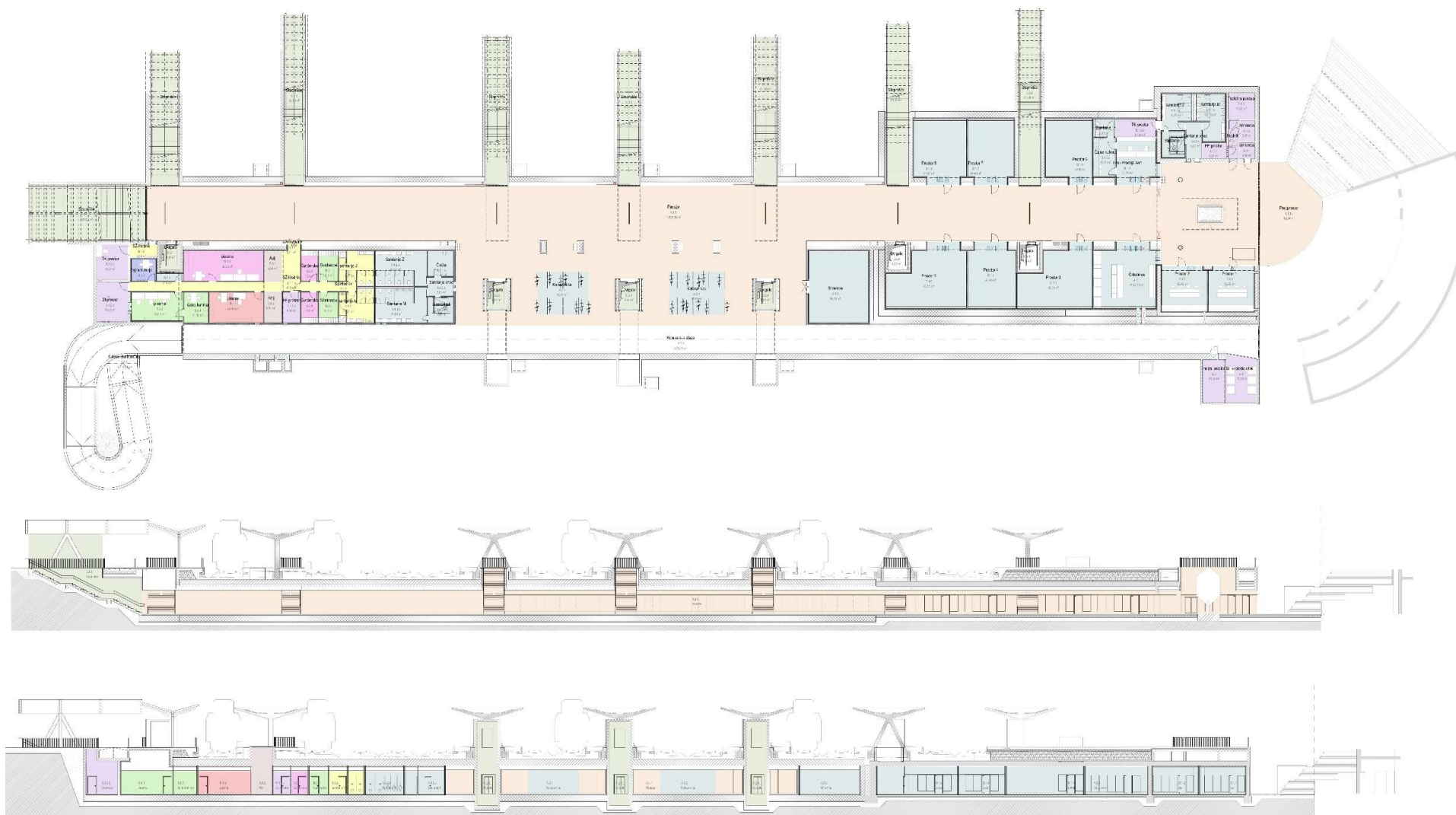
PHASE A - new railway overpass Dunajska cesta - construction





Phase B and C – new overpass with the station hall









Železniška postaja Ljubljana

Investitor: DRSI

Projektant: Tiring, Elea iC, Sadar+Vuga

1. phase: Ljubljana railway station

EU funds – CEF: 1,9 mio € - projects

Phase A - Dunajska overpass

Works contract 40,6 mio € - RRF funds 33 mio €

Execution: 2023–2025

Phase B+C – Central station Ljubljana

Works contract 244 mio € - RRF funds 205 mio €

Execution: 2024–2026

Phase D – project documentation in making



2. phase: upgrading of the Ljubljana Šiška, Ljubljana, Ljubljana Moste, Polje and Zalog railway stations and sections between them

EU funds - CEF: 6,59 mio EUR for the projects





**THANK YOU FOR
YOUR ATTENTION**

Goran Korošec, Slovenian infrastructure agency
Ljubljana, december 2024